

Clearwater River Frontage



TRACT 3A

- ◆ **LEGAL:** Tracts 1A, 2A, 3A in COS #5812 in Section 5, T14N, R14W
- ◆ **ACREAGE:** Each parcel is 13.3 acres
- ◆ **WATER:** Wells are drilled
- ◆ **SEWER:** Septic system to be installed by buyer
- ◆ **POWER:** At property
- ◆ **PHONE:** At property
- ◆ **TAXES:** TBD
- ◆ **TERMS:** Cash



TRACT 1A

TRACT 1A

- Clearwater River frontage
- Building site overlooking river
- Borders Blackfoot Clearwater Wildlife Mgmt area
- Well is drilled
- \$395,000

TRACT 2A

- Clearwater River frontage
- Small pond
- Good access off of Highway 200
- Well is drilled
- \$349,000

TRACT 3A

- Clearwater River frontage
- Blanchard Creek frontage
- Good grass
- Borders Blackfoot Clearwater Wildlife Mgmt area
- Well is drilled
- \$395,000



TRACT 2A

FOR MORE INFORMATION

CALL (406) 677-3000 or

1 (800) 577-3013

P.O. Box 490

Hwy. 83 & Locust Lane

Seeley Lake, MT 59868

www.ClearwaterMontanaProperties.com

www.Realtor.com

Kevin@ClearwaterMontanaProperties.com

Twyla@ClearwaterMontanaProperties.com



Kevin Wetherell
Broker/Owner
CRB, GRI, RRS

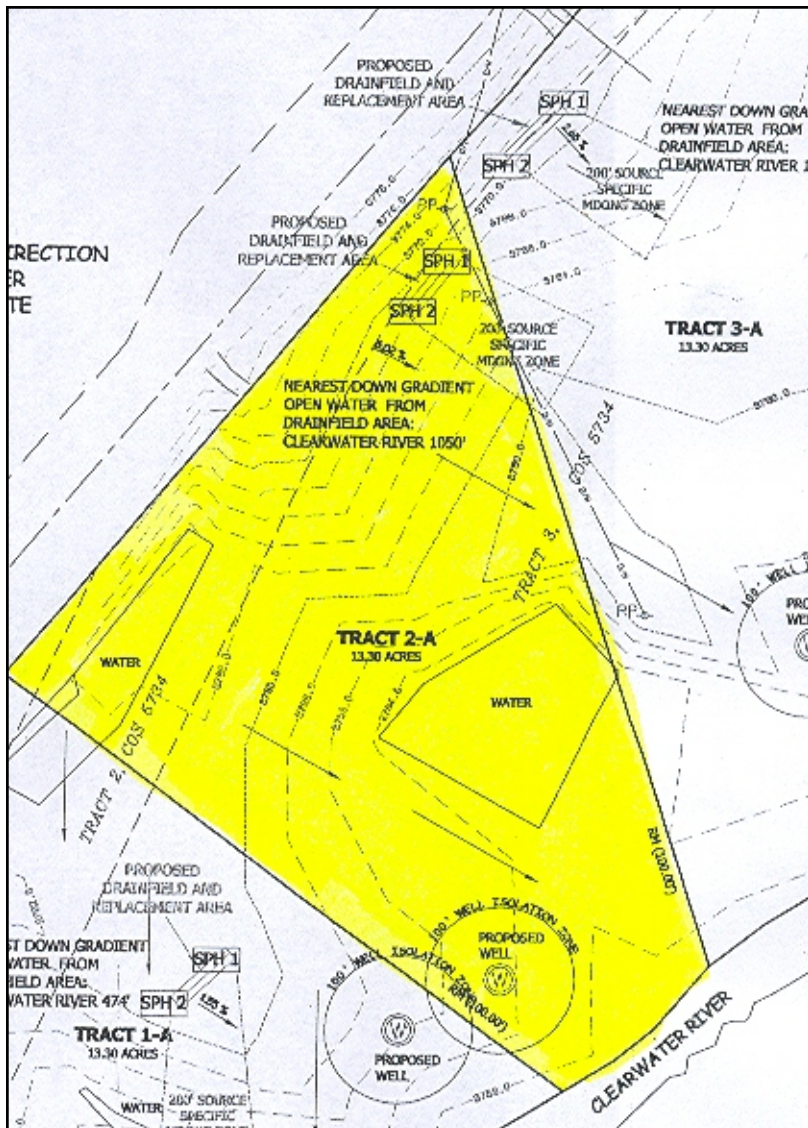
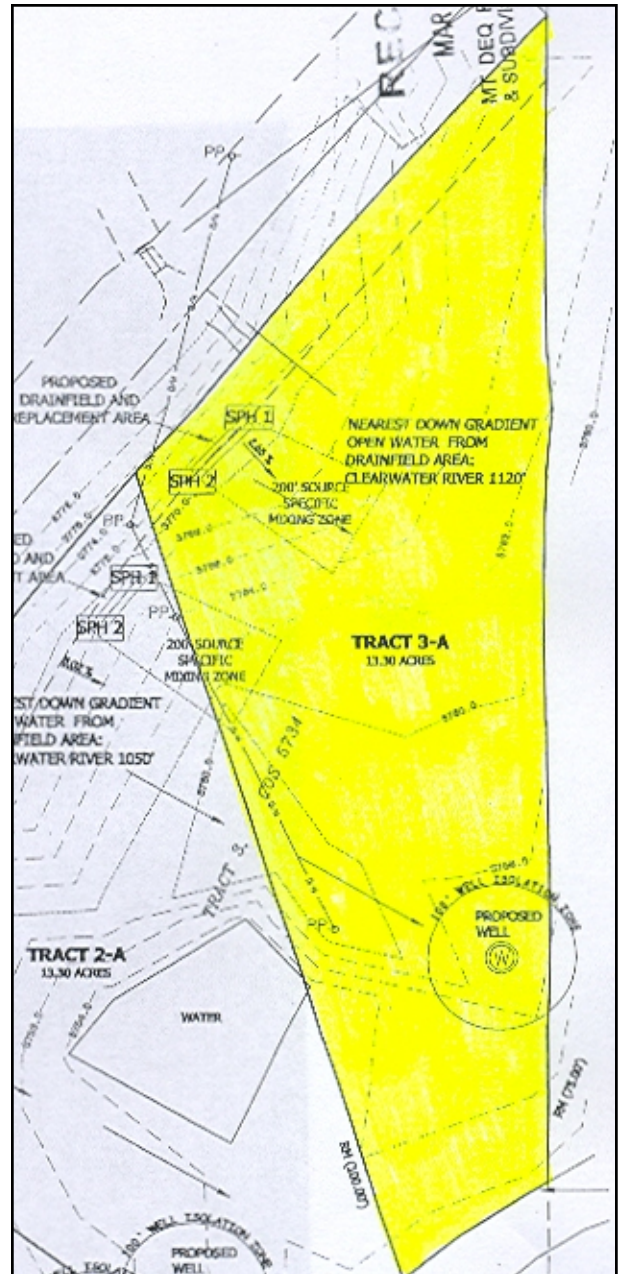
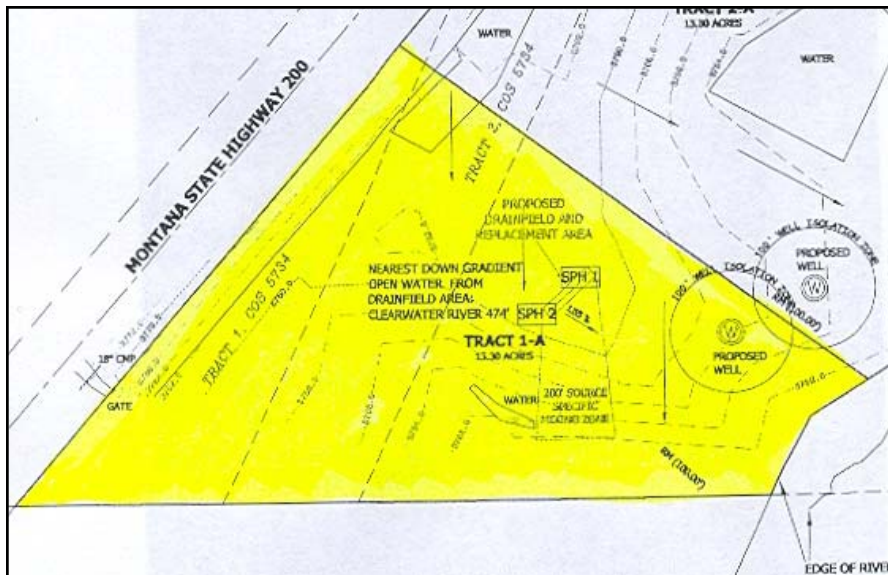


Twyla Johnson
Business
Manager
GRI, RRS

Participating with



The information contained herein has been obtained from sources we consider to be reliable but this information is not guaranteed nor is it to be considered a warranty of any nature. Please ask further questions to verify this information for yourself.



Participating with

Cabela's TROPHY
PROPERTIES™
www.CabelasTrophyProperties.com