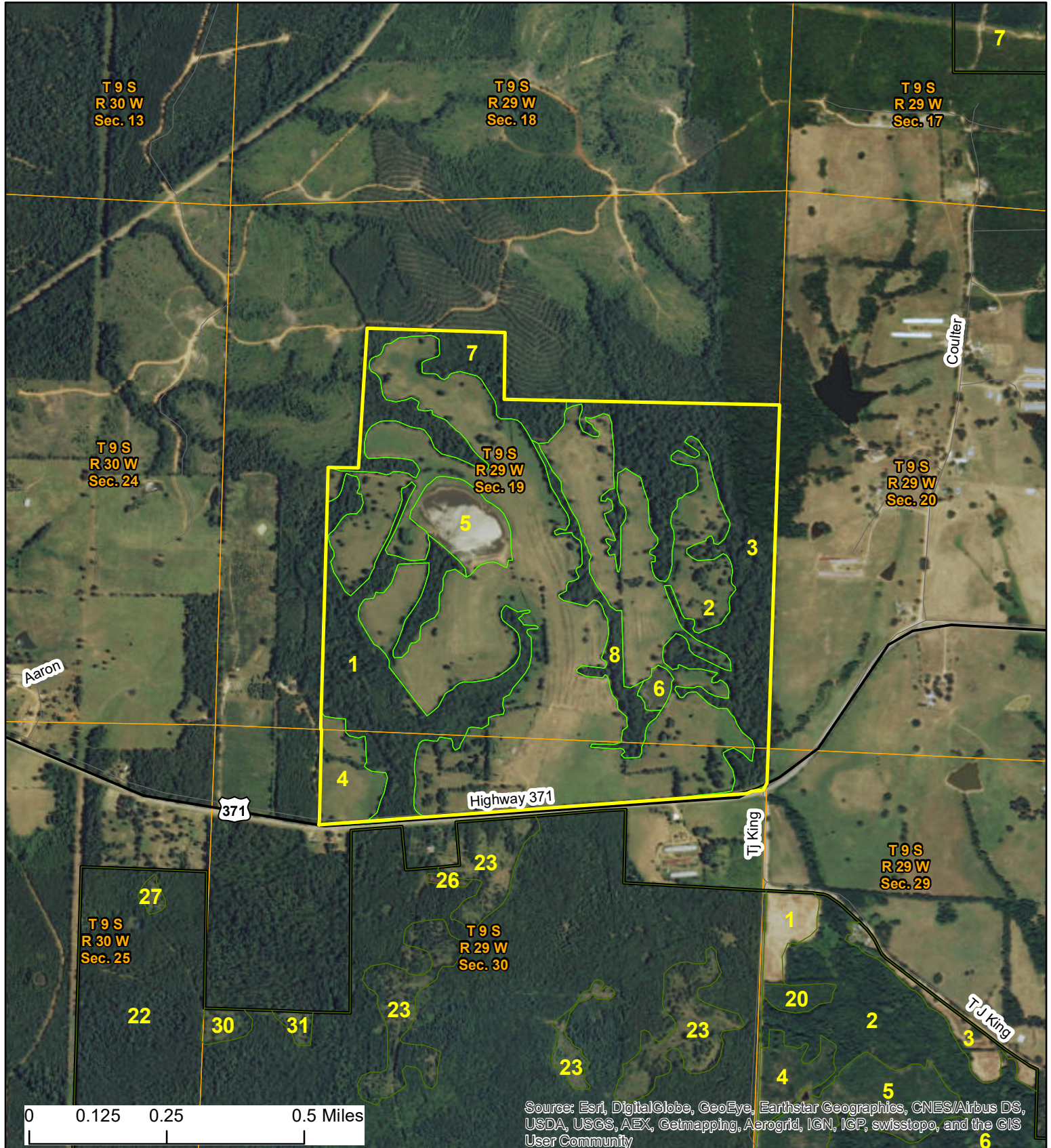


JHHC 56- Highway 371 Ranch

405 Acres, more or less, Sevier County, AR



Phone: 1-888-695-8733
www.forestryrealestate.com



DAVIS DUBOSE KNIGHT
FORESTRY & REAL ESTATE PLLC

This map and all information it contains is provided "AS IS," as a courtesy to potential buyers. Potential buyers should make their own determination regarding the accuracy of the information provided. Neither the seller, Davis DuBose Knight Forestry & Real Estate PLLC (DDKFRE), their subsidiaries, affiliates nor representatives warrant the accuracy, adequacy or completeness of any information contained herein regarding the property, its condition, boundaries, access, acreage, or timber stand information. DDKFRE expressly disclaims liability for errors or omissions.