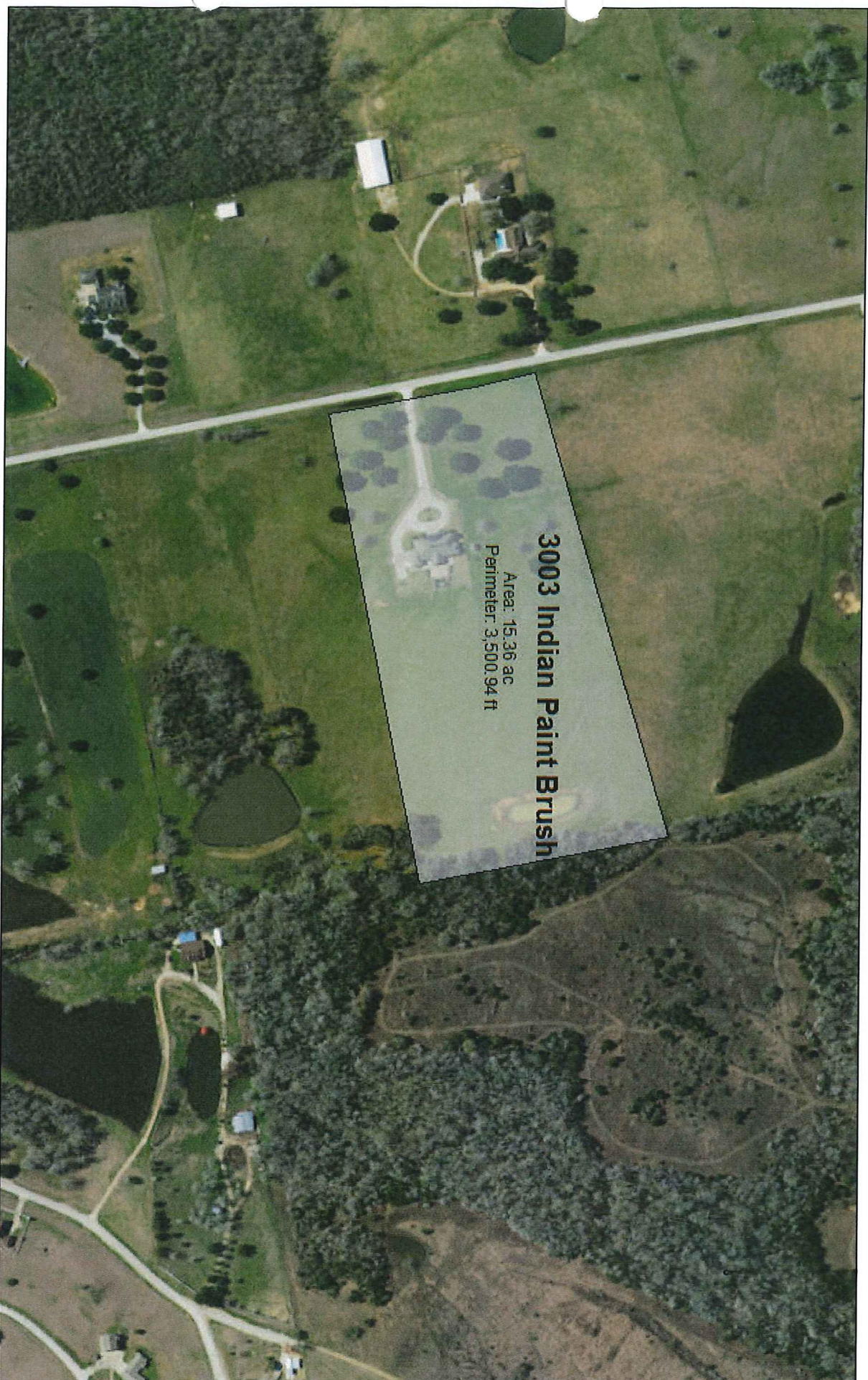


3003 Indian Paint Brush



3003 Indian Paint Brush
Area: 15.36 ac
Perimeter: 3,500.94 ft

March 24, 2017

Disclaimer: This product is for informational purposes only and has not been prepared for or be suitable for legal, engineering, or surveying purposes. It does not represent an on-the-ground survey and represents only the approximate relative location of boundaries.

1:4,702
0 0.04 0.08 0.16 mi
0 0.05 0.1 0.2 km

Source: Esri, DigitalGlobe, GeoEye, Earthstar Geographics, CNES/Airbus DS, USDA, USGS, AeroGRID, IGN, and the GIS User Community

Washington County Appraisal District & BIS Consulting - www.bisconsultants.com
This product and relative contents are the property of the respective governmental entity and BIS Consultants. Use is restricted for official purposes.