

LAND FOR SALE

LISTING #13845

PRICE: \$58,000

DESCRIPTION: If you commute to Des Moines and are looking for a lot in the country to build on, I have what you have been looking for. 2.5 acres located just 2 miles south of Hwy 92 on Lisbon Street with walk out possibilities. The property has yet to be surveyed and lot dimensions can be changed to suit your building plans. The rural water and electric are at the road and an additional 12.5 acres can be purchased if desired. The owner will put the driveway in when you decide where you want it. Come check out the possibilities.

DIRECTIONS: From Indianola: Take Hwy 92 west to 60th Avenue. Go south on 60th 2 miles to Lisbon Street. The property is located just east of the intersection on the south side of Lisbon St.

TAXES: \$55.00 Est.

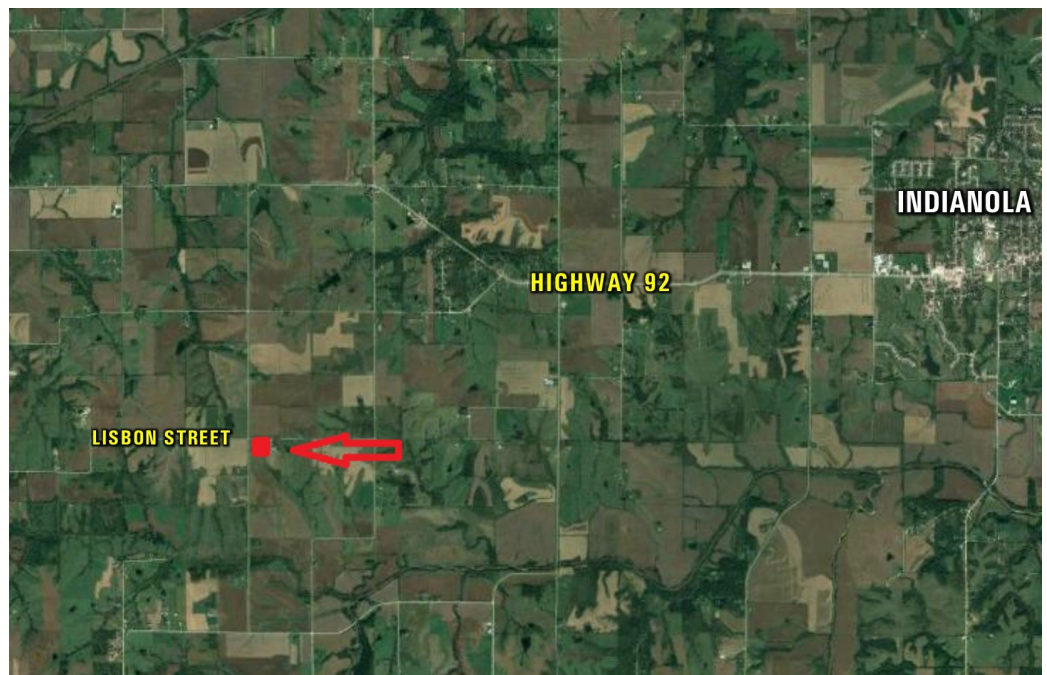
DARAN BECKER

C: 515.979.3498

O: 515.222.1347

Daran@PeoplesCompany.com

2.5 ACRES M/L
WARREN COUNTY, IOWA



PeoplesCompany.com
855.800.LAND

12119 Stratford Dr, Ste B
Clive, Iowa 50325