

LAND FOR SALE

LISTING #13837

PRICE: \$59,500 (\$5,950/Acre)

DESCRIPTION: Beautiful 10 acres m/l building site situated south of Indianola on Highway 69. This property offers an ideal place to build with beautiful views and a nice pond. Utilities are available. Indianola Schools. Property boundaries and acres are subject to final survey and county approval. New driveway entrance has been approved by Iowa DOT. Contact listing agent for estimated cost of installation.

DIRECTIONS: From Indianola: take highway 69 south approximately 11 miles to Taft Street. The property is on the east side of Highway 69 just south of Taft St.

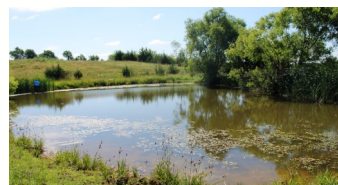
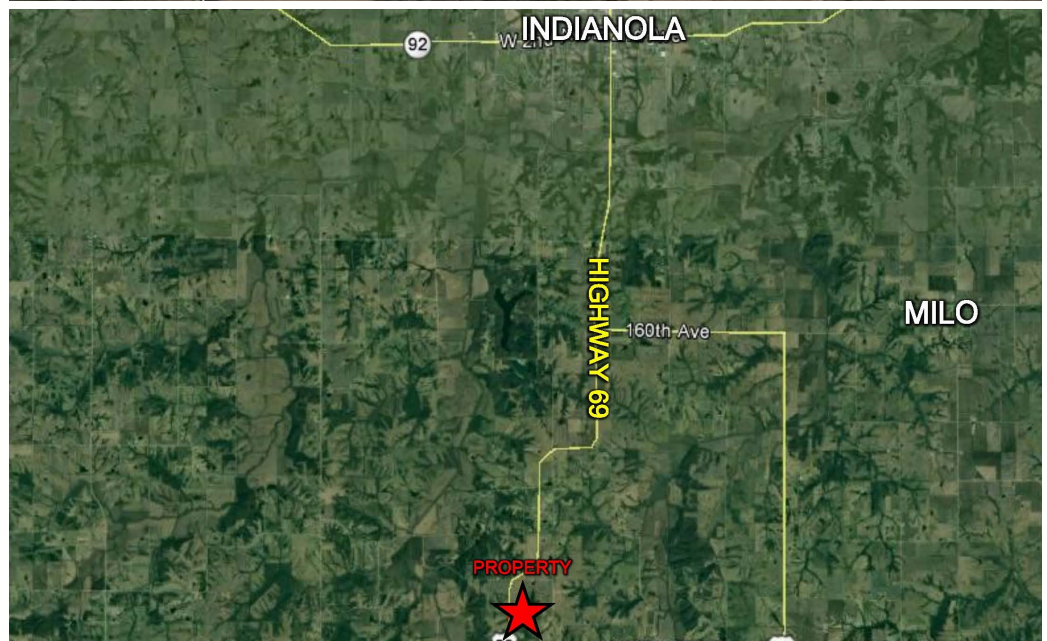
TAXES: \$866 Annually

KENNY HERRING

C: 515.783.8718

O: 515.222.1347

10 ACRES M/L
WARREN COUNTY, IOWA



PeoplesCompany.com
855.800.LAND

12119 Stratford Dr, Ste B
Clive, Iowa 50325