



Foley Farm

Taylor County, FL



The rural residential life never looked so good. Picture your home nestled on this 14-acre tract with half acre pond, some pastureland and an expansive line of moss-draped oaks and small stand of pines. You've got a quaint downtown only four miles up the road and a veritable eco-paradise of options around you. Welcome to the North Florida lifestyle...

Property Description



OVERVIEW

- 14+/- acres
- 1,000' paved frontage on Old Foley Road
- Approximately 11 acres of pasture
- Stand of hardwoods and pines
- Half-acre pond
- Just four miles to downtown Perry

PRICE

Primed for rural residential:
\$84,000 (\$6,000/acre)

FIND IT

From the intersection of Highway 98 and US Highway 19/27 in downtown Perry, Florida, drive south on US 27 approximately 3.6 miles to Old Foley Road. Turn east and drive .6 miles to the gate.

[MAP IT »](#)



250 John Knox Rd., Ste.7
Tallahassee, FL 32303

(850) 385-3000
SouthernLandRealty.com

Ideal for...



Rural and recreational.

Is your dream to have an organic garden, a few goats, maybe some chickens in the backyard? Or, how about a horse barn? The open spaces around Foley Farm will inspire the imagination. Best of all, Taylor County has abundant fresh and saltwater fishing, beaches and waterways for the whole family to explore.

Country living close to town. Foley Farm is nestled quietly in the rural terrain, and yet you're only four miles to all the conveniences in downtown Perry. Plus, you're near a major artery going south and 30 minutes to the east-west Interstate 10. Only 50 minutes to the capital city of Florida, Tallahassee.

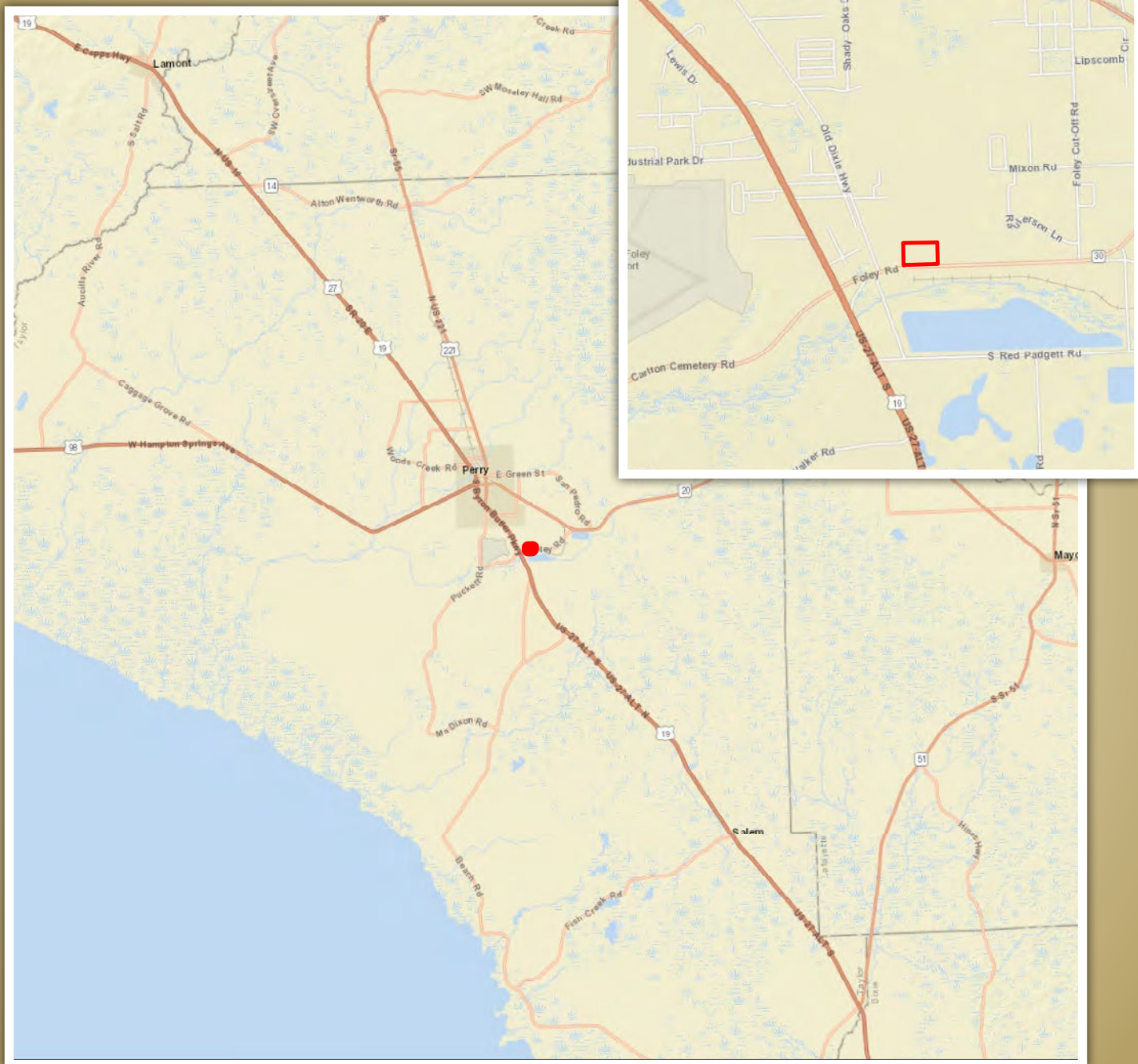


For more details on Foley Farm, contact Rob Langford at Southern Land Realty:
www.SouthernLandRealty.com

250 John Knox Rd., Ste. 7
Tallahassee, FL 32303

(850) 385-3000
SouthernLandRealty.com

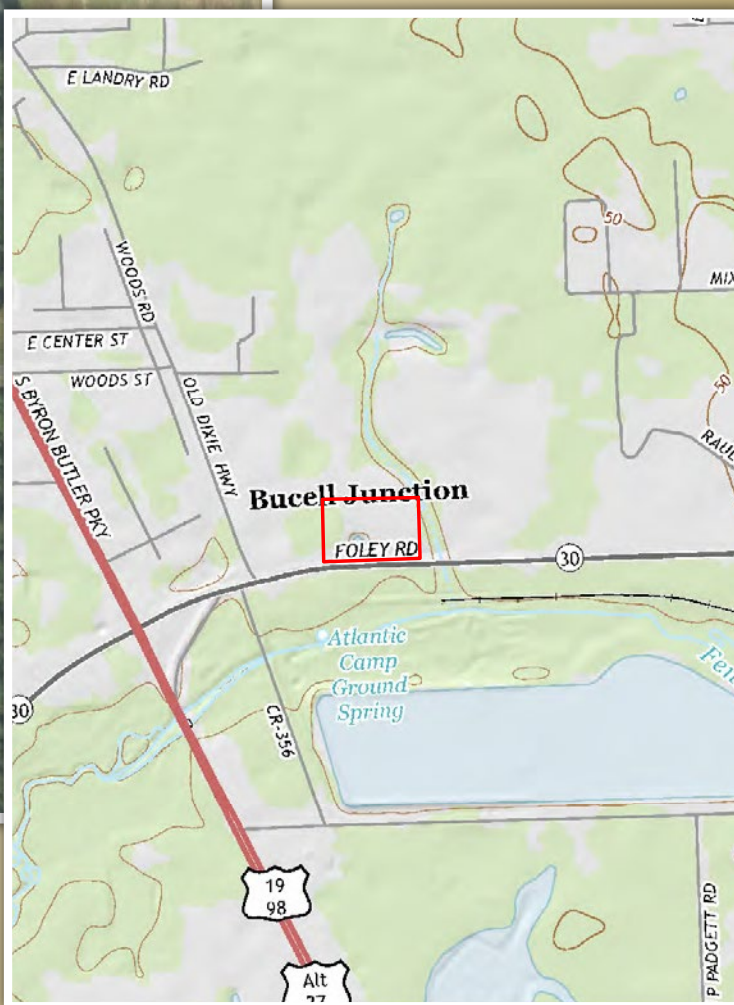
Location Map



250 John Knox Rd., Ste.7
Tallahassee, FL 32303



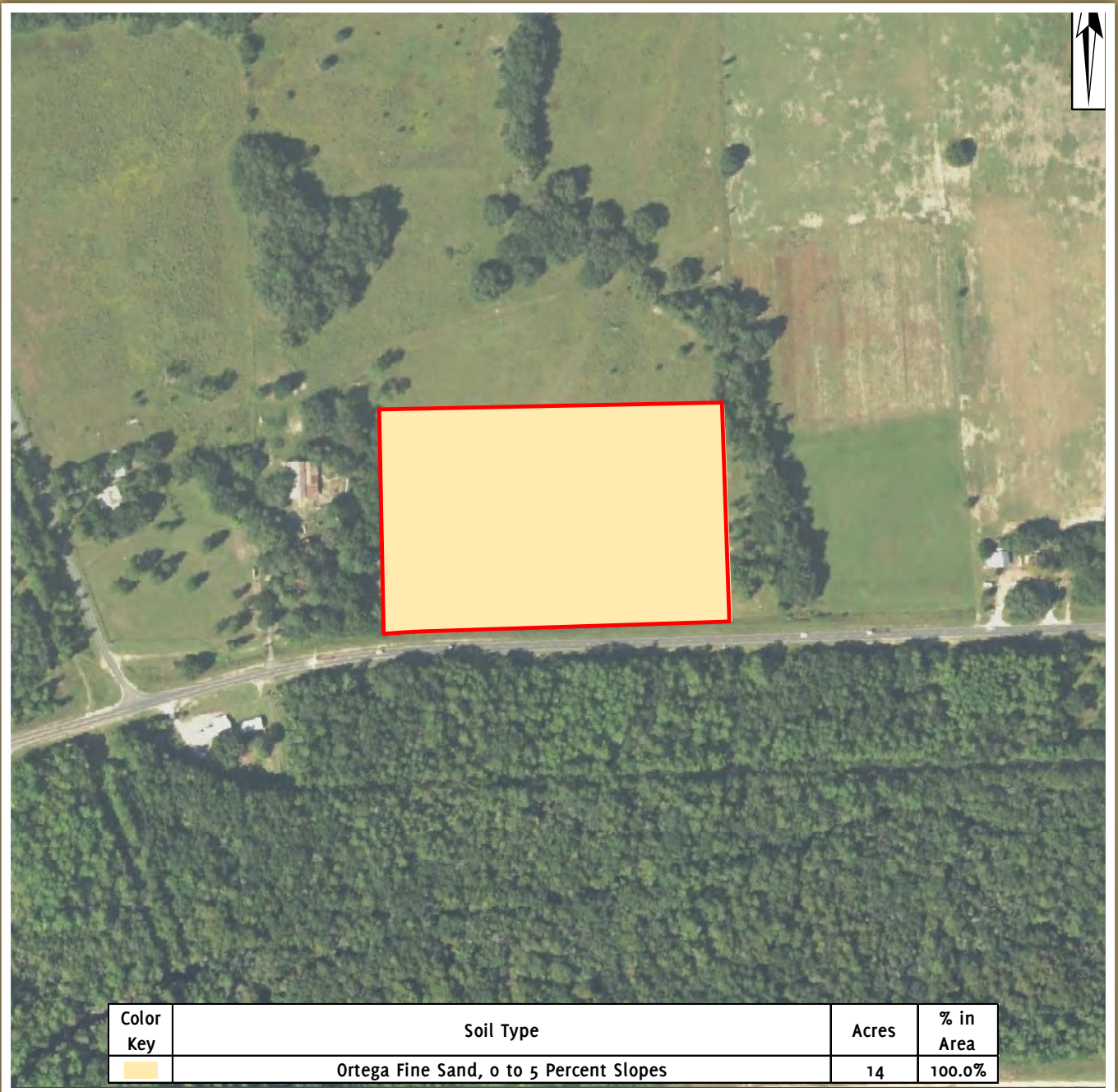
(850) 385-3000
SouthernLandRealty.com



250 John Knox Rd., Ste.7
Tallahassee, FL 32303

(850) 385-3000
SouthernLandRealty.com

Soil Types



250 John Knox Rd., Ste.7
Tallahassee, FL 32303

(850) 385-3000
SouthernLandRealty.com

North Florida native Rob Langford brings an unmatched perspective to the process of buying and selling southern land. He grew up hunting and exploring the Red Hills region of the U.S. and beyond and has been a licensed real estate agent since 1988. He is also a Broker in Florida, Georgia and Alabama.

Rob served as Broker/President of Southern Forestry Realty from 2005-2013, where he gained unique insight into the timber and forestry industry. In a previous profession, Rob helped introduce innovative surgical devices to sports medicine markets and later represented advanced life saving healthcare technology.

Rob holds a Bachelors in Business Communication from Florida State University. He and his wife, Monticello, Florida native Jennifer Yaun Langford, have three children.



Rob Langford, Broker
(850) 556-7575
Rob@SouthernLandRealty.com



Luke Murphy, Broker
(850) 597-4441
Luke@SouthernLandRealty.com

Luke's start in real estate came after he was critically injured in Iraq, while serving as a Staff Sergeant for the U.S. Army's elite 101st Airborne Division. A recipient of the coveted Purple Heart, Luke later joined other wounded soldiers to race marathons on a hand crank bike.

After graduating from Florida State University, Luke earned his real estate license and quickly exceeded sales expectations at his first employer. He became a partner in Southern Land Realty in 2013.

Luke's military training has instilled an incredible sense for details, and his diverse background lends itself to a rare creativity for buyers and sellers of southern land.

Luke is on the National Campaign Team for the Wounded Warrior Project and a frequent keynote speaker for Homes for Our Troops. In 2015, he published his memoir, "Blasted by Adversity: the Making of a Wounded Warrior." Luke and his wife Stephanie enjoy hunting, fishing and other outdoor sports. They live in Tallahassee.

