

Ross Properties, LLC

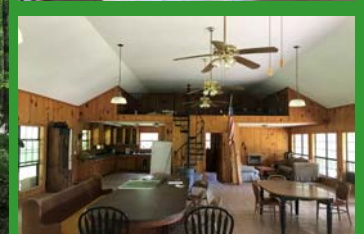
Block 4

1,026 (+/-) Acres For Sale
Located Between Brandon & Pelahatchie, MS



\$1,642,000
(\$1,600/ac)

- Includes a beautiful lodge
- Contains significant timber value including pine plantations ready for thinning as well as mature hardwood
- Great recreational & investment property
- Interior trails throughout property
- Food plots in place
- More pictures can be viewed at www.hairstonforestry.com/landsales



For more information, please contact:

Buddy Hairston

601-854-7001 office

601-672-6290 cell

hairstonforestry@bellsouth.net

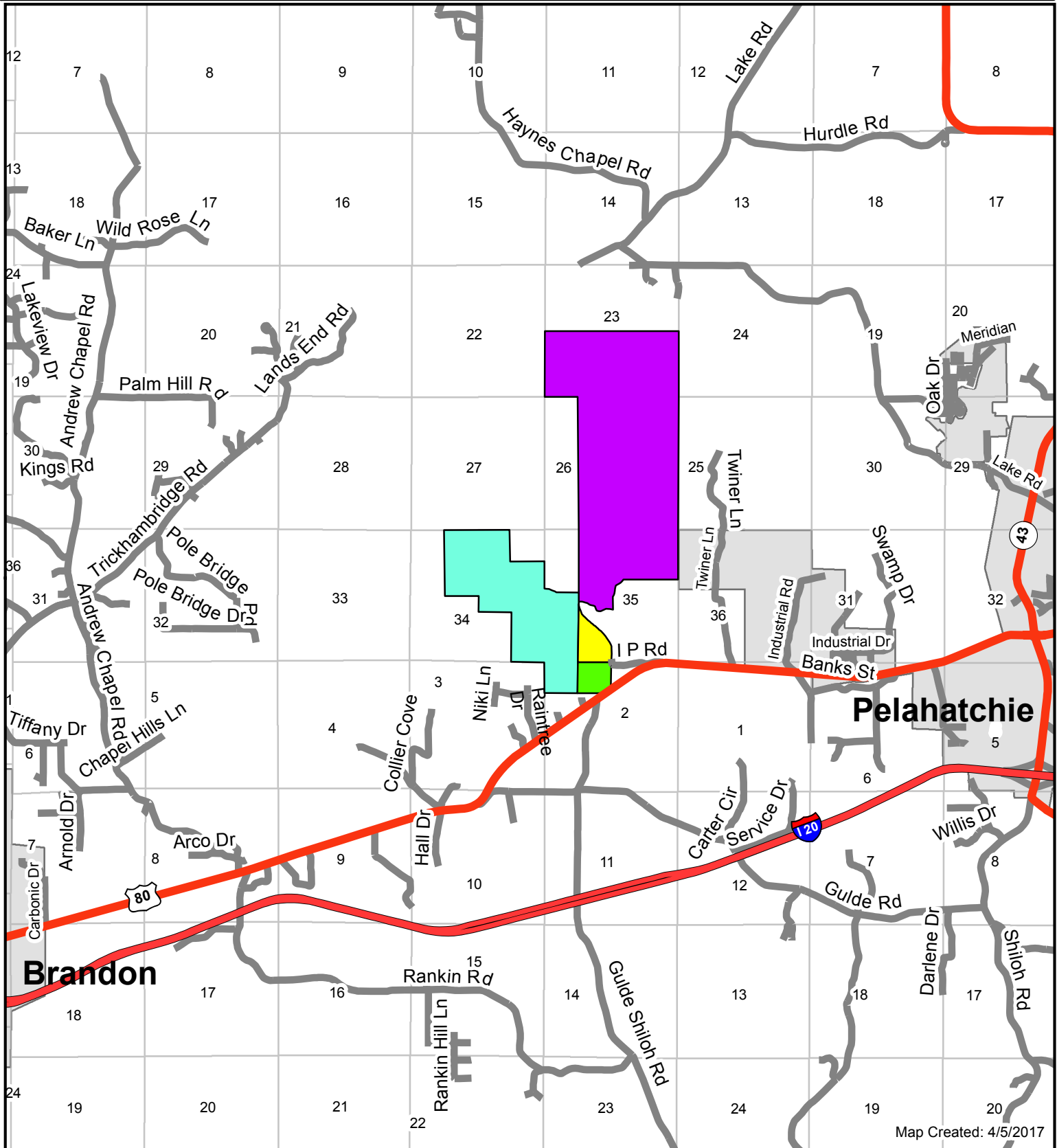
TERRY H. HAIRSTON, BROKER

128 Whippoorwill Rd. Brandon, MS 39042 601-992-2270





Ross Properties LLC

T6N, R5E, Rankin County, MS

Location Map



www.HairstonForestry.com

-  Block One
-  Block Two
-  Block Three
-  Block Four

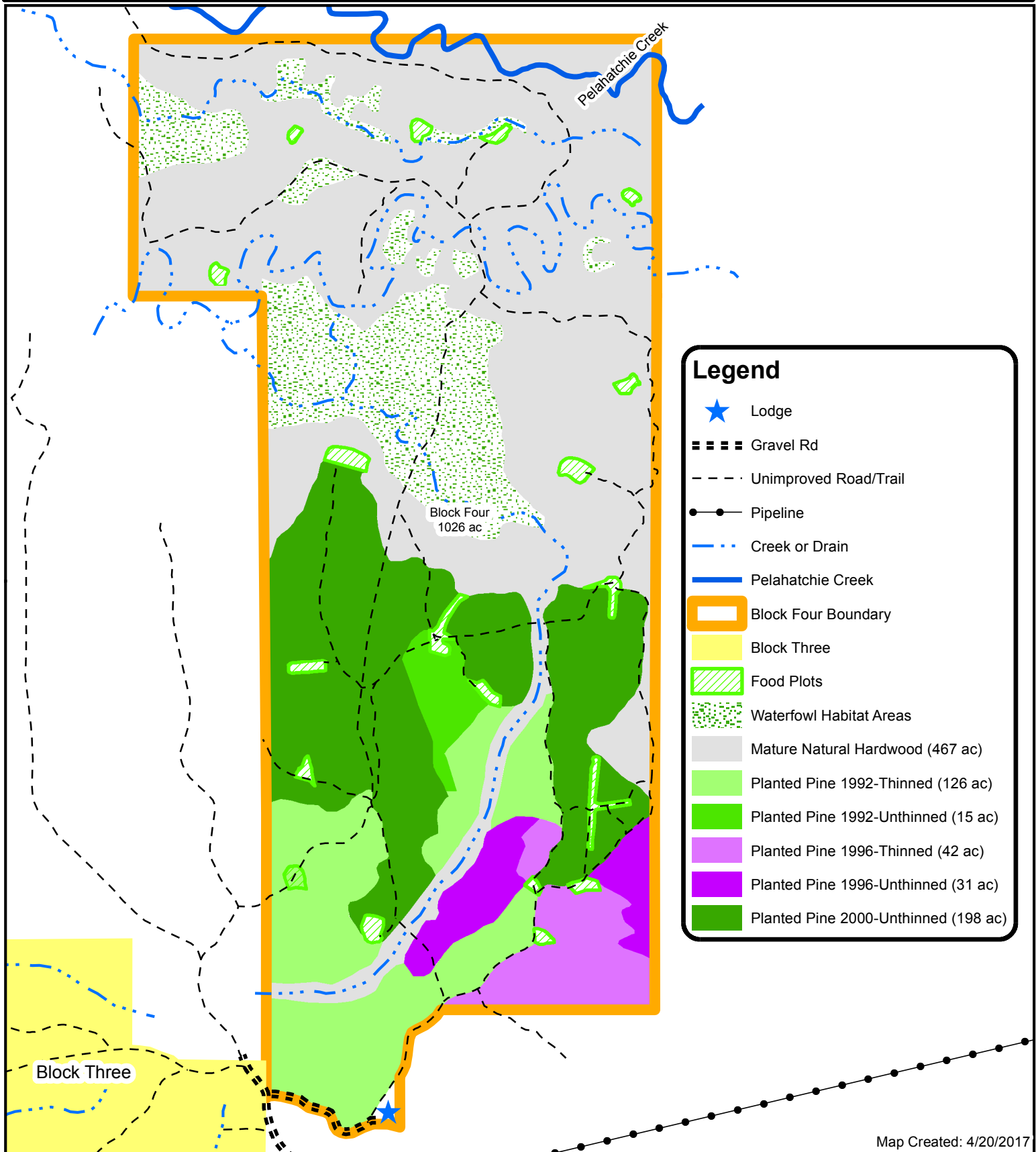


1 inch = 5,280 feet

Ross Properties LLC - Block 4

T6N, R5E, Rankin County, MS

Timber Stand Map



HAIRSTON



FORESTRY
CONSULTANTS

www.HairstonForestry.com

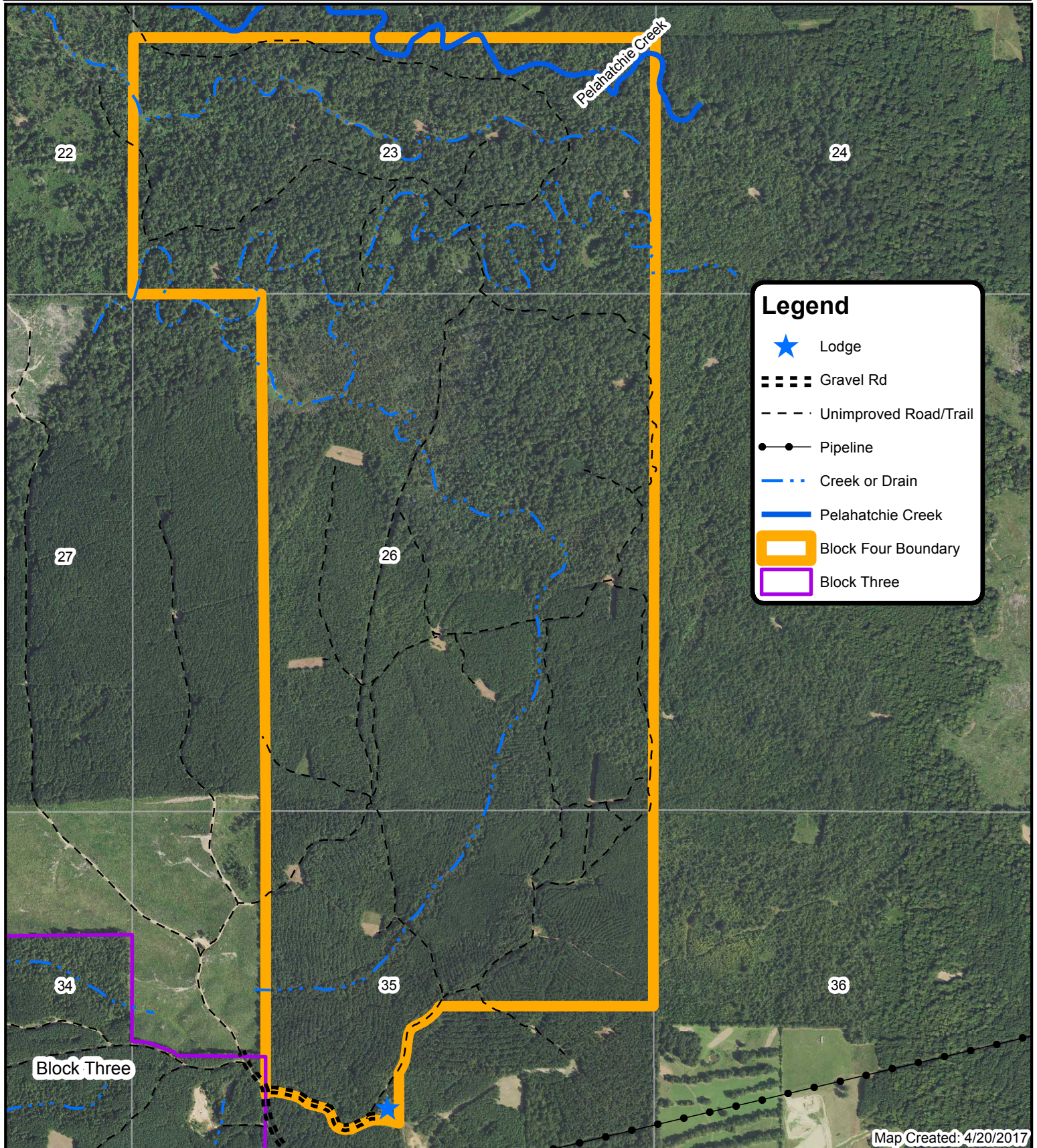


1 inch = 1,320 feet

Ross Properties LLC - Block 4

T6N, R4E, Rankin County, MS

2016 Aerial Map



FORESTRY
CONSULTANTS

www.HairstonForestry.com

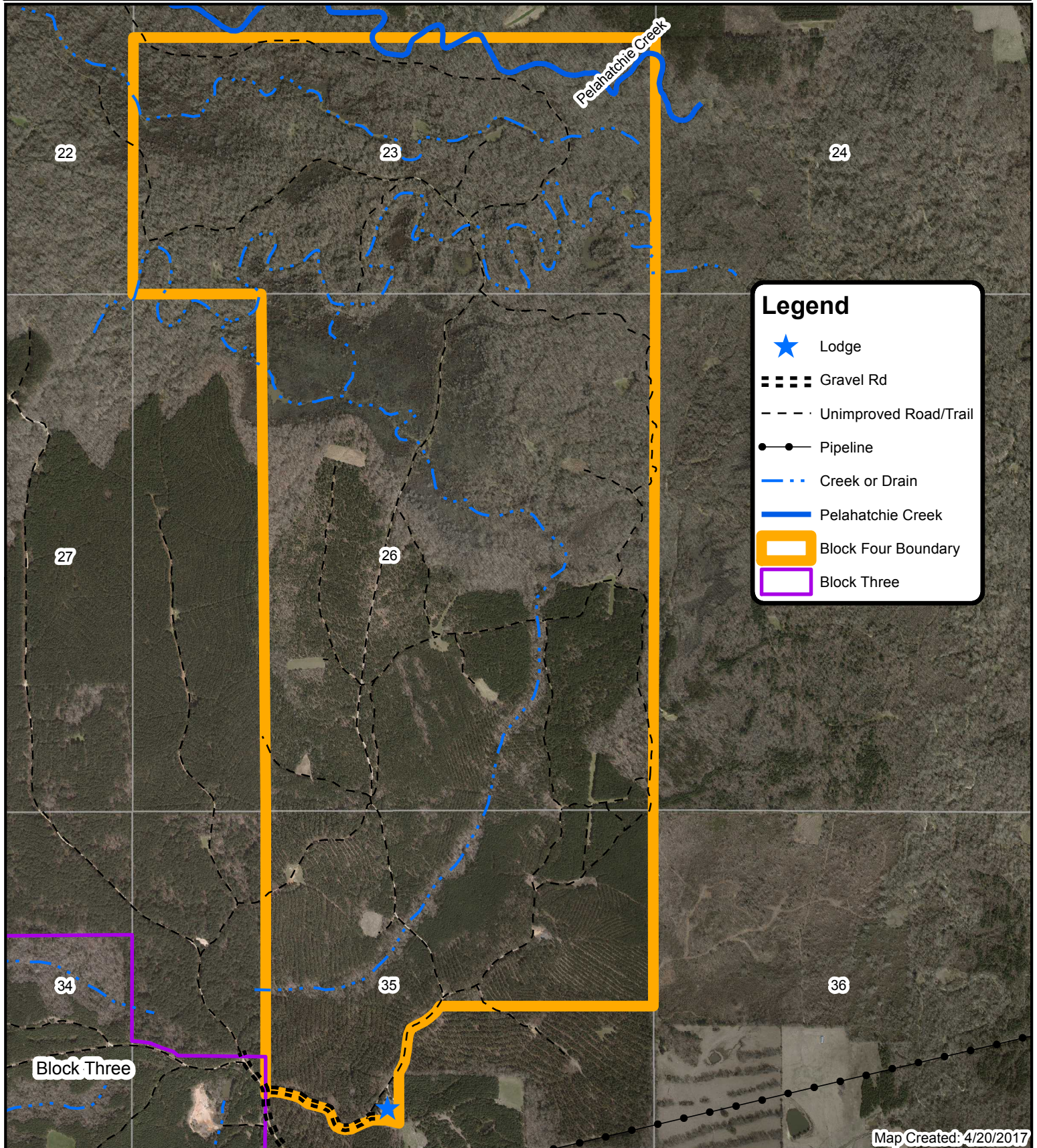


1 inch = 1,320 feet

Ross Properties LLC - Block 4

T6N, R4E, Rankin County, MS

2013 Aerial Map



www.HairstonForestry.com

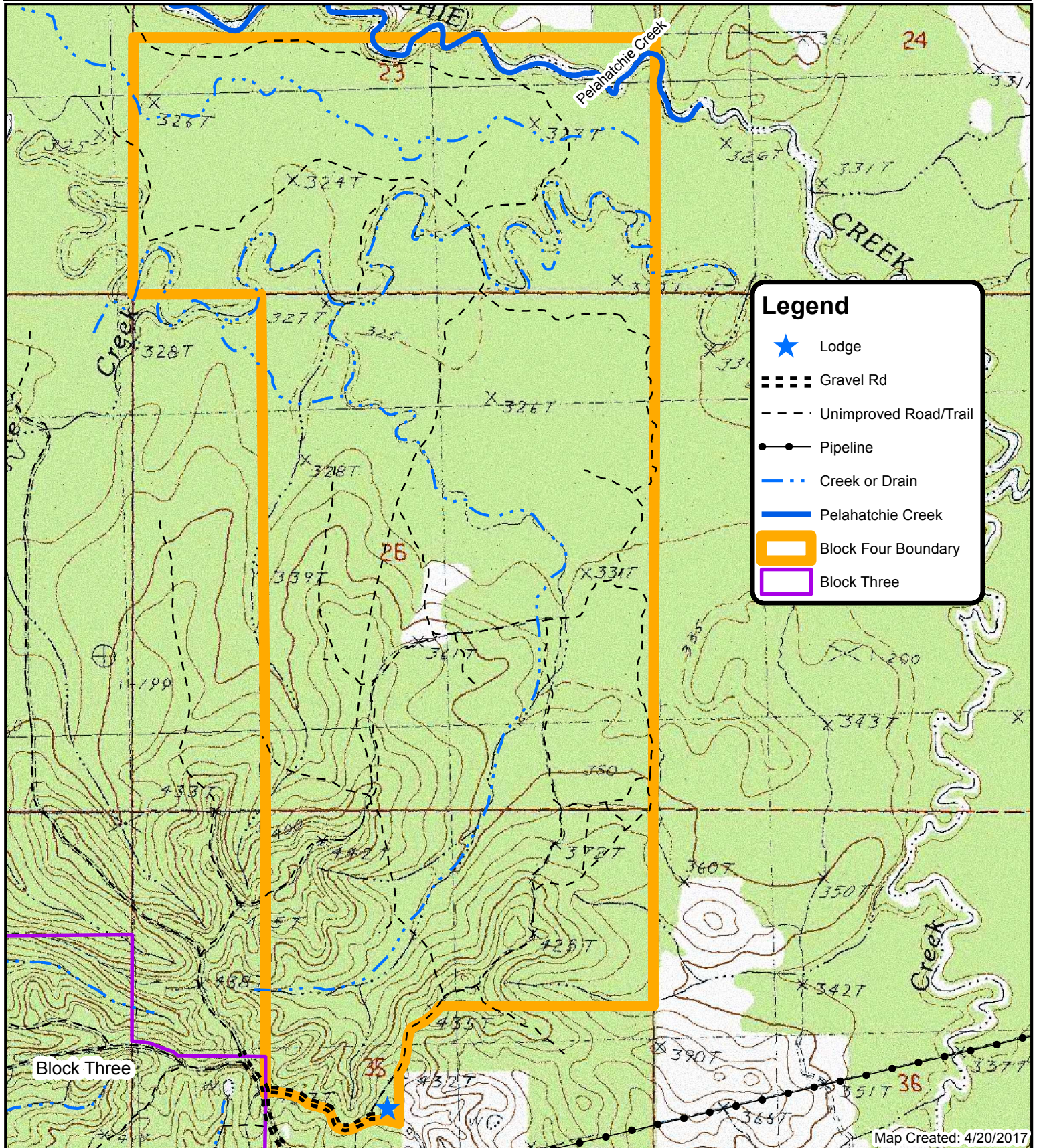


1 inch = 1,320 feet

Ross Properties LLC - Block 4

T6N, R4E, Rankin County, MS

Topo Map



FORESTRY
CONSULTANTS

www.HairstonForestry.com



1 inch = 1,320 feet

Ross Properties LLC

T6N, R5E, Rankin County, MS

Block Division Map

