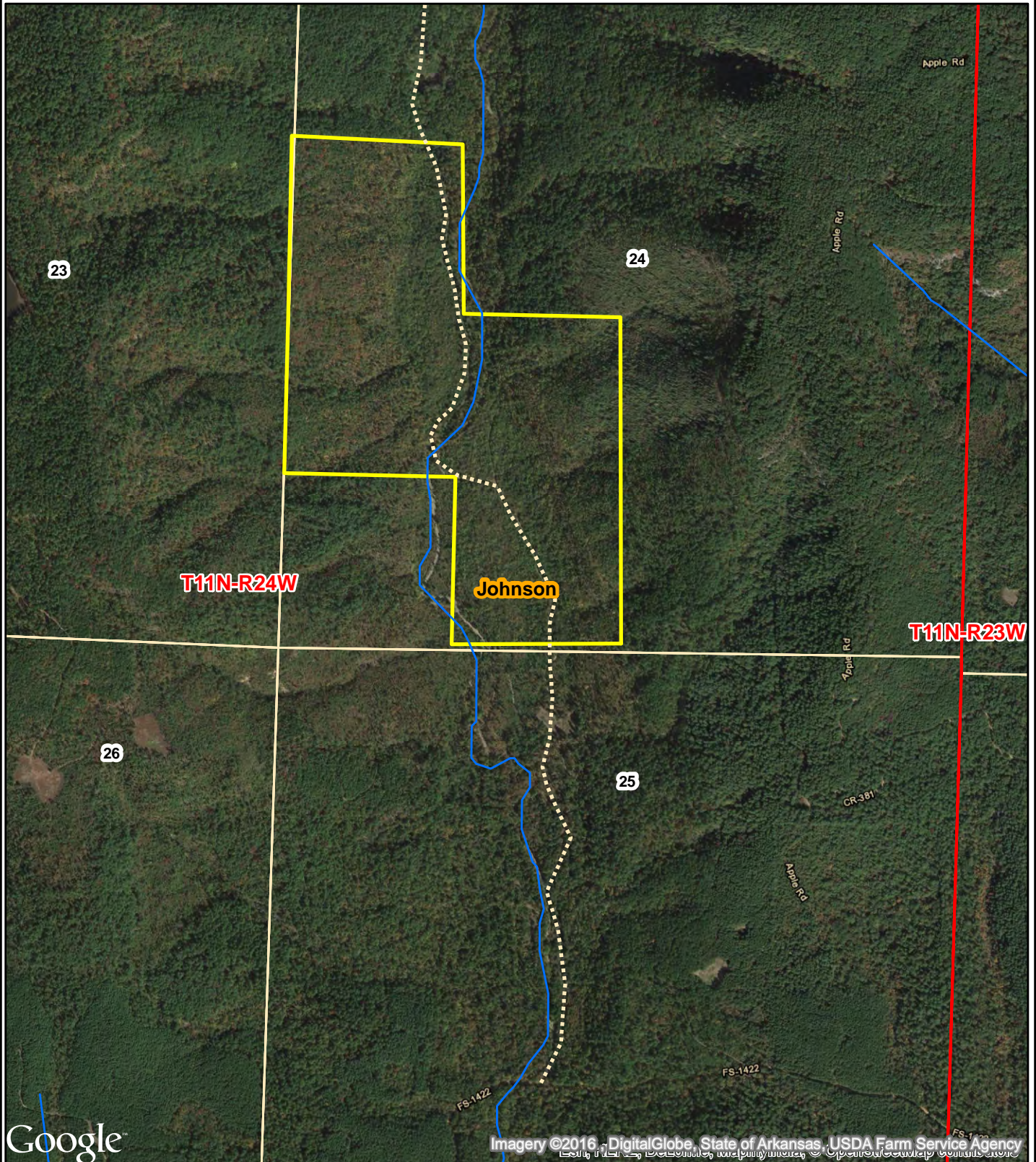


# NOTICE OF LAND SALE

"Ozark National Forest Tract" - Listing #4370

N $\frac{1}{2}$  of SW $\frac{1}{4}$ , SE $\frac{1}{4}$  of SW $\frac{1}{4}$ , SW $\frac{1}{4}$  of NW $\frac{1}{4}$ , Sec. 24, T11N, R24W, Johnson County, Arkansas  
containing 160 acres, more or less



0.25 0.125 0 0.25  
Miles



Created: December, 2016  
ESRI Aerial Photography  
Drawn By: JDT