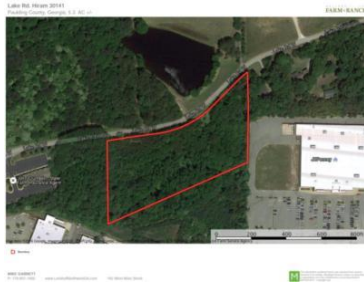


## 0 Lake Rd. W.

## Demographics



**0 Lake Rd W**  
**Hiram, GA 30141**  
**Property Type: Land**  
**Specific Use: Other Land**  
**Lot Size: 5.30 Ac.**  
**County: Paulding**

Population	2015			2016 Projection		
	< 1 Mile	< 3 Miles	< 5 Miles	< 1 Mile	< 3 Miles	< 5 Miles
<b>Total Estimated Population</b>	5,002	19,644	70,373	6,190	23,144	82,546
<b>Total Census 2010 Population</b>	2,707	18,220	55,871	2,707	18,220	55,871
<b>Population Change %</b>	83.9%	18.8%	27.5%	127.4%	40.6%	46.3%
<b>Population Density (People/SQ Mile)</b>	654	671	942	809	785	1,056
<b>Median Age</b>	41	40	40	40	42	41
<b>Total Males</b>	2,451	9,763	34,818	3,032	11,470	40,759
<b>Total Females</b>	2,551	9,881	35,555	3,158	11,674	41,787

Population By Age Group	2015			2016 Projection		
	< 1 Mile	< 3 Miles	< 5 Miles	< 1 Mile	< 3 Miles	< 5 Miles
<b>4 Years Old and Younger</b>	327	1,290	4,817	407	1,486	5,365
<b>5 - 9 Years Old</b>	378	1,515	5,689	453	1,693	6,186
<b>10 - 14 Years Old</b>	383	1,563	5,829	454	1,729	6,432
<b>15 - 19 Years Old</b>	380	1,562	5,685	453	1,760	6,509
<b>20 - 24 Years Old</b>	360	1,428	5,052	441	1,686	6,076
<b>25 - 29 Years Old</b>	332	1,258	4,503	435	1,626	5,765
<b>30 - 34 Years Old</b>	317	1,212	4,529	391	1,412	5,079
<b>35 - 39 Years Old</b>	339	1,386	5,247	388	1,432	5,302
<b>40 - 44 Years Old</b>	391	1,667	6,150	424	1,651	6,172
<b>45 - 49 Years Old</b>	391	1,679	5,986	450	1,786	6,522
<b>50 - 54 Years Old</b>	340	1,391	4,802	421	1,665	5,894
<b>55 - 59 Years Old</b>	304	1,189	4,004	401	1,566	5,380
<b>60 - 64 Years Old</b>	231	847	2,795	324	1,203	4,050
<b>65 - 69 Years Old</b>	175	592	1,918	244	869	2,834
<b>70 - 74 Years Old</b>	129	419	1,328	185	618	1,972
<b>75 - 79 Years Old</b>	99	291	897	132	412	1,297

Population By Age Group	2015			2016 Projection		
	< 1 Mile	< 3 Miles	< 5 Miles	< 1 Mile	< 3 Miles	< 5 Miles
80 - 84 Years Old	63	187	584	92	278	839
85 Years Old and Older	63	168	558	95	272	872

Population By Ethnicity	2015			2016 Projection		
	< 1 Mile	< 3 Miles	< 5 Miles	< 1 Mile	< 3 Miles	< 5 Miles
White	3,790	16,193	56,428	4,587	18,701	64,845
Black	1,155	2,908	12,065	1,519	3,744	15,294
Native American	6	67	205	5	88	256
Asian	2	213	639	3	274	808
Pacific Islander	N/A	4	22	N/A	2	21
2 or More Races	49	259	1,014	76	335	1,322
Hispanic	173	917	3,226	278	1,387	4,638
White Non-Hispanic	3,585	15,161	52,752	4,250	17,118	59,437

Housing	2015			2016 Projection		
	< 1 Mile	< 3 Miles	< 5 Miles	< 1 Mile	< 3 Miles	< 5 Miles
Total Estimated Households	1,781	6,772	23,826	2,189	8,004	27,904
Total Census 2010 Households	1,017	6,201	18,808	1,017	6,201	18,808
Average Household Size	2.8	2.9	2.9	N/A	N/A	N/A
Total Housing Units	1,890	7,474	26,229	1,890	7,474	26,229
Owner	1,448	6,308	22,166	1,448	6,308	22,166
Renter	387	875	2,966	387	875	2,966
Vacant Housing Units	55	293	1,099	55	293	1,099

Income	2015			2016 Projection		
	< 1 Mile	< 3 Miles	< 5 Miles	< 1 Mile	< 3 Miles	< 5 Miles
Under \$10,000	88	224	902	108	262	1,053
\$10,000 - \$14,999	109	253	850	135	311	1,027
\$15,000 - \$19,999	140	354	1,015	174	436	1,235
\$20,000 - \$24,999	103	280	1,075	128	343	1,282
\$25,000 - \$29,999	78	291	1,138	98	356	1,354
\$30,000 - \$34,999	73	408	1,172	91	495	1,392
\$35,000 - \$39,999	108	403	1,173	133	481	1,396
\$40,000 - \$44,999	112	444	1,602	137	532	1,913
\$45,000 - \$49,999	118	340	1,208	144	402	1,433
\$50,000 - \$59,999	262	751	2,968	323	887	3,483
\$60,000 - \$74,999	135	904	3,767	165	1,078	4,423
\$75,000 - \$99,999	290	1,254	4,087	355	1,458	4,698
\$100,000 - \$124,999	62	441	1,604	76	492	1,816

Income	2015			2016 Projection		
	< 1 Mile	< 3 Miles	< 5 Miles	< 1 Mile	< 3 Miles	< 5 Miles
<b>\$125,000 - \$149,999</b>	25	165	529	31	180	584
<b>\$150,000 - \$199,999</b>	39	130	377	49	152	424
<b>Over \$200,000</b>	23	75	206	29	85	232
<b>Median Household Income</b>	\$47,542	\$59,546	\$59,774	\$47,626	\$59,633	\$59,881
<b>Aggregate Household Income</b>	\$99,	\$420,	\$1,	\$121,	\$489,	\$1,
	005,678	747,358	459,058,830	540,374	725,130	687,933,326
<b>Average Household Income</b>	\$56,446	\$64,780	\$64,320	\$56,566	\$64,752	\$64,283
<b>Per Capita Household Income</b>	\$20,171	\$22,093	\$21,714	\$20,069	\$22,096	\$21,682

Household Expenditures	2015			2016 Projection		
	< 1 Mile	< 3 Miles	< 5 Miles	< 1 Mile	< 3 Miles	< 5 Miles
<b>Total Annual Household</b>	\$80,	\$335,	\$1,	\$99,	\$396,	\$1,
	442,188	516,321	179,262,813	669,585	106,919	379,796,169
<b>Average Annual Household</b>	\$45,488	\$51,075	\$51,153	\$45,885	\$51,480	\$51,516
<b>Food</b>	\$5,799	\$6,373	\$6,379	\$5,796	\$6,385	\$6,379
<b>Cereals &amp; Bakery Products</b>	\$425	\$446	\$448	\$421	\$444	\$444
<b>Cereals &amp; Cereal Products</b>	\$153	\$164	\$163	\$154	\$165	\$164
<b>Bakery Products</b>	\$304	\$325	\$325	\$294	\$312	\$312
<b>Meats, Poultry, Fish &amp; Eggs</b>	\$915	\$984	\$988	\$934	\$1,002	\$1,009
<b>Dairy ProductseFMisc</b>	\$367	\$396	\$396	\$377	\$409	\$408
<b>Housing</b>	\$14,756	\$16,317	\$16,308	\$14,947	\$16,530	\$16,501
<b>Owned Dwellings</b>	\$5,854	\$6,820	\$6,822	\$5,971	\$6,969	\$6,963
<b>Mortgage Interest &amp; Charges</b>	\$3,005	\$3,543	\$3,551	\$2,850	\$3,339	\$3,353
<b>Property Taxes</b>	\$1,667	\$1,917	\$1,915	\$1,624	\$1,853	\$1,853
<b>Rented Dwellings</b>	\$2,316	\$2,152	\$2,155	\$2,238	\$2,071	\$2,074
<b>Utilities, Fuels &amp; Public Services</b>	\$3,321	\$3,566	\$3,574	\$3,349	\$3,576	\$3,582
<b>Natural Gas</b>	\$492	\$527	\$527	\$474	\$505	\$505
<b>Electricity</b>	\$1,203	\$1,280	\$1,280	\$1,213	\$1,280	\$1,280
<b>Fuel Oil or Other Fuels</b>	\$127	\$133	\$133	\$128	\$134	\$134
<b>Telephone Services</b>	\$1,098	\$1,181	\$1,187	\$1,148	\$1,241	\$1,247
<b>Water &amp; Other Public Services</b>	\$357	\$384	\$385	\$369	\$397	\$398
<b>Household Operations</b>	\$753	\$869	\$863	\$745	\$859	\$855
<b>Personal Services</b>	\$284	\$326	\$325	\$287	\$329	\$327
<b>Other Household Expenses</b>	\$509	\$586	\$588	\$523	\$609	\$609
<b>Housekeeping Supplies</b>	\$616	\$669	\$669	\$597	\$647	\$645
<b>Household Furnishings &amp; Equipment</b>	\$1,581	\$1,823	\$1,819	\$1,515	\$1,727	\$1,725
<b>Furniture</b>	\$425	\$498	\$499	\$413	\$480	\$482
<b>Floor Coverings</b>	\$42	\$49	\$49	\$42	\$48	\$49
<b>Major Appliances</b>	\$230	\$258	\$256	\$230	\$259	\$257

Household Expenditures	2015			2016 Projection		
	< 1 Mile	< 3 Miles	< 5 Miles	< 1 Mile	< 3 Miles	< 5 Miles
<b>Sm. Appliances &amp; Misc Housewares</b>	\$100	\$112	\$111	\$101	\$113	\$112
<b>Apparel &amp; Services</b>	\$1,638	\$1,828	\$1,828	\$1,656	\$1,843	\$1,842
<b>Transportation</b>	\$8,367	\$9,424	\$9,497	\$8,582	\$9,656	\$9,734
<b>Maintenance &amp; Repairs</b>	\$643	\$706	\$708	\$641	\$700	\$700
<b>Vehicle Insurance</b>	\$1,166	\$1,287	\$1,288	\$1,181	\$1,286	\$1,287
<b>Public Transportation</b>	\$416	\$490	\$490	\$414	\$486	\$486
<b>Health Care</b>	\$3,040	\$3,247	\$3,254	\$2,981	\$3,181	\$3,186
<b>Entertainment</b>	\$2,399	\$2,761	\$2,770	\$2,479	\$2,868	\$2,871
<b>Tobacco &amp; Smoking Related</b>	\$284	\$290	\$289	\$295	\$301	\$300
<b>Cash Contributions</b>	\$1,511	\$1,743	\$1,738	\$1,511	\$1,741	\$1,734
<b>Personal Insurance &amp; Pensions</b>	\$4,895	\$5,900	\$5,903	\$4,819	\$5,762	\$5,766
<b>Life &amp; Other Personal Insurance</b>	\$380	\$438	\$437	\$385	\$442	\$441
<b>Pensions &amp; Social Security</b>	\$4,525	\$5,468	\$5,472	\$4,453	\$5,347	\$5,352