

# -FOR SALE- CROPLAND - SCENIC HUNTING CHEYENNE COUNTY, KS

Another Great Listing Offered by:



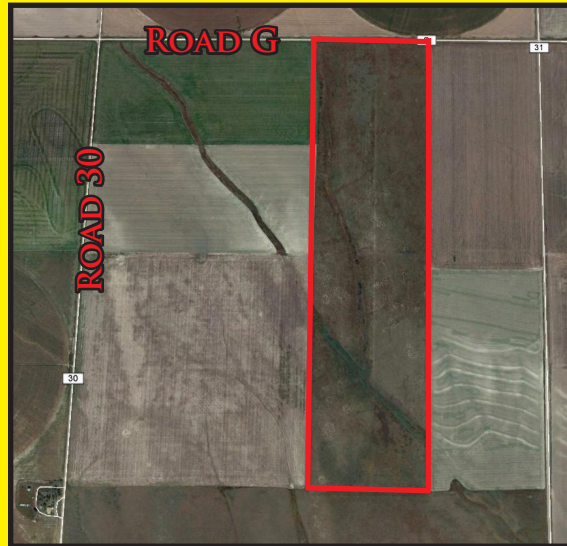
**785-332-8990**



**Asking Price \$240,000**

W/2 of E/2 of 5-5-37

160.93 ac., Approx. 25 acres of grassy area for wildlife, balance in cropland  
*Hunting enthusiast? Consider this property located approx. 8 miles southeast of Bird City, Ks to add to your portfolio and enjoy the wildlife and ag production!*  
Seller's Mineral Interest to Buyer  
2015 Taxes \$577.57



Information provided, while not guaranteed, is believed to be from reliable sources. FSA information obtained from the Cheyenne County FSA office. Maps courtesy of Cheyenne County FSA and Google Earth.



**Auction & Real Estate, LLC**

d/b/a in NE as Auction & Real Estate by Western LLC

**785-332-8990**

**[westernauctionandrealestate.com](http://westernauctionandrealestate.com)**

**P.O. Box 928 - St. Francis, KS 67756**

**Betty L. Petersen, Broker**

**785-332-8421**

**Skip Petersen, Sales Agent**

**& Auctioneer 785-332-8221**

**Robin A. Petersen, Assoc. Broker**

**& Auctioneer 785-332-5586**

**Brett Petersen, Ks. Agent**

**& Auctioneer 785-332-7121**

**"From Concept to Completion!"**

**Licensed in Kansas, Colorado & Nebraska**