

22± Acres For Sale



LOCATION Schertz, Texas, Bexar County

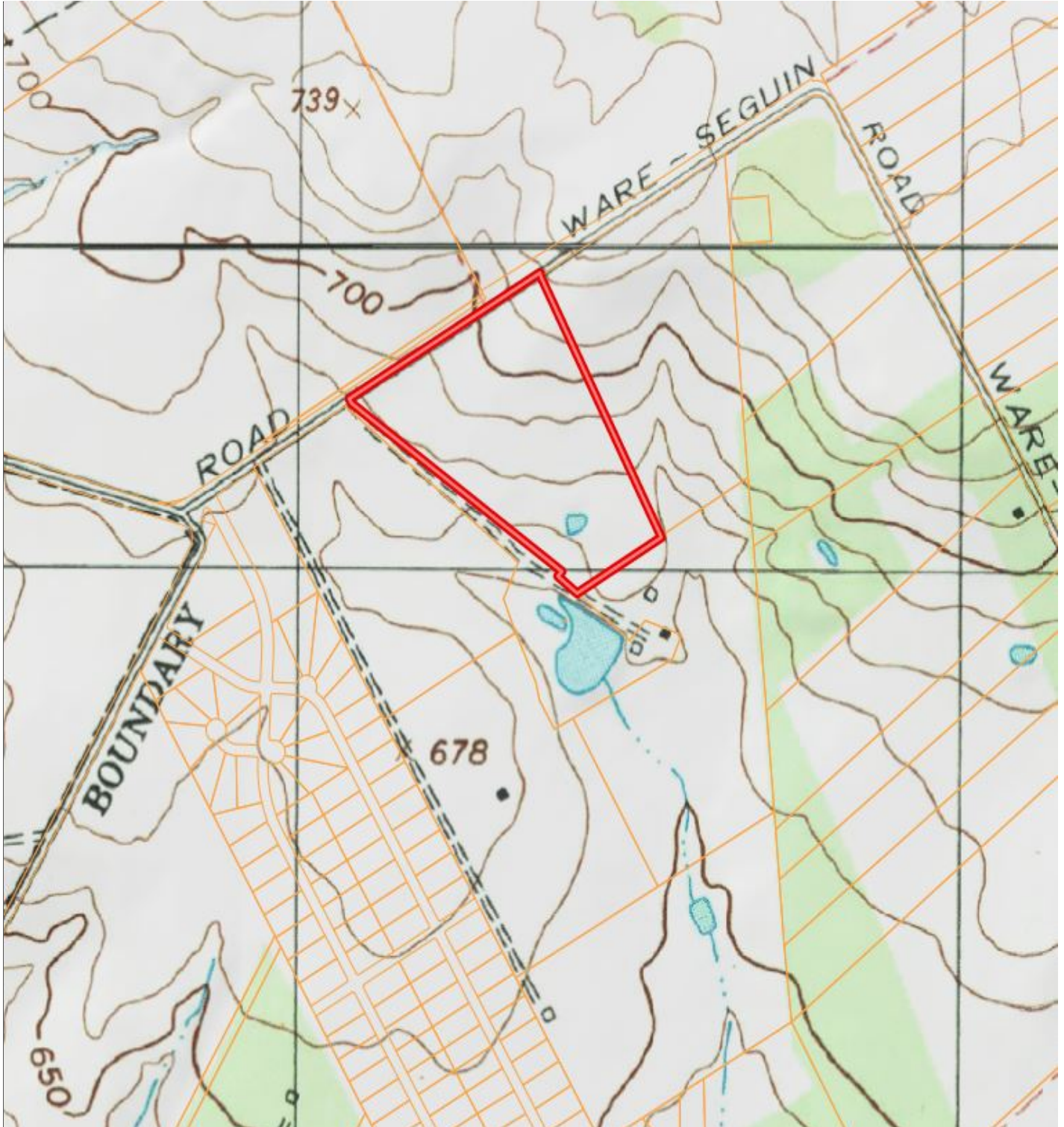
FEATURES This property has 1,060 feet of Ware-Seguin Road frontage. Great visibility and Ag exempt! A portion of the property is in the Randolph AFB overlay district. Ideal for commercial/industrial use. The rear of the property can be used for single family 1/2 acre tracts.

PRICING \$374,550

HAROLD (BUTCH) GALM, LREB

210.688.3874 | haroldgalm@galmrealestate.net

Proudly Serving San Antonio, Hill Country & South Texas Area for 35 Years



Call for an appointment Harold (Butch) Galm 210.688.3874

The information contained herein has been obtained from sources believed to be reliable; however, Galm Real Estate, LLC makes no guarantee, warranties or representation as to the accuracy or completeness of these materials. This presentation of this property is subject to errors, omissions, change of price or conditions, prior sale or lease, or cancellation or modification without notice. © 2014 Galm Real Estate.



ACREAGE TRACTS

11080 Ware-Seguin Road | Schertz, TX



Call for an appointment Harold (Butch) Galm 210.688.3874

The information contained herein has been obtained from sources believed to be reliable; however, Galm Real Estate, LLC makes no guarantee, warranties or representation as to the accuracy or completeness of these materials. This presentation of this property is subject to errors, omissions, change of price or conditions, prior sale or lease, or cancellation or modification without notice. © 2014 Galm Real Estate.

TYPES OF REAL ESTATE LICENSE HOLDERS: