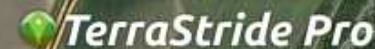
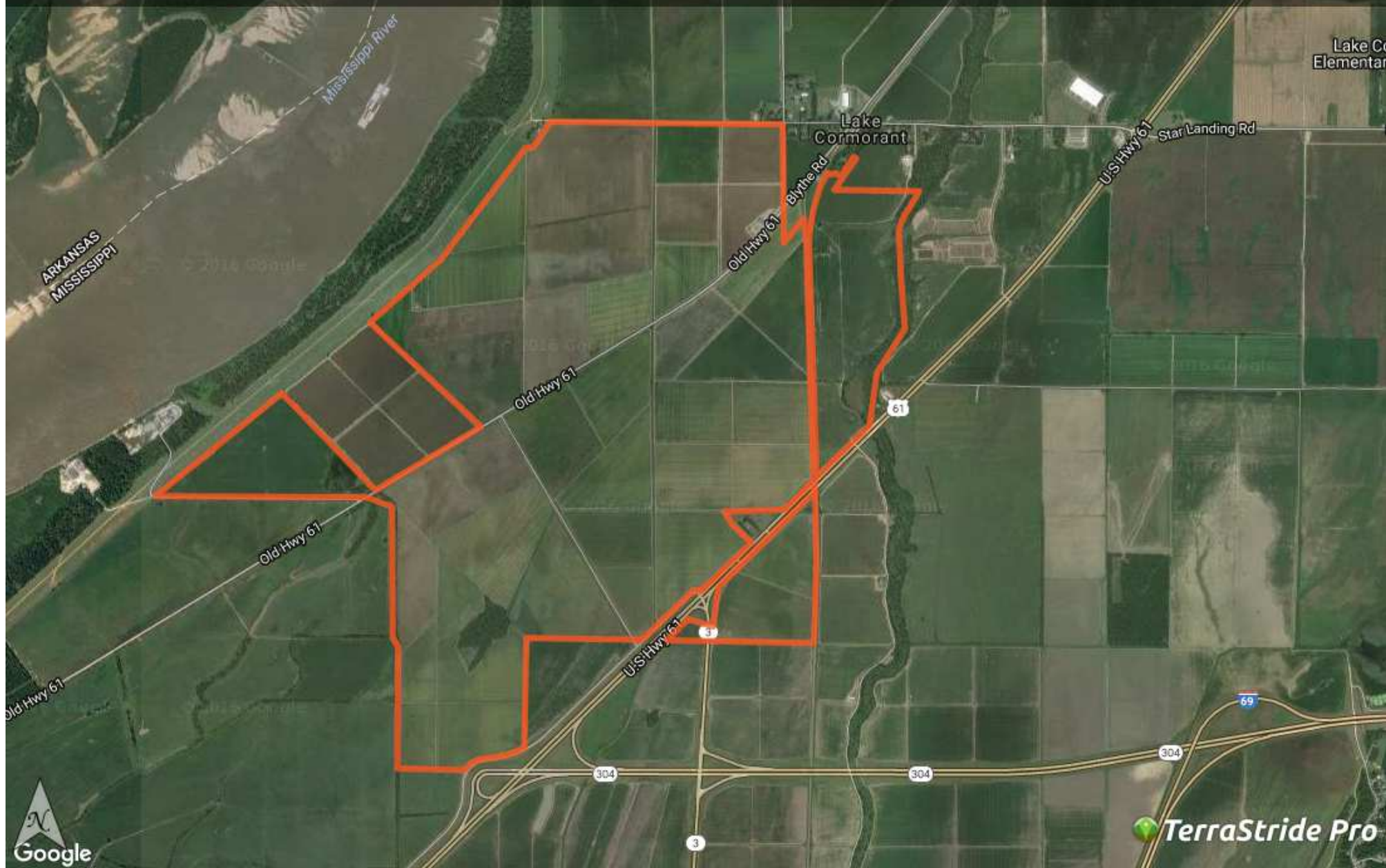




MS - Desoto / Tunica Tulip
Farm / 2369 acres +/-
2292.85 acres
\$15,500,000

Brown Realty Co
Mike Watson
(318) 547-7386

mwatson@brownrealtyco.com
<http://www.brownrealtyco.com/>



Property Report—MS - Desoto / Tunica Tulip Farm / 2369 acres +/-

Legend

Feature	Icon	Colors
Boundary		<div></div>

Description

Excellent farm or development property off of Highway 61 just north of Tunica, MS. This tract is approximately 75% precision leveled, with leveling work continuing all of the time. There are 14 irrigation wells, 8 of them are brand new. This tract lies just north of the casinos at Tunica, MS. The tract lies just off of the Mississippi River Levee. Brown Realty Co
Jerry Brown, Broker 2189 Hwy 425 Rayville, LA 71269 318-728-9544

DISCLAIMER: The information contained herein is as obtained by this broker from sellers, owners, or other sources. This information is considered reliable, neither this broker nor owners make any guarantee, warranty or representation as to correctness of any data or descriptions and the accuracy of such statements. The correctness and / or accuracy of any and all statements should be determined through independent investigation made by the prospective purchaser. Any offer for sale is subject to prior sale, errors and omissions, change of price, terms or other conditions or withdrawal from sale

Generated on: Oct. 17, 2016