



Area Homes Specialists

Setting the trend for how Real Estate is sold in the Midwest.

www.BarnesRealty.com

18156 Hwy 59
Mound City, MO 64470
(660) 442-3177

1711 Oregon
Hiawatha, KS 66434
(785) 742-4580

1708 Prairie View Rd, Suite B
Platte City, MO 64079
(816) 219-3010

14290 E Highway, Camden Point, Mo.

This is a nice cozy home located just walking distance from the school! It has plenty of extra space for storage and lots of shade! Seller's are even willing to put up a home warranty!



Back side of home



Front side of home

Price: \$139,900.00

Lot Size: 0.47 Acres

Garage: Detached 2 car

Exterior: Front/Siding
Back/Wood

Bedrooms: 3

2015 Taxes: Approx \$1400.00

Water: City

Heating/ Cooling: Central

Baths: 2

Approx. Sq. Ft: 1486 Sq. ft.

Sewer: Septic Tank

Foundation: Concrete

Other Features:

- Extra parking space up to 6 +!
- Chain link fenced in yard
- Patio deck 10 X 20 with stairs
- Dishwasher
- Electric oven range
- Newer carpet and flooring
- Large Quonset for extra storage
- Garbage disposal
- Newer roof 1 year old
- Gas water heater
- Laminate kitchen counter tops
- Rock landscaping
- Large detached garage

Agent: Jared Innis

(816) 985-1349 or jared@barnesrealty.com

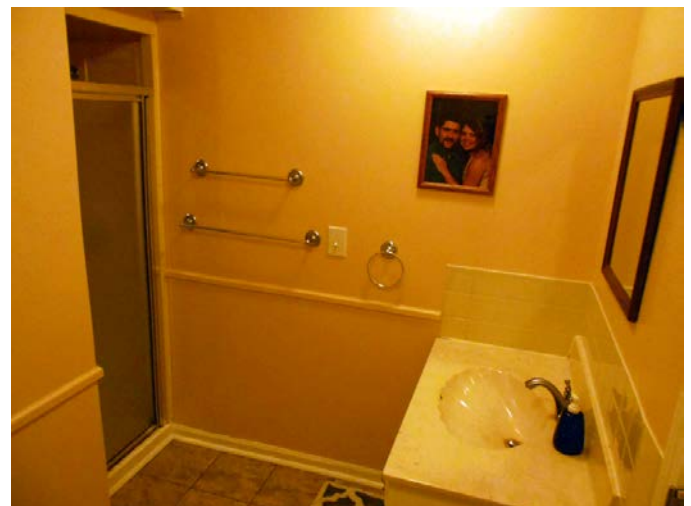
14290 E Highway, Camden Point, Mo.



14290 E Highway, Camden Point, Mo.



14290 E Highway, Camden Point, Mo.



14290 E Highway, Camden Point, Mo.



14290 E Highway, Camden Point, Mo.



14290 E Highway, Camden Point, Mo.

