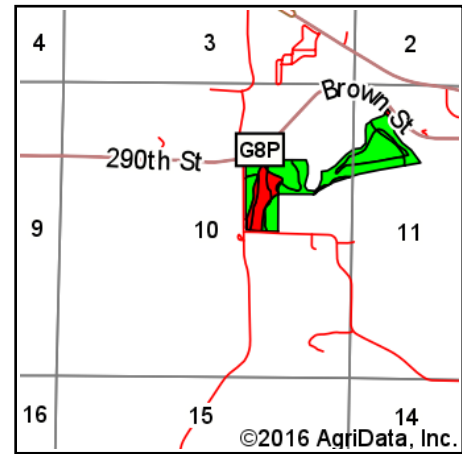
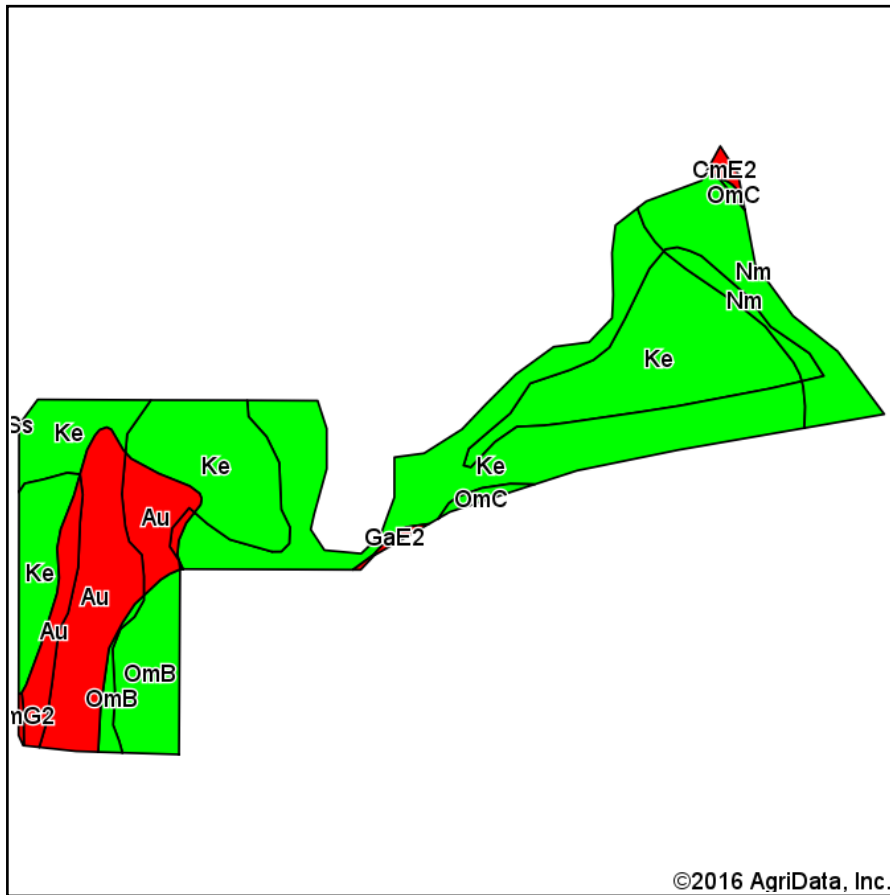


# Soils Map



State: **Iowa**  
 County: **Madison**  
 Location: **10-74N-27W**  
 Township: **Walnut**  
 Acres: **46.25**  
 Date: **8/8/2016**



Area Symbol: IA121, Soil Area Version: 19

Code	Soil Description	Acres	Percent of field	CSR2 Legend	Non-Irr Class *c	*i Corn	*i Soybeans	CSR2**	CS R
Ke	Kennebec silt loam	28.71	62.1%		Iw	228.8	66.4	92	86
Au	Alluvial land	8.36	18.1%		IIIw	112	32.5	5	20
Nm	Nodaway silt loam	4.94	10.7%		IIw	211.2	61.2	82	85
OmB	Olmitz loam, 2 to 5 percent slopes	3.51	7.6%		Ile	224	65	90	72
OmC	Olmitz loam, 5 to 9 percent slopes	0.33	0.7%		IIle	208	60.3	85	57
CmE2	Clanton-Gosport silt loams, 14 to 18 percent slopes, moderately eroded	0.20	0.4%		VIle	88	25.5	12	5
GaE2	Gara loam, 14 to 18 percent slopes, moderately eroded	0.13	0.3%		VIle	131.2	38	35	33
CmG 2	Clanton-Gosport silt loams, 25 to 40 percent slopes, moderately eroded	0.07	0.2%		VIle	88	25.5	5	5
Weighted Average						204.2	59.2	74.4	72.1

Area Symbol: IA121, Soil Area Version: 19

\*\*IA has updated the CSR values for each county to CSR2.

\*i Yield data provided by the ISPAID Database version 8.1 developed by IA State University.

\*c: Using Capabilities Class Dominant Condition Aggregation Method

Soils data provided by USDA and NRCS.