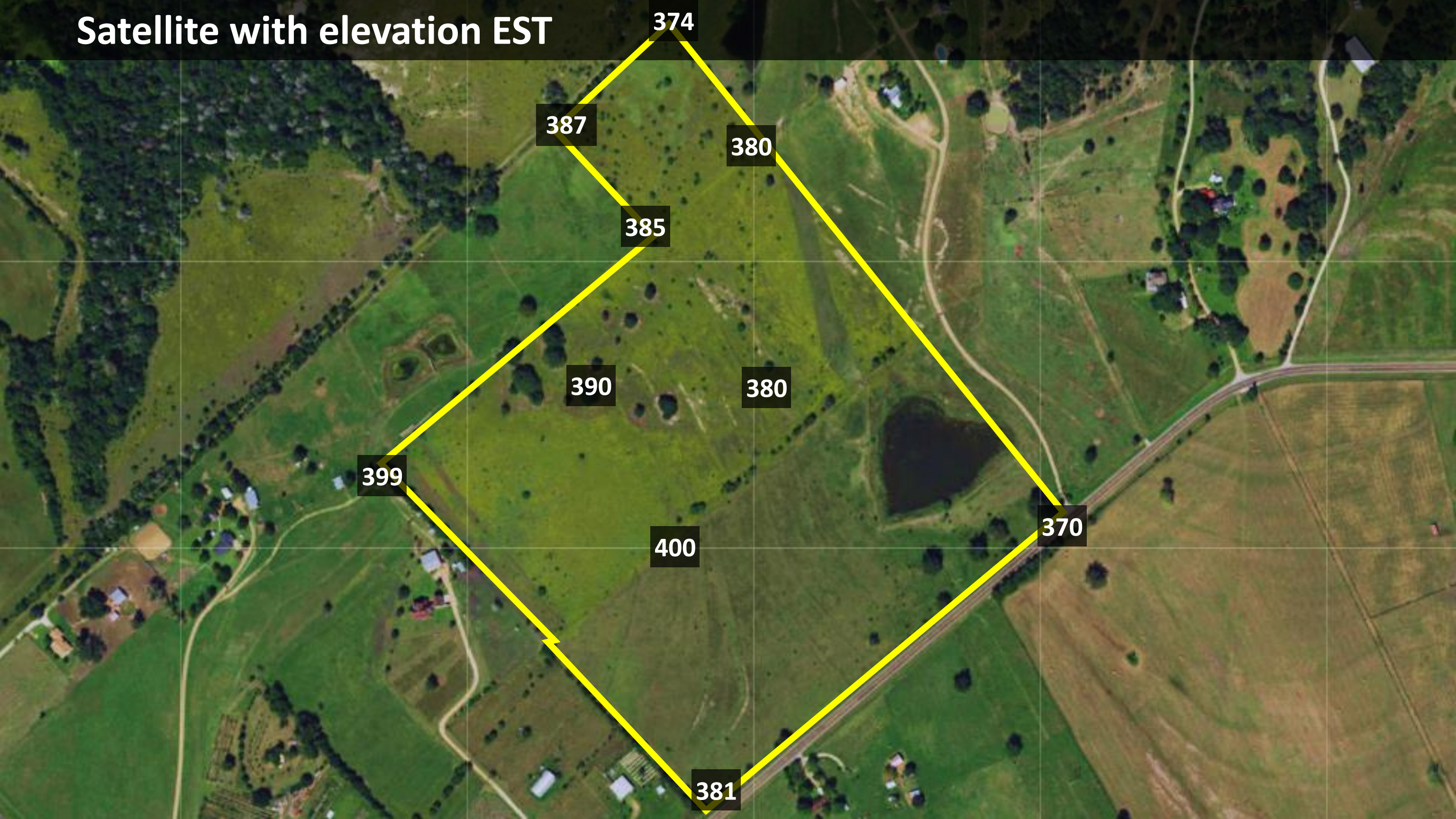


Satellite



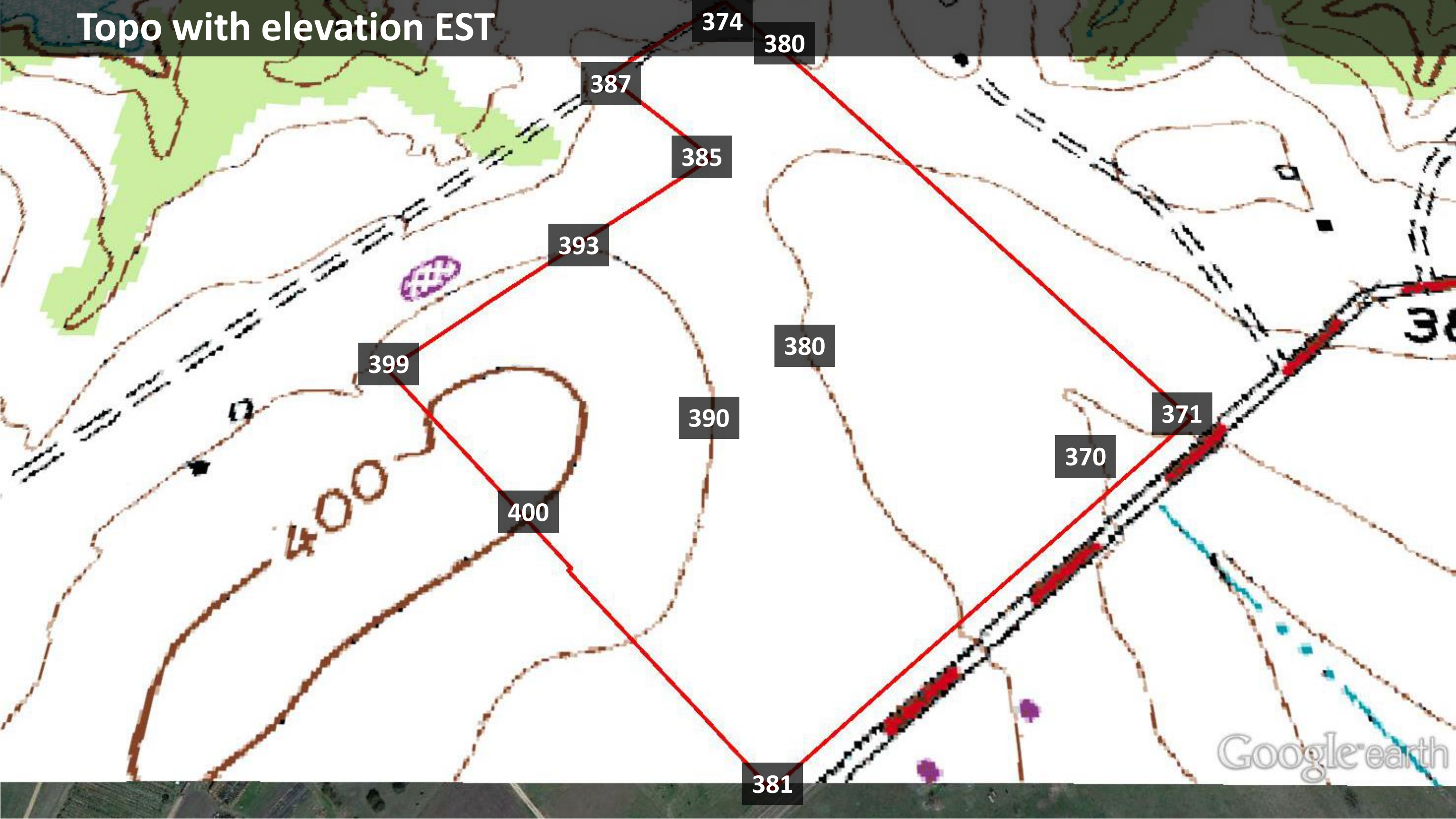


Satellite with elevation EST

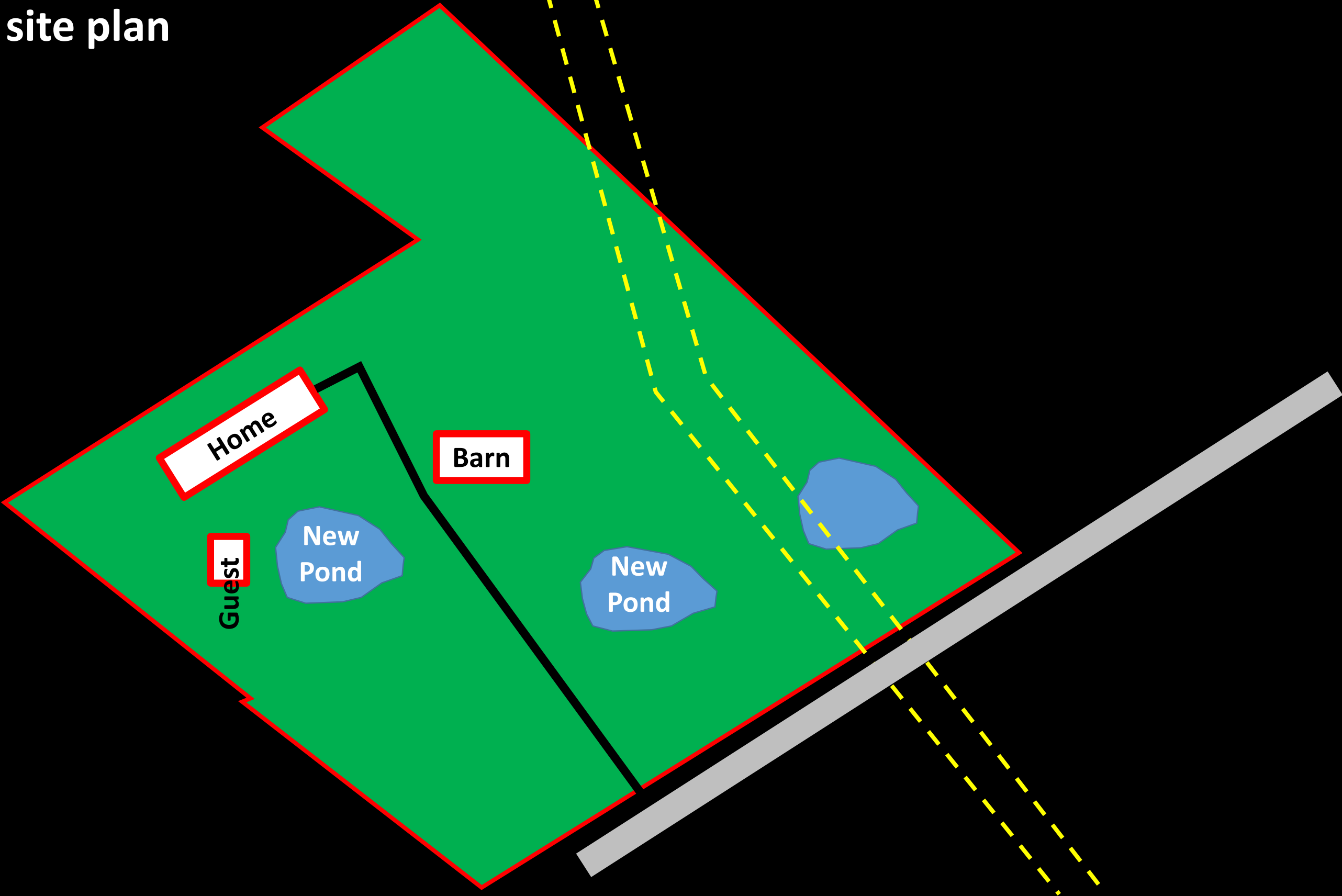




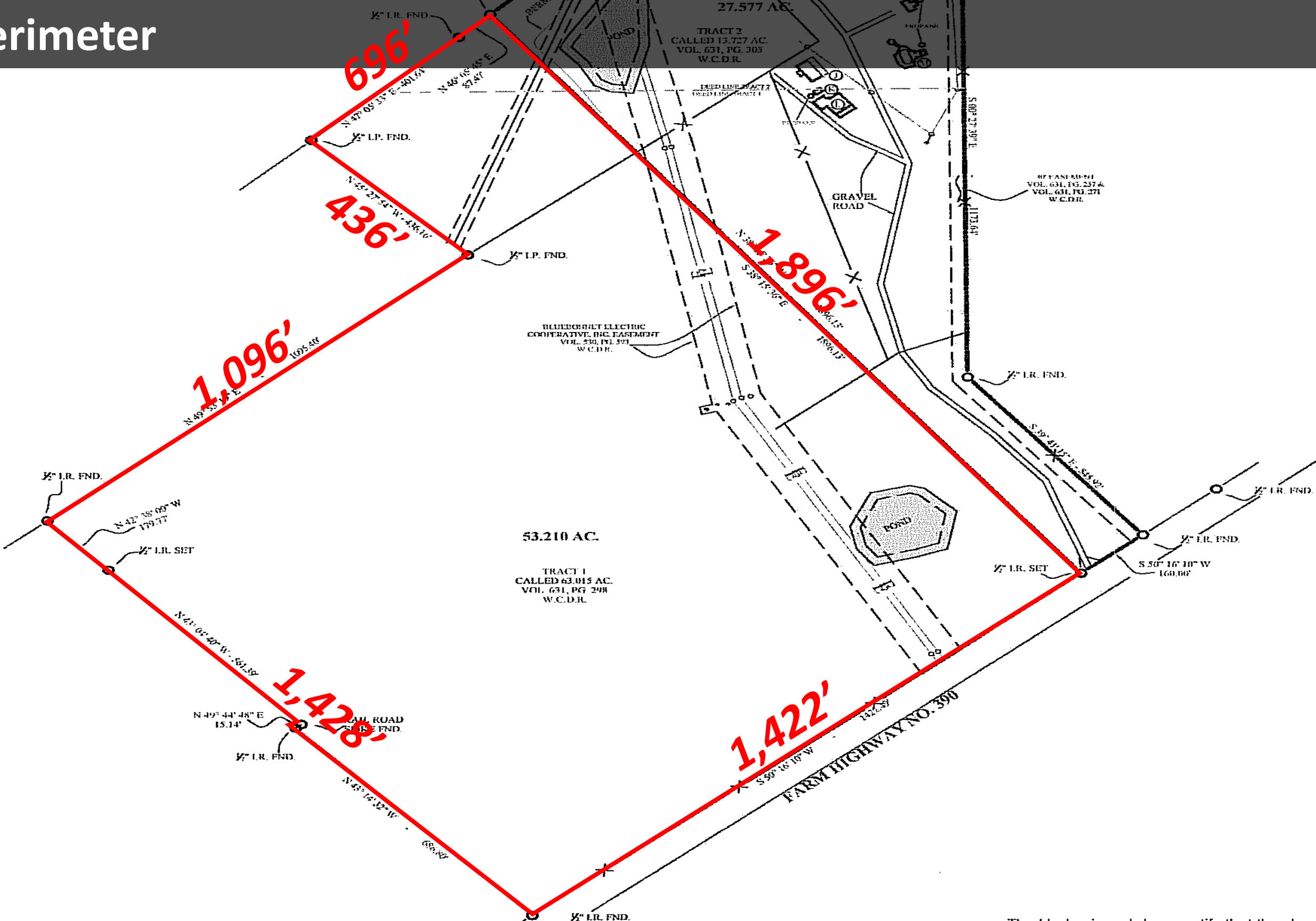
# Topo with elevation EST



Sample site plan



Perimeter





**Keep 30 acres & resell 23 acres**



**Keep 30 acres**

The image is an aerial photograph of a rural landscape. A large, irregularly shaped area is outlined in yellow, representing a total of 53 acres. Within this yellow-outlined area, a smaller, roughly rectangular region is filled with a solid red color, representing 30 acres to be kept. The text 'Keep 30 acres' is centered within this red area. The surrounding landscape includes green fields, a small pond, a road, and some scattered trees and buildings.



**Keep 20 acres & resell 33 acres**



**Keep 20 acres**

The image is an aerial photograph of a rural landscape with green fields, scattered trees, and a few buildings. A large, irregular polygon is outlined in yellow, representing a total area of 53 acres. Within this yellow-outlined area, a smaller, roughly rectangular region is filled with a solid red color, representing 20 acres to be kept. The text 'Keep 20 acres' is centered within the red area. The text 'Keep 20 acres & resell 33 acres' is positioned at the top left of the image, outside the main map area.



Texas / Burton

# Burton Independent School District

Grades PK-12 | Schools 2



GreatSchools  
District rating

This district's rating is based on its schools' test results.

[Learn more »](#)

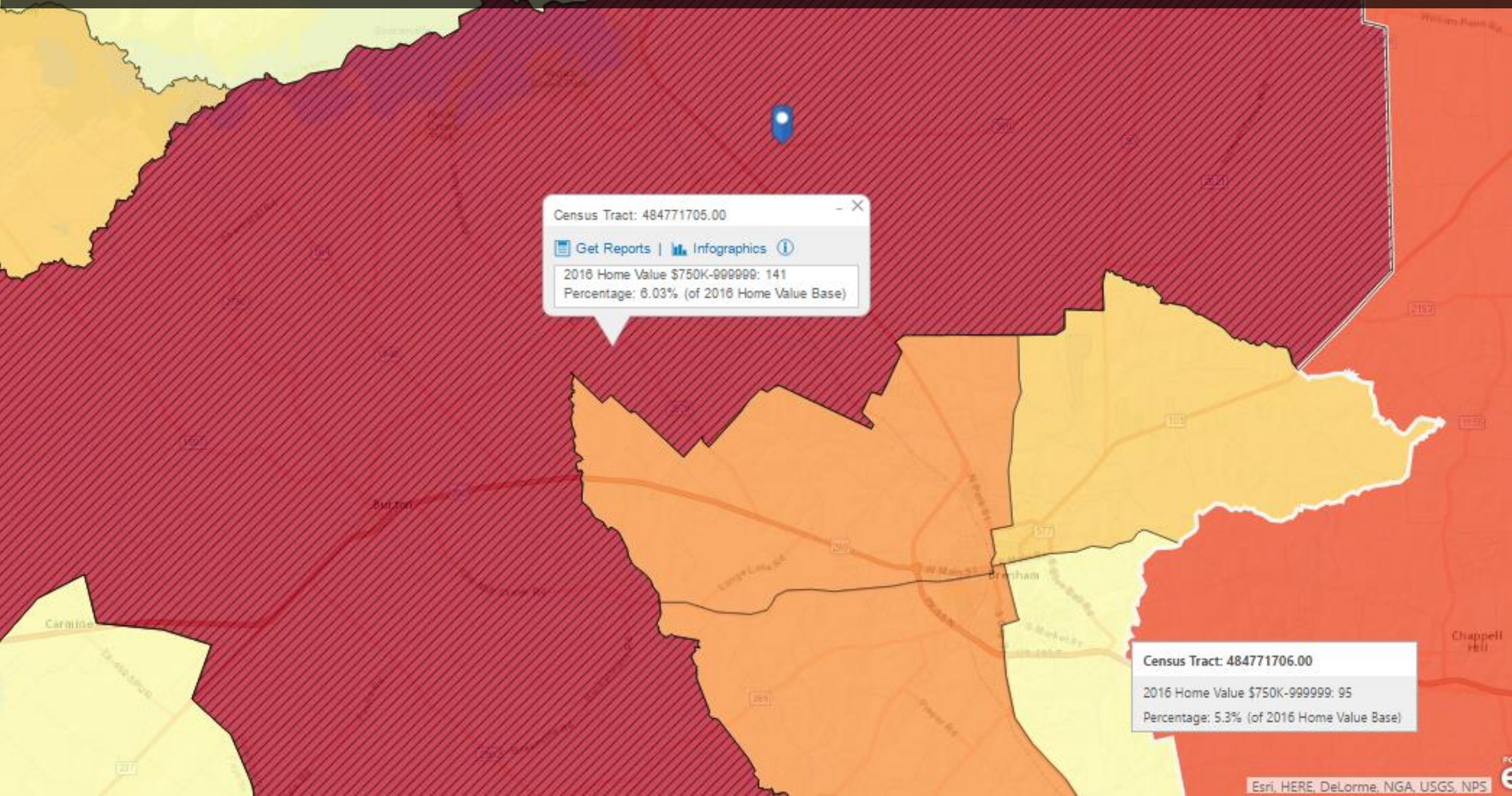
P O Box 37  
Burton, TX 77835

Phone: (979) 289-3131  
[District website](#)

Some districts allow students to transfer to schools either in or outside their district. Children can also attend charter schools. Low-income students are eligible for scholarship funding to attend private schools. Under the federal No Child Left Behind law, students attending a Title I school designated as "in need of improvement" have the right to attend a higher performing school in the district.

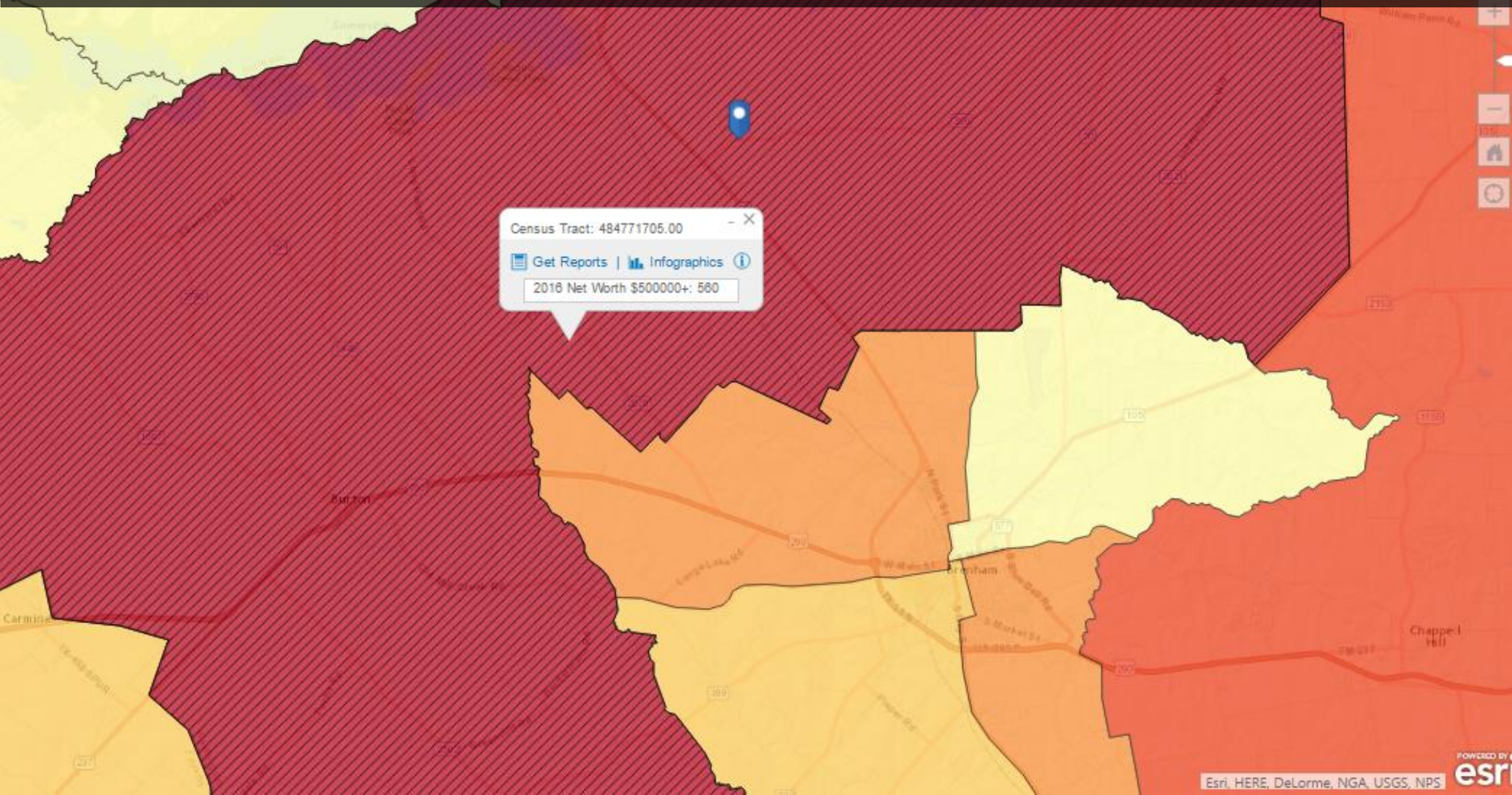


# The Independence Gay Hill Census Tract – high home values



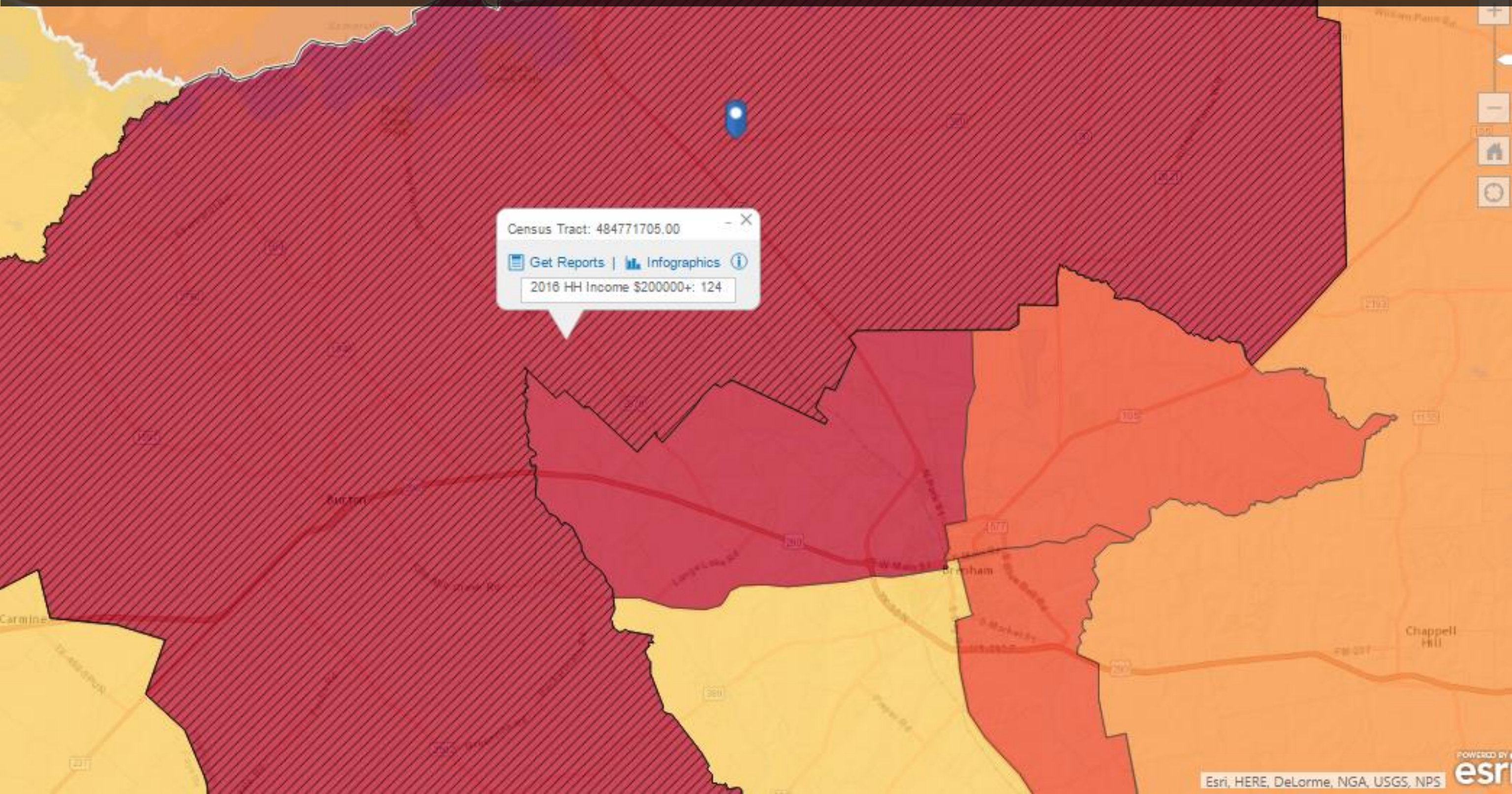


# The Independence Gay Hill Census Tract – high net worth



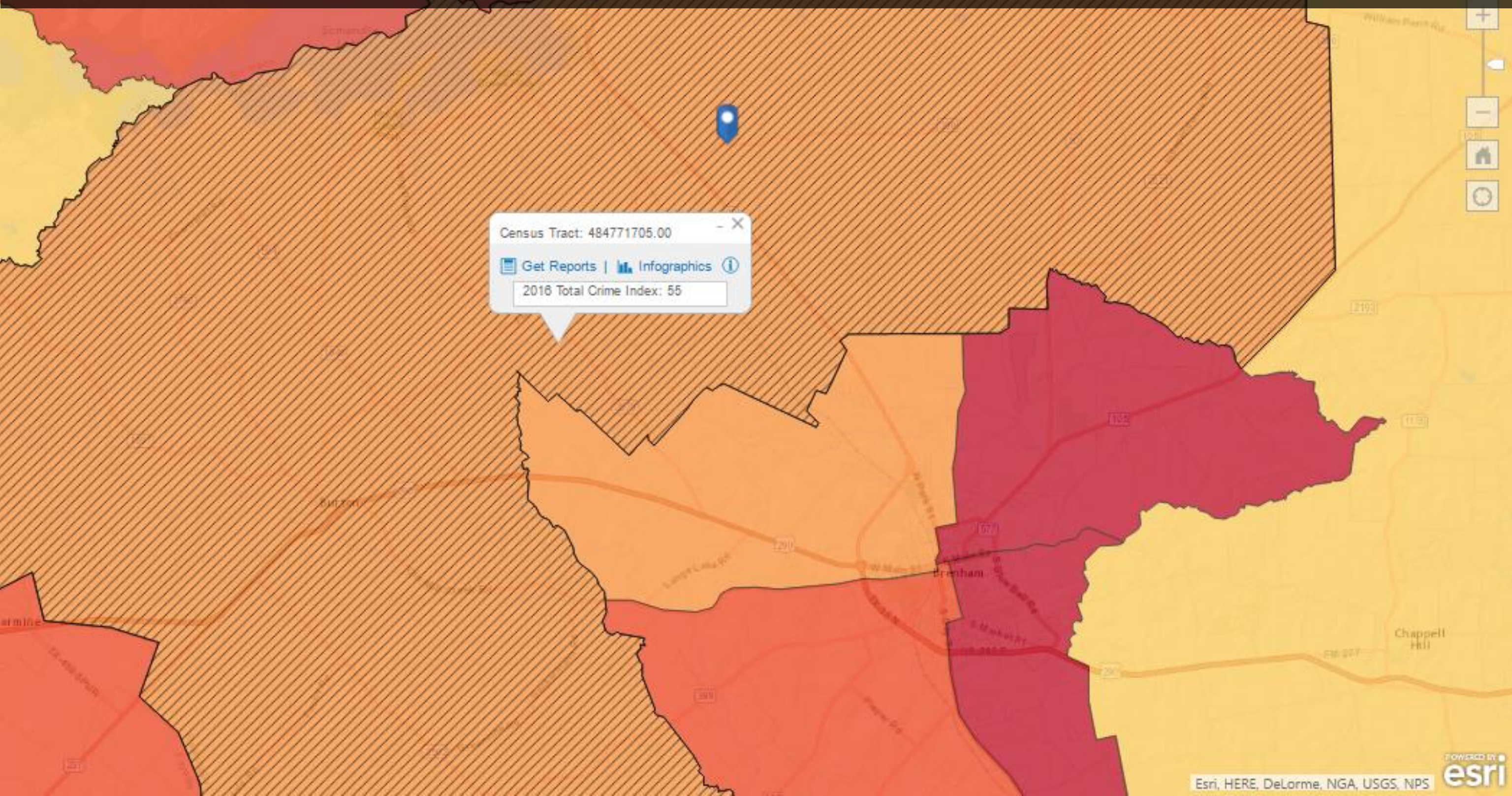


# The Independence Gay Hill Census Tract – high household incomes



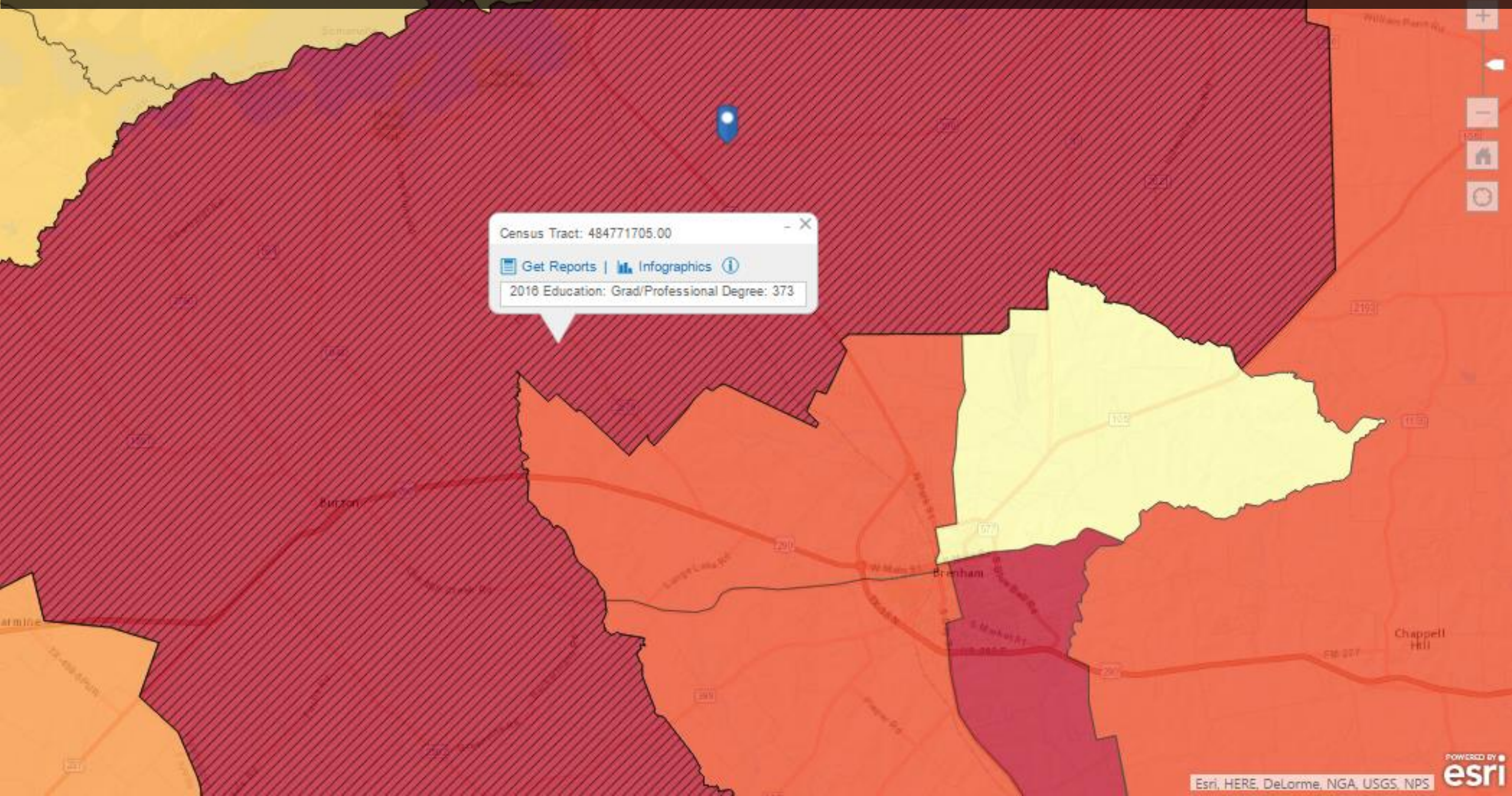


# The Independence Gay Hill Census Tract – low crime rate

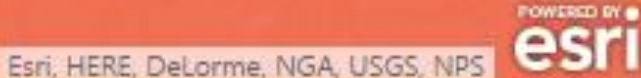




# The Independence Gay Hill Census Tract – high education achievement

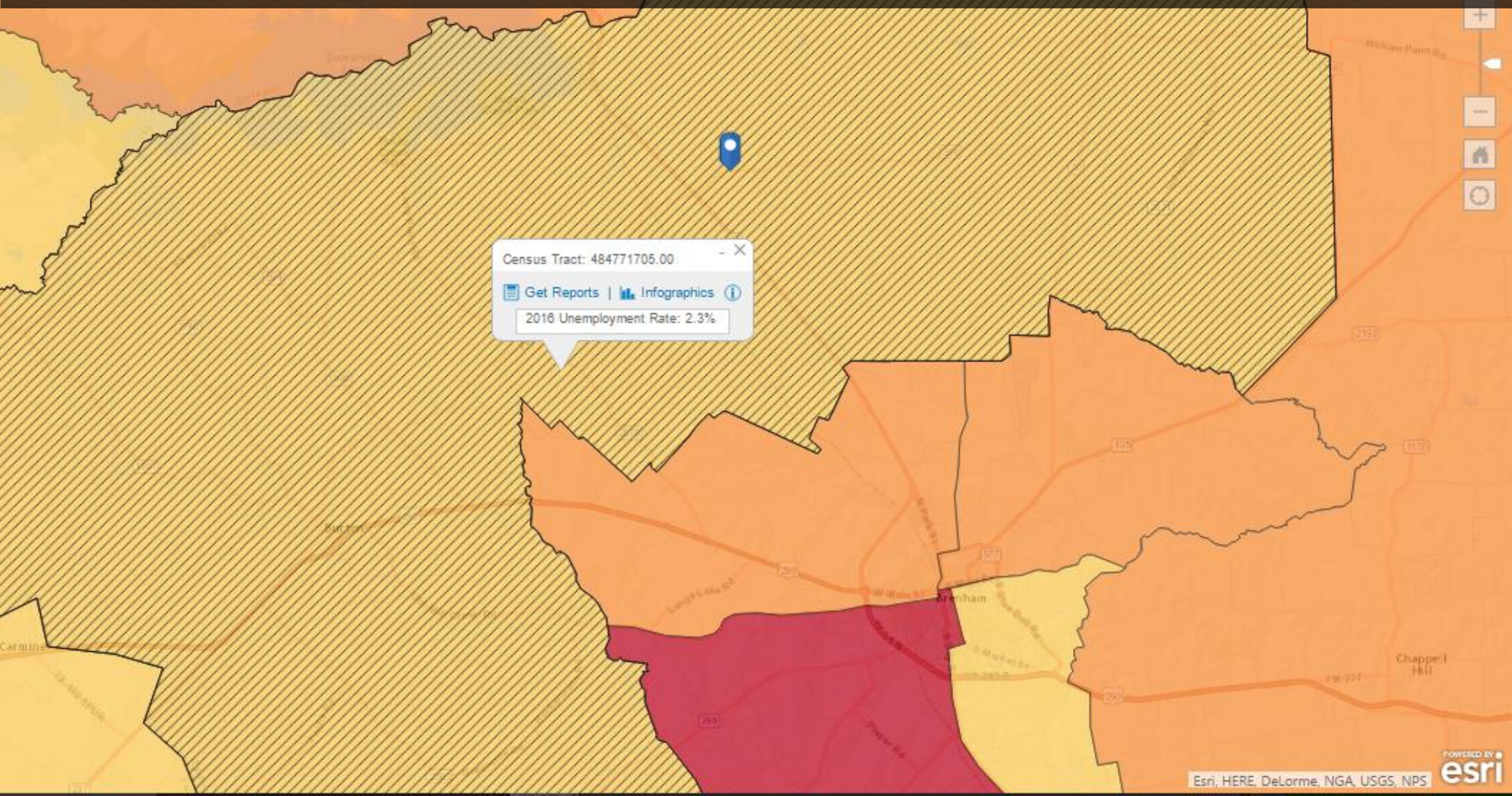






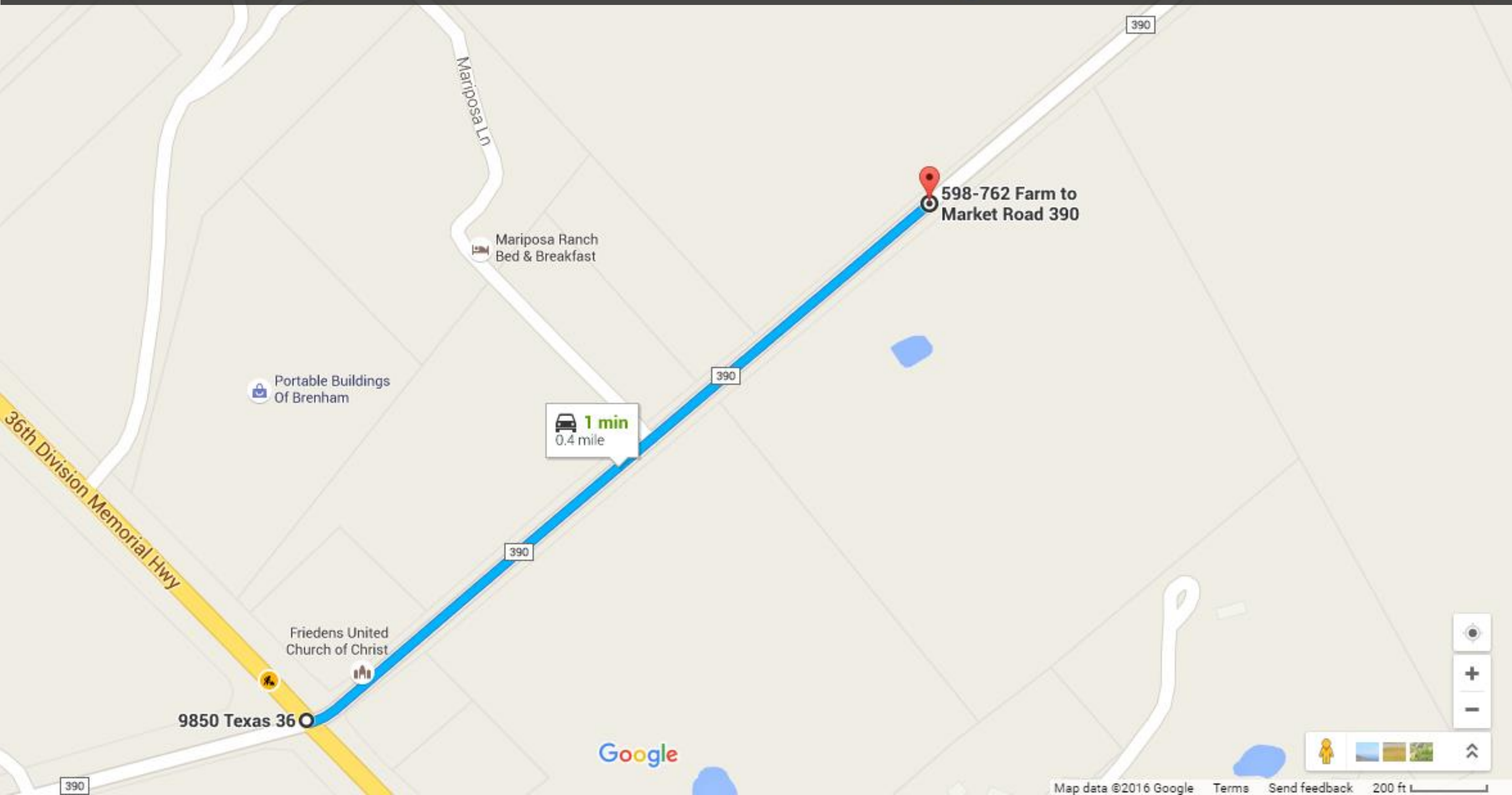


# The Independence Gay Hill Census Tract – low unemployment



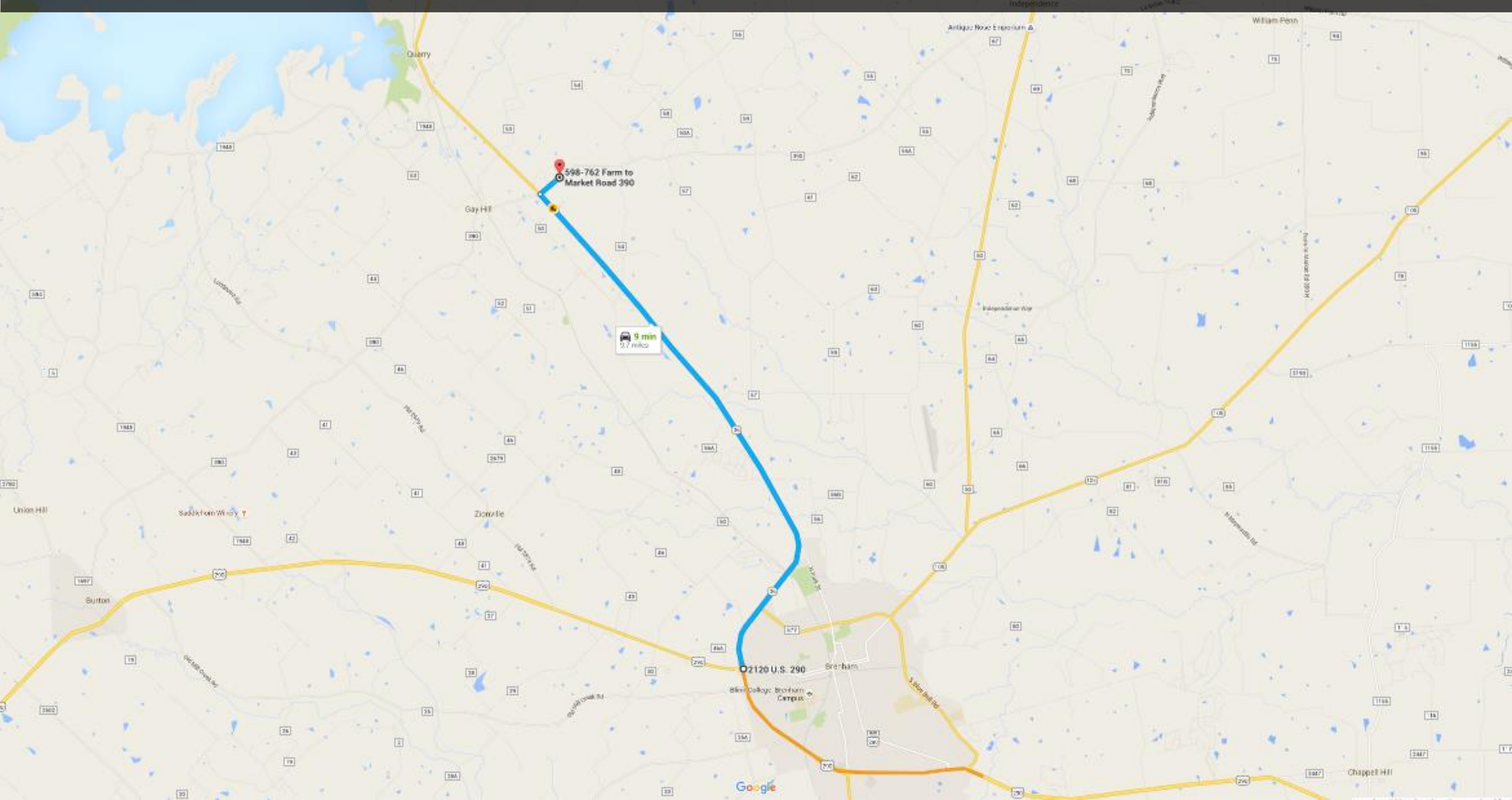


# 0.4 miles from TX-36 at FM-390 “the La Bahia Trail”



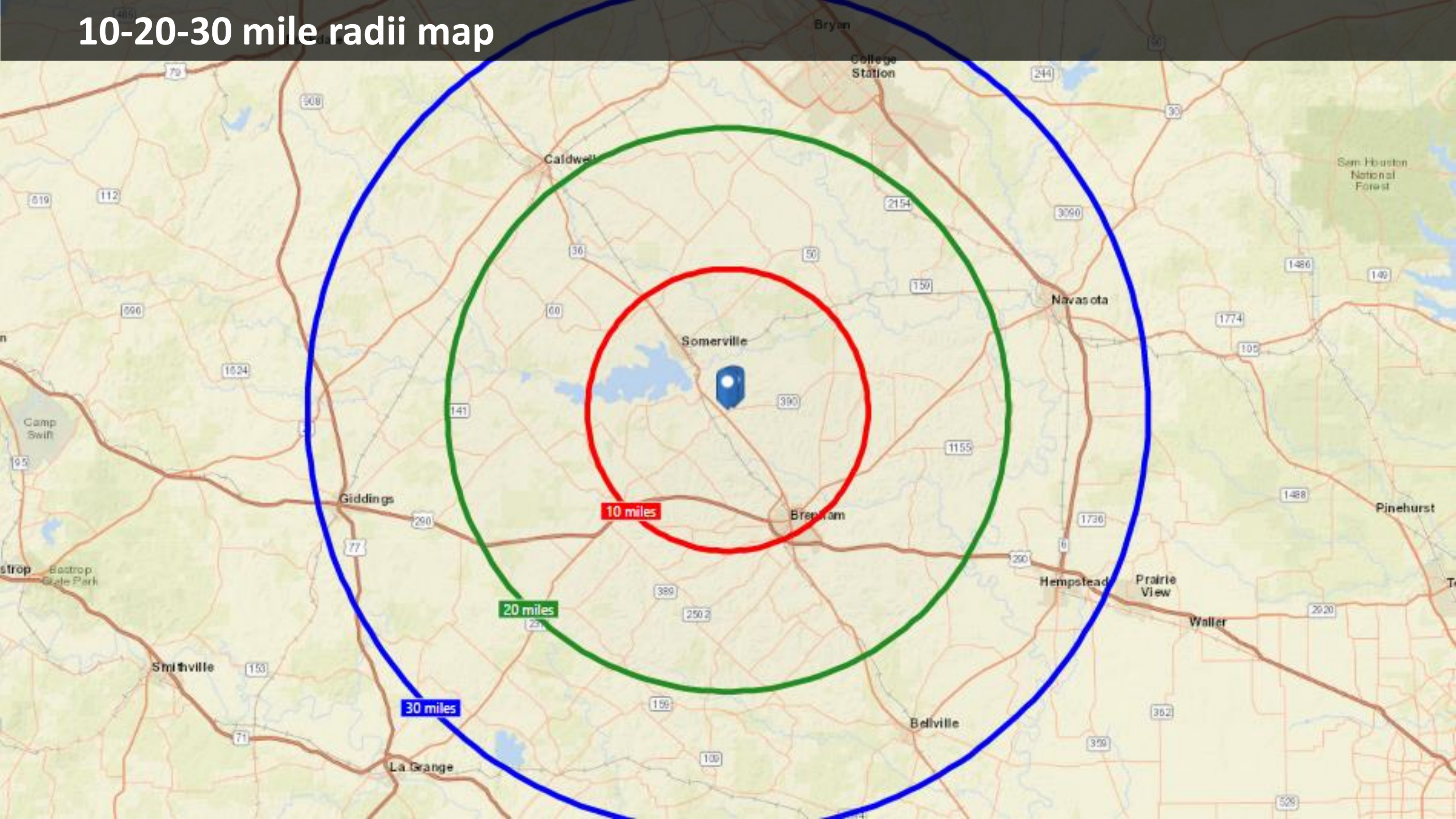


# 9 miles from TX-36 at US-290 westbound to Austin





# 10-20-30 mile radii map





# 30-60-90 mile radii map

