

## **STRUCTURES**

### **Dairy Barn & Holding Pen**

- 16,784 SF milking parlor, with milk load-out room, equipment room, office, restroom, holding pen and basement.
- Exterior walls are split-face concrete block on the south 8,724SF with curtain walls along the holding pen area (7,000 SF).
- Roof system is steel frame with steel panels.
- This structure houses a Double 40 parallel milking system with subway. Milk pit area is approximately 4,752 SF, holding pen 7,000 SF, milk load-out room 440 SF, and offices with 1,400 +/- SF and the remainder being restroom, breakroom, hallways. The basement area is approximately 10' X 106' (1,060 SF).

### **Free Stall Barns**

- Two free stall barns, each being approximately 108' X 644' (69,552 SF) with 18' concrete center feed lanes, concrete cow stands along each side of the feed lane, free stall sections and concrete access alleys along the inside of the outside walls. There is neck rail along each side of the feed lane and free stalls for approximately 840 head in each barn.
- The structures are steel framed with a pre-engineered steel roof system with open ridge ventilation and curtain side walls.
- The barns have overhead doors on their north and south ends for access and ventilation. The barns have ceiling mounted fans (44 in west barn, 48 in east barn) and misters along the feed lane with 16 polyurethane water troughs in each barn.
- One free stall barn being approximately 108' X 336' (36,288 SF) with attached calf barn area 21' X 223' (4,683 SF) and attached vet room area 15' X 24' (360 SF). 18' concrete center feed lane, concrete cow stands along each side of the feed lane and free stall sections. There are 137 - 5/10 size lock-ups along a portion of the feed lane with the remainder being neck rail. The barn contains free stalls for approximately 420 head

### **Enclosed Transfer Alleys**

- Metal frame with concrete floor, metal roofing and curtain side
- walls. The two connective alleyways are approximately 32' X 124', or 3,968 SF each for a total of 7,936 SF. Situated in both lanes are additional fencing, pens and working chutes.

### **Garage/Shop**

- Pre-engineered type metal garage/shop 24' X 36' (864 SF) with concrete floor, metal panel exterior walls and roof, 12' overhead door and walk door

### **Manure Drying Building**

- East of the east free stall barn is a 40' X 60' (2,400 SF) manure drying building.
- The manure is processed in this facility and utilized for bedding material in the free stall barns. The building is of pre-engineered type construction with metal frame, metal panel walls and metal roofing.
- Approximately 800 SF on the east side contains 8' concrete stem walls.
- The building has two, 12' wide overhead doors on the north side and a walk in door on the west side.
- The building is insulated and has a wall mounted heater

### **Commodity Barn**

- One - 40' x 150' (6,000 SF) commodity barn with 6 - 15' wide bays for commodity storage and 2 - 30' bays for hay storage. Attached to the north end of the barn is a 20' X 40' (800 SF) covered area for hay storage and load-out. There is approximately 17,200 SF of concrete apron east of the barn.
- The building is steel framed with a pre-engineered, single slope steel roof system. The structure contains 8 foot concrete exterior stem walls with metal above and metal roofing, and 8' concrete partition walls open above to the roof.

### **Bunks**

- Four bunks have concrete floors and 12' concrete stem walls on three sides. The silo's are approximately 66' X 250', 70' X 250', 66' X 171', and a large silo 140' X 250'.

### **MILKING EQUIPMENT**

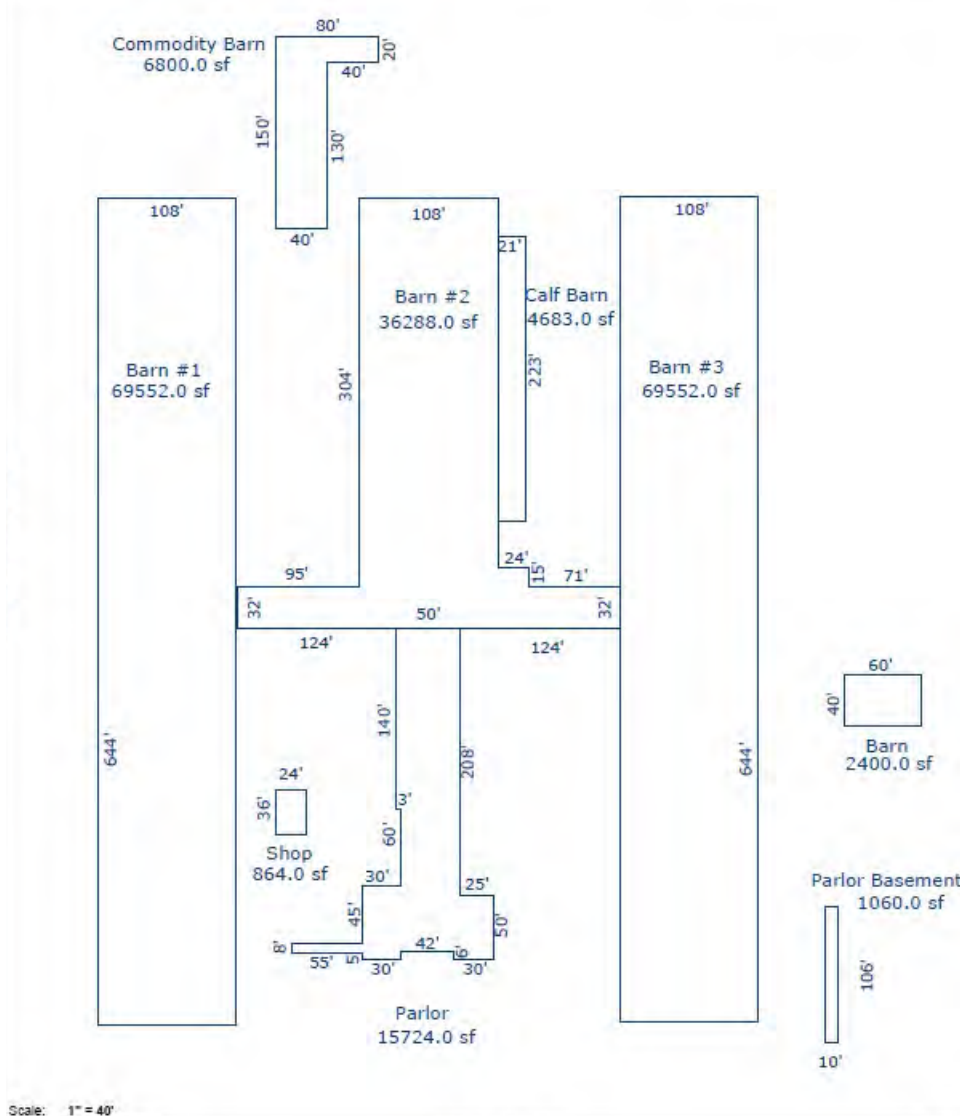
- DeLaval Double 40 parallel style milking system. Equipment includes 80 Becomilking units, GEA plate cooler (S/N 12730-51), Polar air compressor, 2 - Curtis air compressors, 2 - DeLaval vacuum pumps, Kleen-Flo pulsation controllers, 4 - Ruud 100 gallon water heaters, 2 - DeLaval ERS water heaters, Yukon Snap chiller, Caterpillar 380 KV backup generator, Blue Diamond Usher HRS automatic crowd gate in holding pen, Dexter industrial washing machine and dryer, and a Maytag washing machine. There are no milk tanks as milk is direct loaded into tankers via connections in the load-out section of the parlor.

### **ASSOCIATED EQUIP / SITE IMPROVEMENTS**

- 1 10' x 80' B-Tech 120,000 lb truck scale, 6' X 7' metal scale house, 2 water wells with 5 HP pumps, septic system with leach field, 90' X 300' concrete manure stacking, drying and settling area, GEA manure press with three rollers, manure conveyor system, two concrete manure/slurry collection pits with pumps

## **LAGOONS**

- 3 wastewater lagoons - 3.2 acre feet, 10.271 acre feet and 14.657 acre feet
- Maximum Operating Level(MOL) – 28,1625,380
- Maximum Dike Level(MDL) – 30,071,702



## EQUIPMENT

1. 2011 Claas 980, 1,168 hrs\*
2. 2011 10-row silage chopper
3. 2011 Claas Windrow 10ft head
4. 2011 Deutz Fahr M 650 Tractor, 16,606 hrs\*
5. Triolet Mixer 1400 cu. Ft.
6. 2011 CAT 930H Wheel Loader, 16,183 hrs\*
7. 1997 Freightliner FL 70 Sand Slinger

\*All hours as of 5/25/2016

## **HERD**

- 1,187 cows as of May 25, 2016
- Production: 84lb/day\*
- Butterfat: 3.9%\*
- Protein: 3.2%\*
- SCC: 233,000\*

\*April Average