

# LAND FOR SALE

## Logan County Pivot



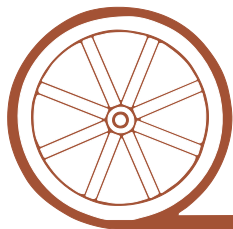
- Location:** 3 miles west, 4 miles south of Stapleton, Nebraska. Access west off US #83 via Road 20, then 1/2 mile north on Avenue 90.
- Legal Description:** Part of NE1/4 except a surveyed tract in Section 29-T17N-R28W of the 6th P.M., Logan County.
- Acres:** 139 tax assessed acres
- Taxes:** 2015 real estate taxes payable in 2016 - \$4,032
- Land Use:** The farm includes 108 acres pivot irrigated cropland, balance in dryland/rangeland corners.
- FSA Info:** Located in the Upper Loup NRD, with 108 Certified Irrigated Acres, Well Registration G-120375, drilled in 2003 with 290 foot well depth, 160 foot pump depth, set at 900 GPM.
- Soils:** Excellent terrain and soils, with 81% Class II Hord & Holdrege silt loam.
- Improvements & Equipment:** 8 tower T&L hydraulic center pivot, 75 HP electric well motor, 15 HP electric motor for T&L Hydraulic pivot system.
- Price:** \$575,000
- Comments:** Planted to 2016 soybeans, owner to retain for fall harvest. Owner desires to lease farm for future years. Excellent soils & water with good access on county roads off US#83.
- Contact:** John Childears; Listing Agent 308-539-4450 or [john@agriaffiliates.com](mailto:john@agriaffiliates.com)  
Mike Polk, Jerry Weaver, Chase Dodson, Tony Eggleston, Bruce Dodson

**Agri Affiliates—Providing Farm, Ranch Real Estate Services**



John Childears,  
Listing Agent

*Offered Exclusively By:*

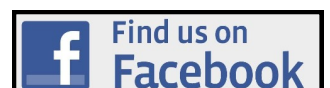


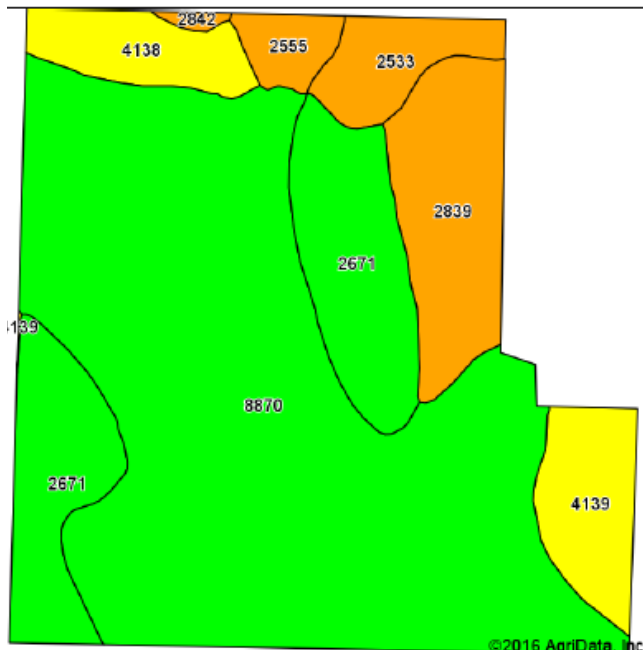
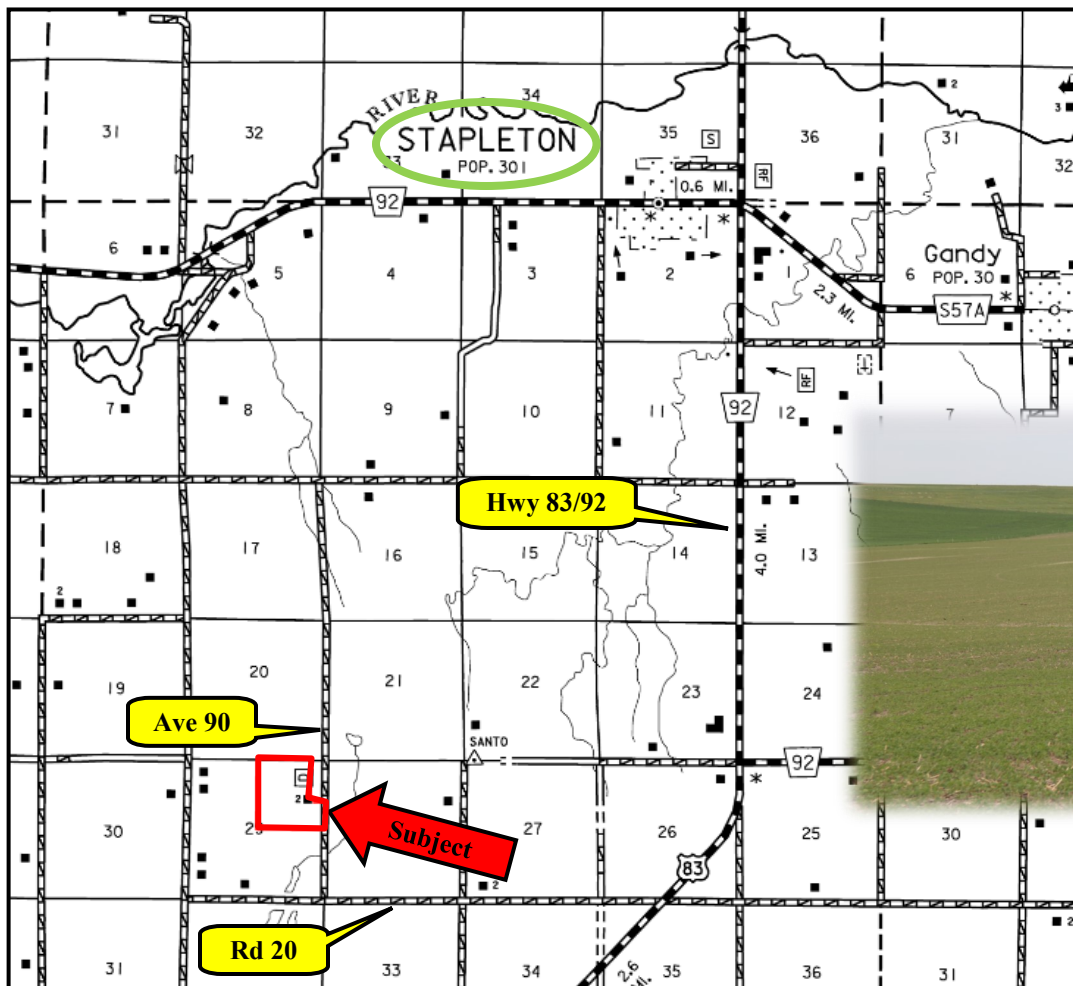
## AGRI AFFILIATES, INC.

*...Providing Farm - Ranch Real Estate Services...*

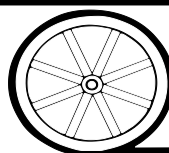
**NORTH PLATTE OFFICE**  
P.O. Box 1166  
I-80 & US Hwy 83  
North Platte, NE 69103  
[www.agriaffiliates.com](http://www.agriaffiliates.com)  
**(308) 534-9240**  
Fax (308) 534-9244

Information contained herein was obtained from sources deemed reliable. We have no reason to doubt the accuracy, but the information is not guaranteed. Prospective Buyers should verify all information. All maps provided by Agri Affiliates, Inc. are approximations only, to be used as a general guideline, and not intended as survey accurate. As with any agricultural land, this property may include noxious weeds. Agri Affiliates, Inc. and all agents are acting as Agent of the Seller.





Code	Soil Description	Acres	Percent of field	Non-Irr Class Legend	Non-Irr Class %c	Irr Class %c
8870	Hord silt loam, 1 to 3 percent slopes	82.32	69.8%		Ile	Ile
2671	Holdrege silt loam, 3 to 7 percent slopes, eroded	21.61	15.7%		Ile	Ile
2839	Uly-Holdrege silt loams, 11 to 17 percent slopes	12.50	9.1%		Vle	
4139	Holdrege silt loam, 7 to 11 percent slopes, severely eroded	7.23	5.3%		IVe	IVe
4138	Holdrege silt loam, 7 to 11 percent slopes	5.77	4.2%		IVe	IVe
2533	Coly silt loam, 11 to 30 percent slopes	5.15	3.7%		Vle	
2555	Coly-Uly silt loams, 11 to 17 percent slopes, eroded	2.58	1.9%		Vle	
2842	Uly-Sully silt loams, 17 to 30 percent slopes, eroded	0.41	0.3%		Vle	



**AGRI AFFILIATES, INC.**  
*...Providing Farm - Ranch Real Estate Services...*