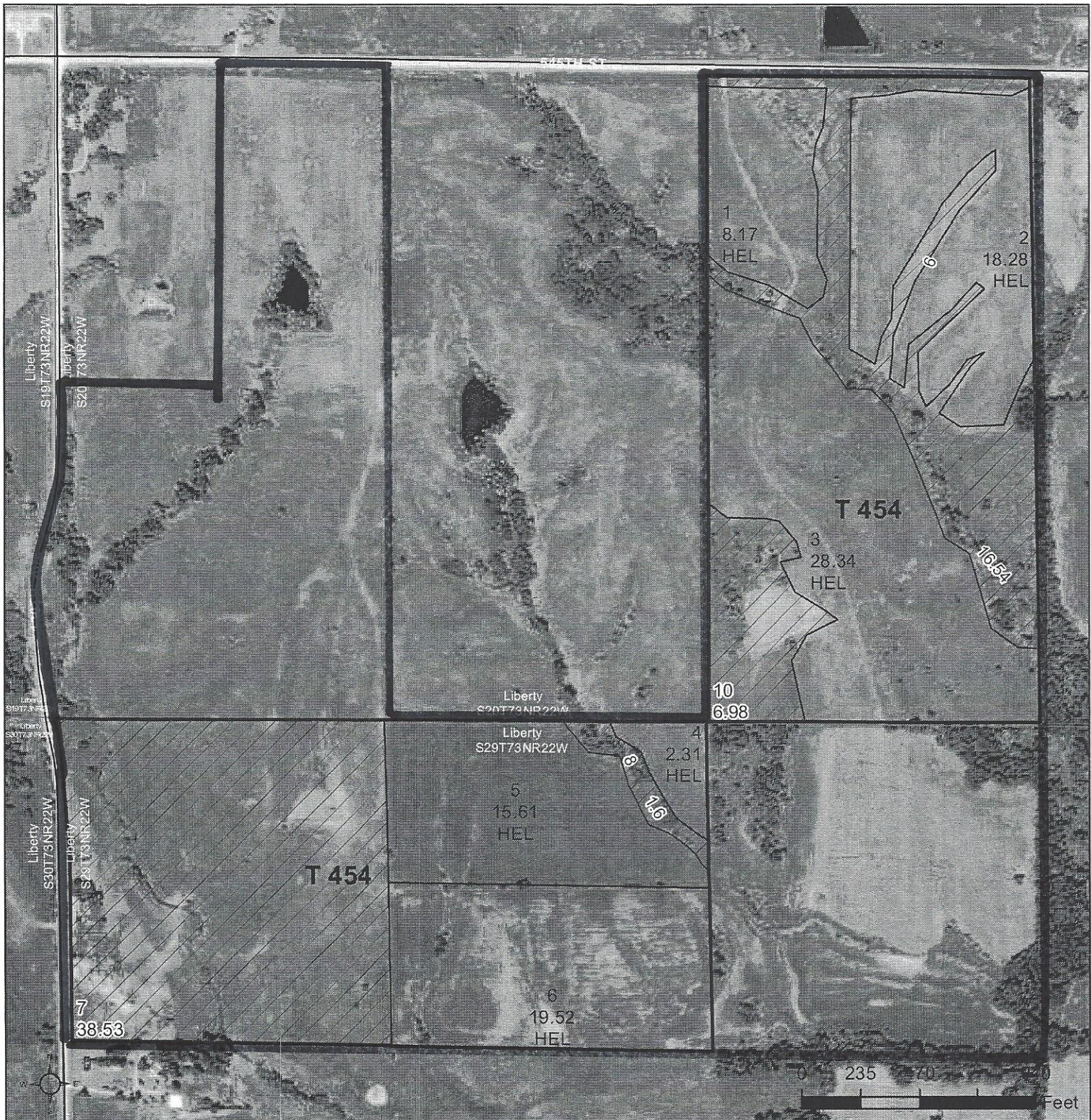




United States  
Department of  
Agriculture

## Lucas County, Iowa



### Common Land Unit

- Cropland
- Non-cropland
- Conservation Reserve Program

### Wetland Determination Identifiers

- Restricted Use
- Limited Restrictions
- Exempt from Conservation Compliance Provisions

- Tract Boundary
- Section Line

The 2 following FSA aeriels  
are of the SE 1/4 and the NW  
60 acres.

2014 Program Year

Map Created December 16, 2013

Farm 2566  
Tract 454

United States Department of Agriculture (USDA) Farm Service Agency (FSA) maps are for FSA Program administration only. This map does not represent a legal survey or reflect actual ownership; rather it depicts the information provided directly from the producer and/or National Agricultural Imagery Program (NAIP) imagery. The producer accepts the data 'as is' and assumes all risks associated with its use. USDA-FSA assumes no responsibility for actual or consequential damage incurred as a result of any user's reliance on this data outside FSA Programs. Wetland identifiers do not represent the size, shape, or specific determination of the area. Refer to your original determination (CPA-026 and attached maps) for exact boundaries and determinations or contact USDA Natural Resources Conservation Service (NRCS).





United States  
Department of  
Agriculture

## Lucas County, Iowa



### Common Land Unit

Cropland / / Non-cropland

Conservation Reserve Program

### Wetland Determination Identifiers

● Restricted Use

▽ Limited Restrictions

■ Exempt from Conservation  
Compliance Provisions

Tract Boundary Section Line

2014 Program Year

Map Created December 16, 2013

Farm 2566

Tract 4798

United States Department of Agriculture (USDA) Farm Service Agency (FSA) maps are for FSA Program administration only. This map does not represent a legal survey or reflect actual ownership; rather it depicts the information provided directly from the producer and/or National Agricultural Imagery Program (NAIP) imagery. The producer accepts the data 'as is' and assumes all risks associated with its use. USDA-FSA assumes no responsibility for actual or consequential damage incurred as a result of any user's reliance on this data outside FSA Programs. Wetland identifiers do not represent the size, shape, or specific determination of the area. Refer to your original determination (CPA-026 and attached maps) for exact boundaries and determinations or contact USDA Natural Resources Conservation Service (NRCS).





United States  
Department of  
Agriculture

# Lucas County, Iowa



## Common Land Unit

Cropland / / Non-cropland

Conservation Reserve Program

## Wetland Determination Identifiers

● Restricted Use

▽ Limited Restrictions

■ Exempt from Conservation  
Compliance Provisions

Tract Boundary Section Line

2014 Program Year

Map Created December 16, 2013

**Farm 2566**  
**Tract 466**

United States Department of Agriculture (USDA) Farm Service Agency (FSA) maps are for FSA Program administration only. This map does not represent a legal survey or reflect actual ownership; rather it depicts the information provided directly from the producer and/or National Agricultural Imagery Program (NAIP) imagery. The producer accepts the data 'as is' and assumes all risks associated with its use. USDA-FSA assumes no responsibility for actual or consequential damage incurred as a result of any user's reliance on this data outside FSA Programs. Wetland identifiers do not represent the size, shape, or specific determination of the area. Refer to your original determination (CPA-026 and attached maps) for exact boundaries and determinations or contact USDA Natural Resources Conservation Service (NRCS).