



## Real Estate Specialists

*Setting the trend for how Real Estate is sold in the Midwest.*

**www.BarnesRealty.com**

18156 Hwy 59  
Mound City, MO 64470  
(660) 442-3177

1711 Oregon  
Hiawatha, KS 66434  
(785) 742-4580

1708 Prairie View Rd, Suite B  
Platte City, MO 64079  
(816) 219-3010

### ***10.3 Acres, Brown County, KS***

Looking for that perfect spot in the country to build your new home? We have the perfect place for you! This 10 acre spot features wooded areas and abundant wildlife! Imagine sitting on your deck and watching the deer walk by! Don't wait – this property will **go fast!** Call me today to take a look – you will fall in love!

#### **LOCATION:**

This property is located right outside of Hiawatha, right off the blacktop road. It is only two hours from Kansas City and about an hour from Topeka.

#### **PRICE:**

\$75,000.00

#### **IMPROVEMENTS:**

The property is unimproved

#### **TAXES/TAXABLE ACRES:**

2015 taxes were \$55.72 on 10.3 taxable acres.

#### **LISTING AGENT:**

Cheryl Lippold  
(785) 741-2381 or [cheryl@barnesrealty.com](mailto:cheryl@barnesrealty.com)



#### **BROKER PARTICIPATION:**

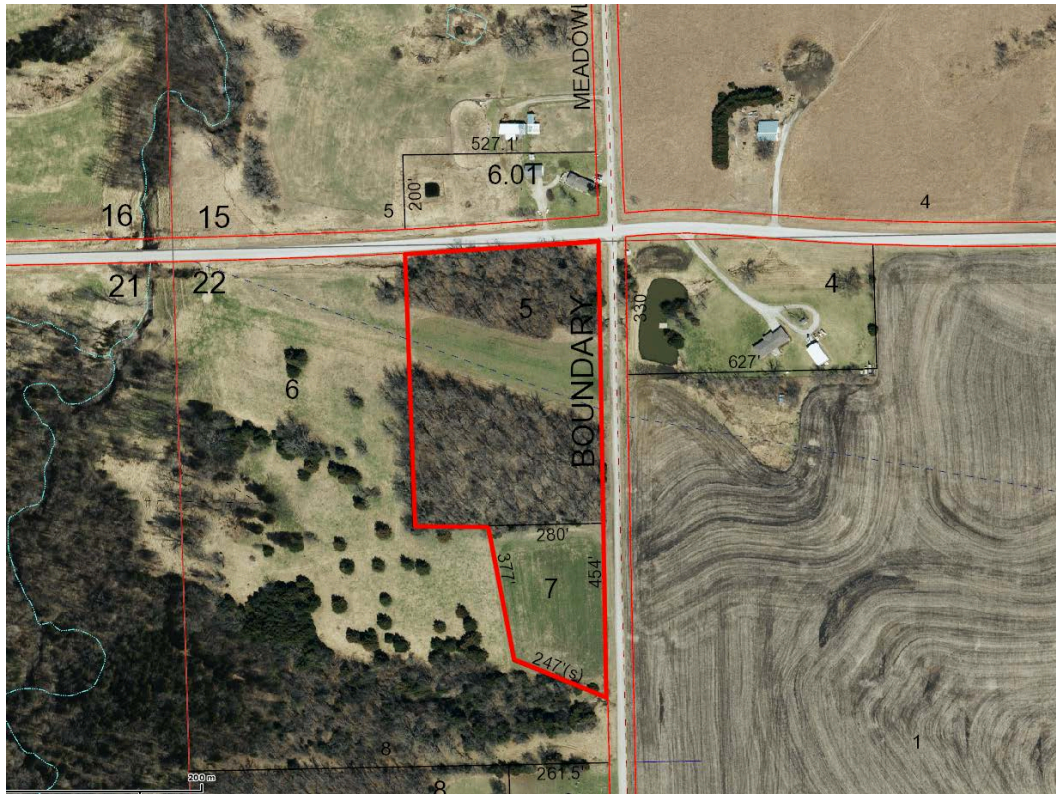
Barnes Realty Company, as listing broker, will gladly and fully cooperate with most licensed real estate brokers to obtain a sale of the property on terms satisfactory to the current owners.

*Setting the trend for how Real Estate is sold in the Midwest.*

This information is thought to be accurate; however it is subject to verification and no liability for error and omissions is assumed. Barnes Realty has made every effort to present accurate information on the property presented. Most of the information comes from outside sources: County/Government/Seller and human error can occur. It's the buyer's responsibility to satisfy himself with the information presented and to determine the information to be true and accurate and the property to be suited for his intended use. The listing may be withdrawn with or without approval. The seller further reserves the right to reject any and all offers. All inquiries, inspections, appointments, and offers must be sent through:

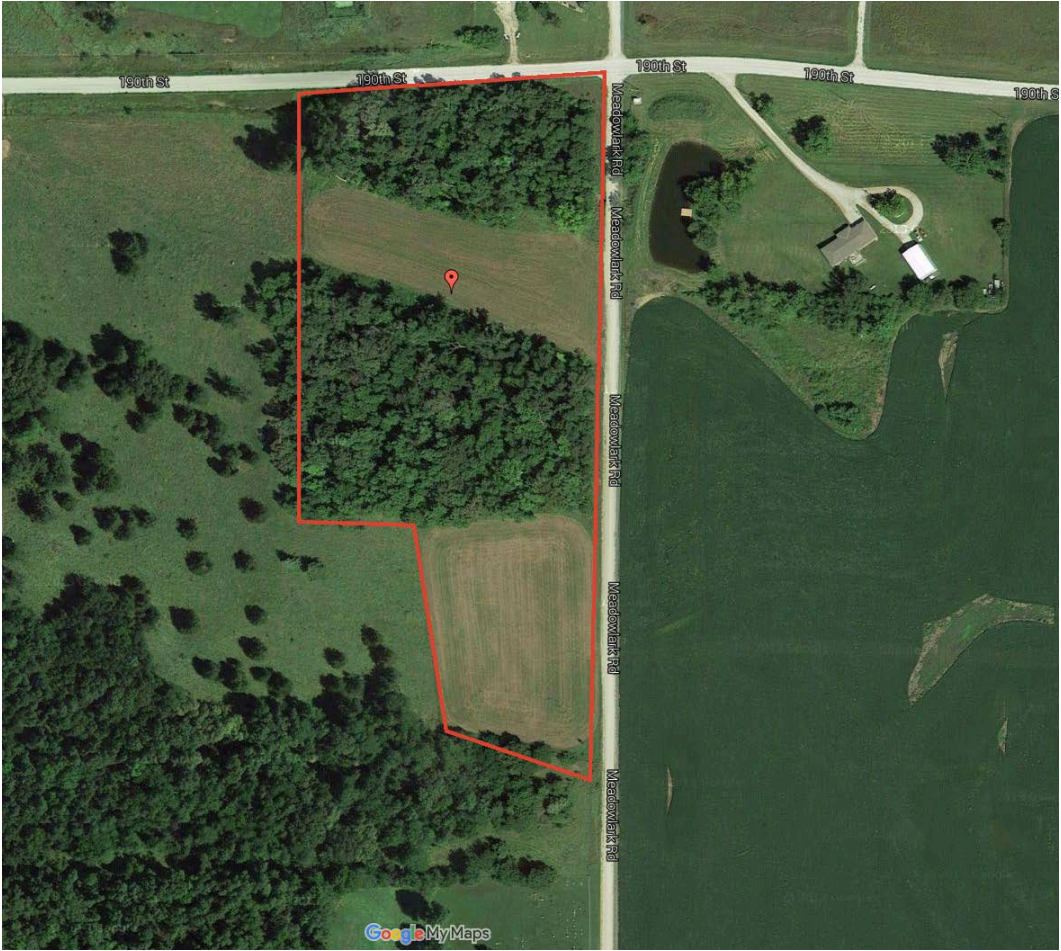
Rick Barnes, BARNES REALTY COMPANY, 18156 HWY 59, MOUND CITY, MO 64470 PHONE NUMBER: 1-660-442-3177

***10.3 Acres, Brown County, KS  
Tax Map***

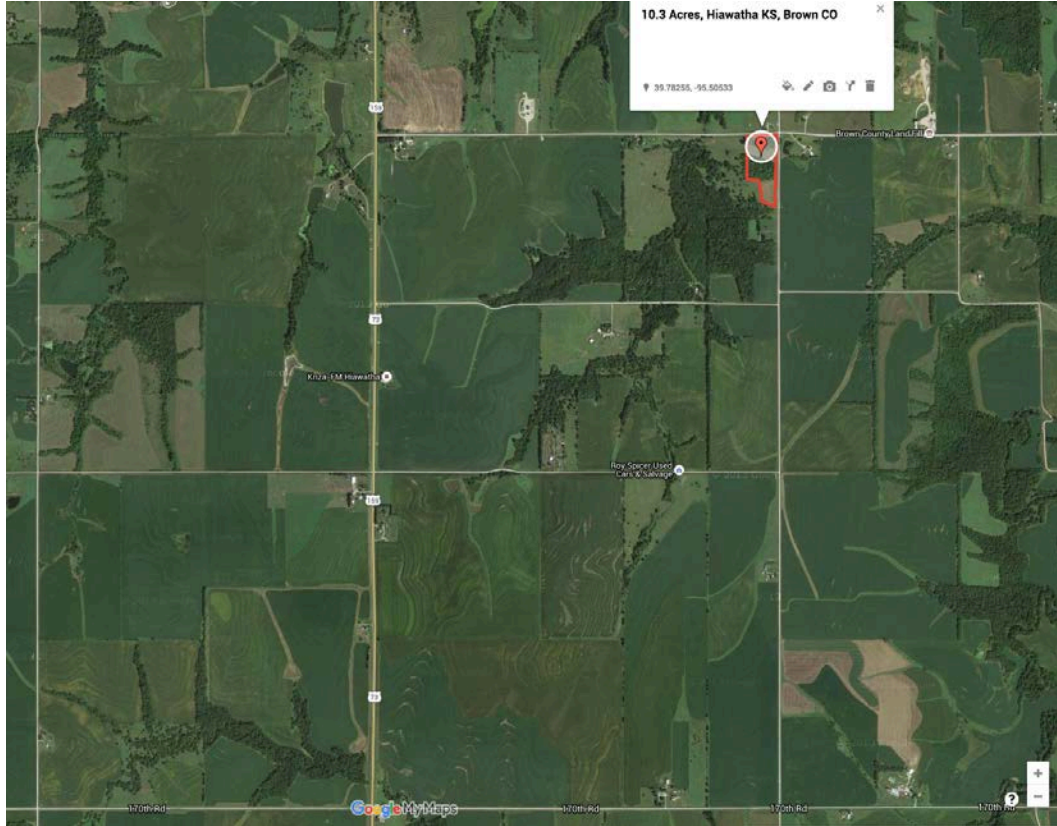




*10.3 Acres, Brown County, KS*  
*Google Aerial*



***10.3 Acres, Brown County, KS***  
***General Location Map***



***10.3 Acres, Brown County, KS***  
***Driving Map***

