



117.85 +/- Acres / Hidalgo County

Listing  
Signature Properties

NO Minerals

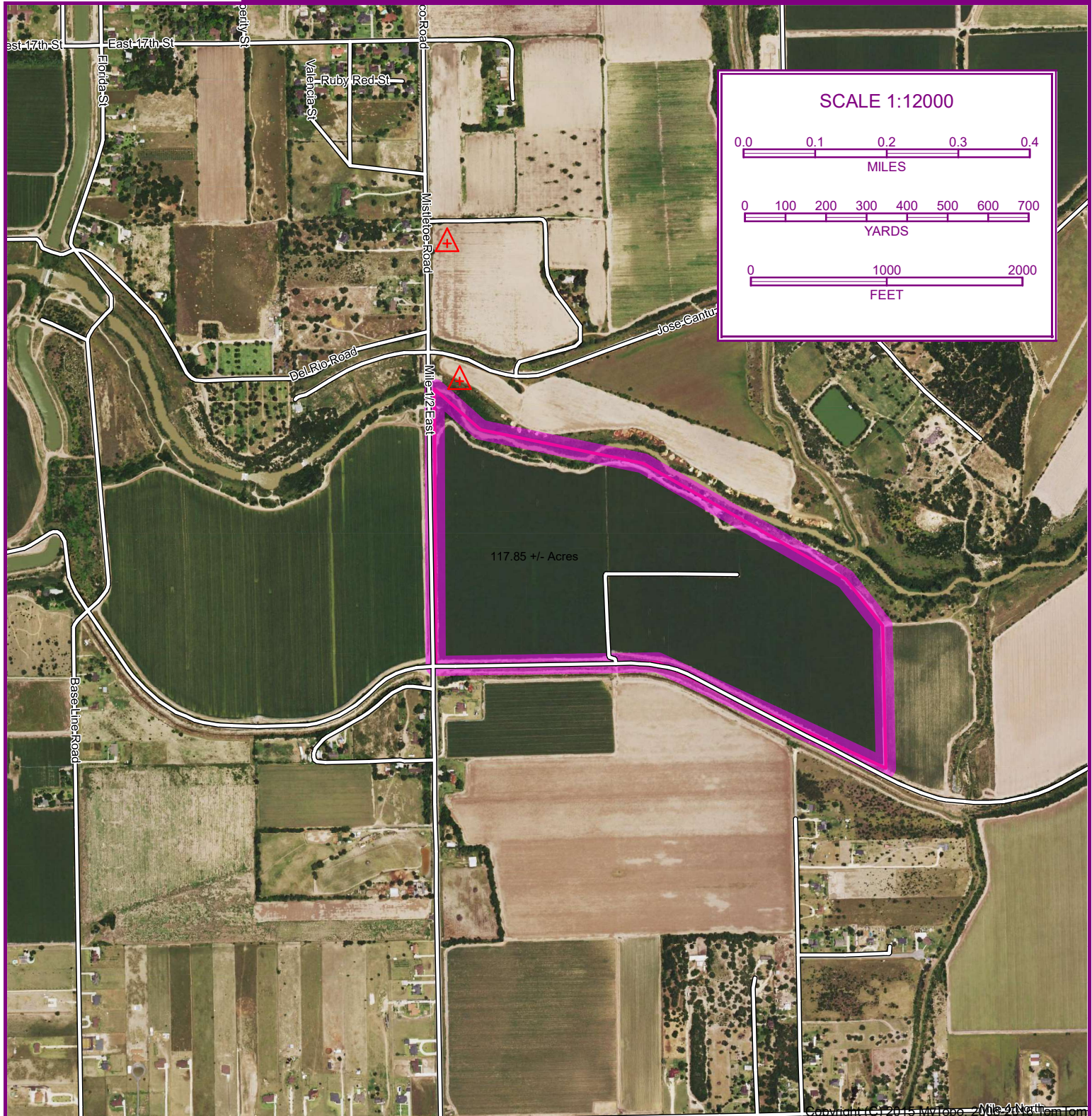
J.C. Lowe, ALC

Office: 956.630.3100

Cell: 956.821.0547

JC@Loweinvestment.com

www.RGVSP.com



DISCLAIMER: The information contained herein is as obtained by this broker from sellers, owners, or other sources. This information is considered reliable, neither this broker nor owners make any guarantee, warranty or representation as to correctness of any data or descriptions and the accuracy of such statements. The correctness and / or accuracy of any and all statements should be determined through independent investigation made by the prospective purchaser. Any offer for sale is subject to prior sale, errors and omissions, change of price, terms or other conditions or withdrawal from sale in whole or in part, by seller without notice and at the sole discretion of seller. Readers are urged to form their own independent conclusions and evaluations in consultation with legal counsel, accountants, and/or investment advisors concerning and all material contained herein.