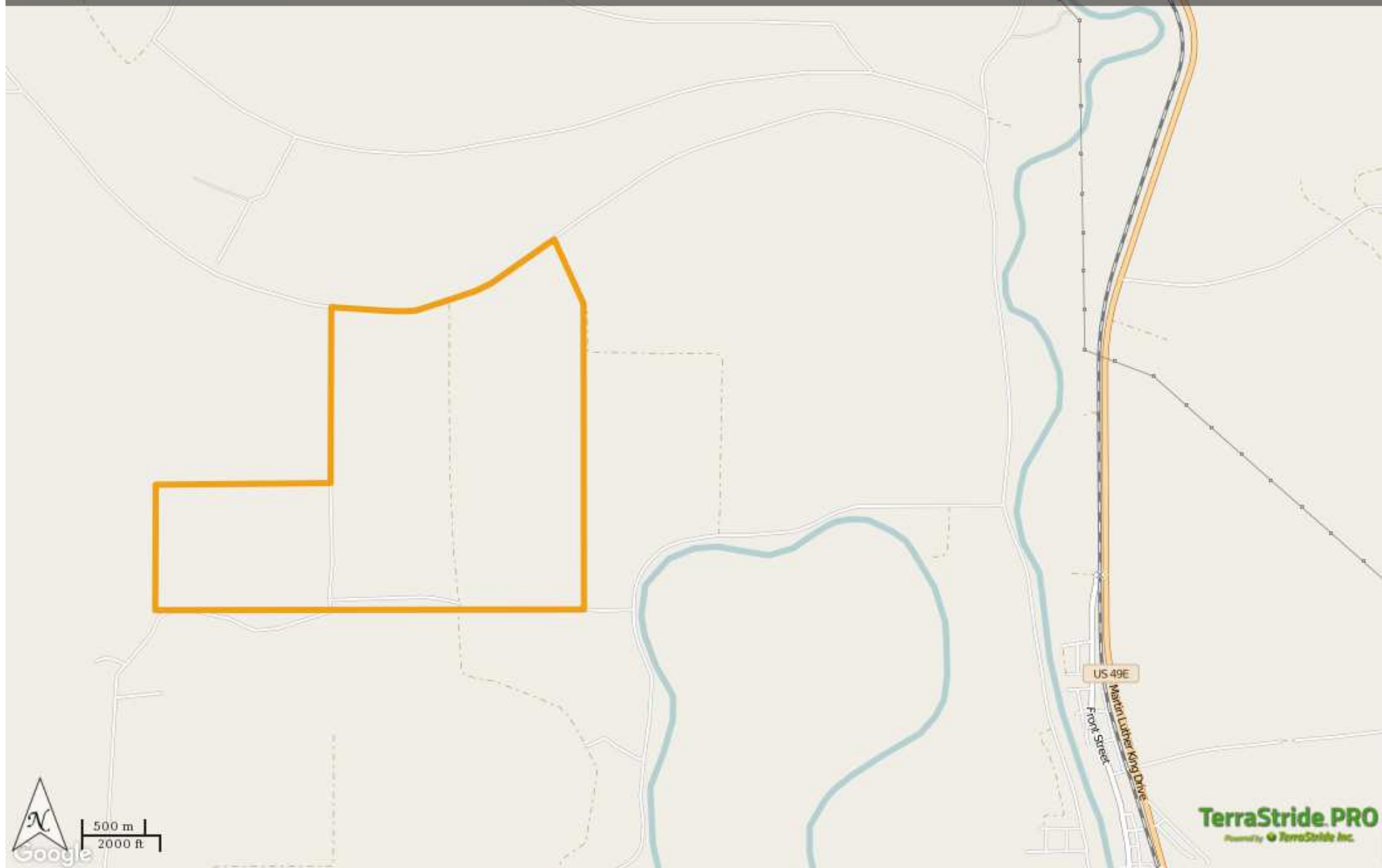




MS - Holmes Love 1025 acres  
+/-  
1029.35 acres  
\$6,156,000

Brown Realty Co  
Mike Watson  
(318) 547-7386  
mwatson@brownrealtyco.com  
<http://www.brownrealtyco.com/>



# Property Report—MS - Holmes Love 1025 acres +/-

## Legend

Feature	Icon	Colors
Boundary		

## Description

This is an excellent farm which is 90% irrigated. The farm has 4 Valley center pivots with 4 attached power units and one electric well. Rent is \$225 per acre for the cropland. There is a majority of Class 1 soils with some Class 2. The ground is relatively flat and lays just south of Horseshoe lake Rd. It is truly a showplace of a farm and has mostly been planted in cotton. The property is known for high producing yields. Brown Realty Co Jerry Brown, Broker 2189 Hwy 425 Rayville, LA 71269 318-728-9544

DISCLAIMER: The information contained herein is as obtained by this broker from sellers, owners, or other sources. This information is considered reliable, neither this broker nor owners make any guarantee, warranty or representation as to correctness of any data or descriptions and the accuracy of such statements. The correctness and / or accuracy of any and all statements should be determined through independent investigation made by the prospective purchaser. Any offer for sale is subject to prior sale, errors and omissions, change of price, terms or other conditions or withdrawal from sale

Generated on: March 28, 2016