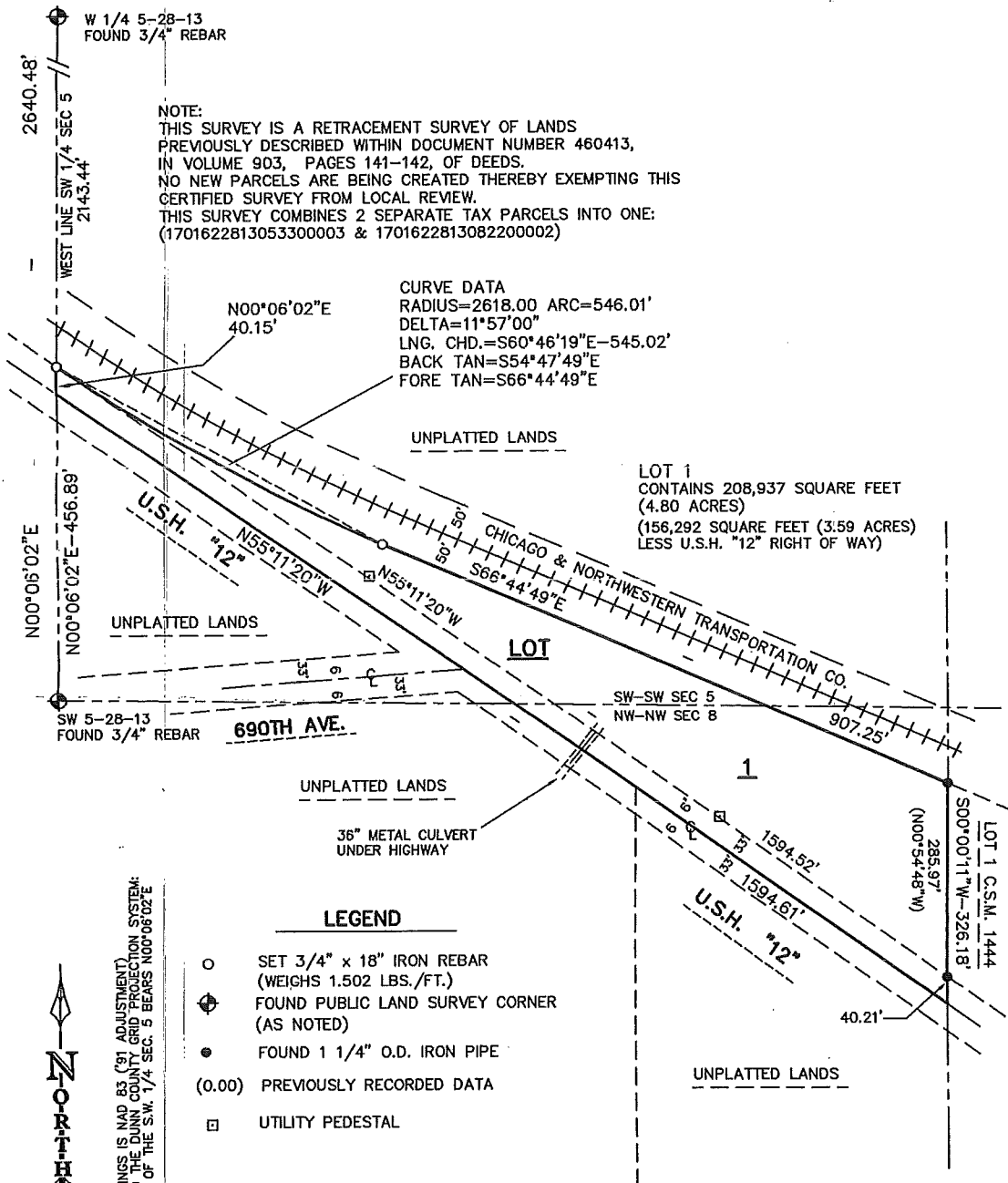


# PRELIMINARY CERTIFIED SURVEY MAP

BEING LANDS PREVIOUSLY DESCRIBED AS PART OF THE  
S.W. 1/4 OF THE S.W. 1/4 OF SECTION 5, AND PART OF THE  
N.W. 1/4 OF THE N.W. 1/4 OF SECTION 8, ALL IN T.28N., R.13W.,  
TOWN OF MENOMONIE, DUNN COUNTY, WISCONSIN.



BASIS OF BEARINGS IS NAD 83 (91 ADJUSTMENT)  
AS RELATED TO THE DUNN COUNTY GRID PROJECTION SYSTEM:  
THE WEST LINE OF THE S.W. 1/4 SEC. 5 BEARS N00°06'02"E

SHEET 1 OF 2

JOB # 13218

© KOCHAVER LAND SURVEYING 2013