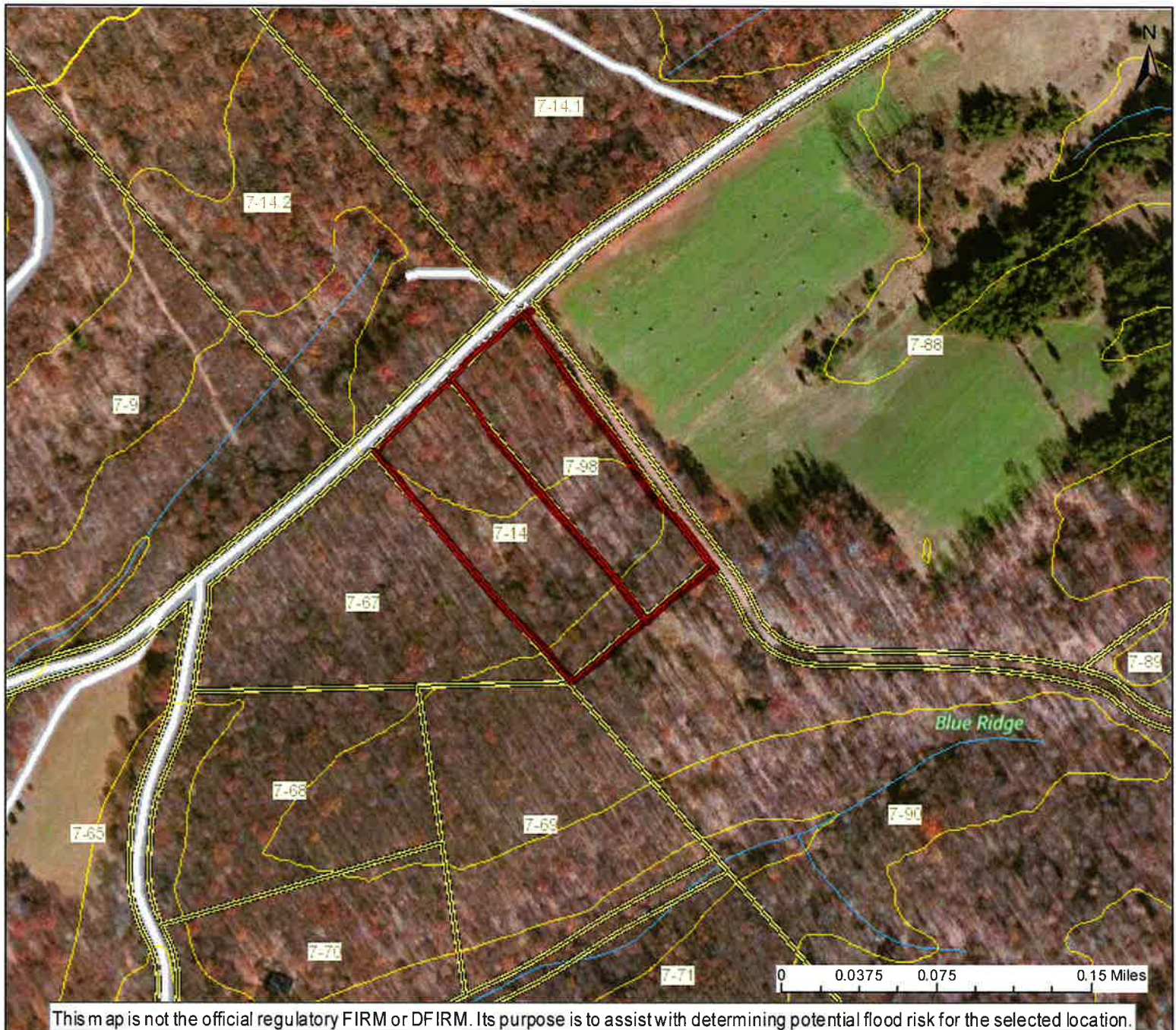




# crim building lots



## User Notes:

-  Flood Hazard Zone
-  Flood Point of Interest

### Disclaimer:

The online map is for use in administering the National Flood Insurance Program. It does not necessarily identify all areas subject to flooding, particularly from local drainage sources of small size. To obtain more detailed information in areas where Base Flood Elevations have been determined, users are encouraged to consult the latest Flood Profile data contained in the official flood insurance study. These studies are available online at [www.msc.fema.gov](http://www.msc.fema.gov).  
*WV Flood Tool (<http://www.MapWV.gov/flood>) is supported by FEMA, WV NFIP Office, and WV GIS Technical Center.*

Map created on December 14, 2015

### Flood Hazard Area:

Flood Hazard Area:

### FEMA Issued Flood Map:

### Watershed (HUC8):

### Elevation:

### Location (long, lat):

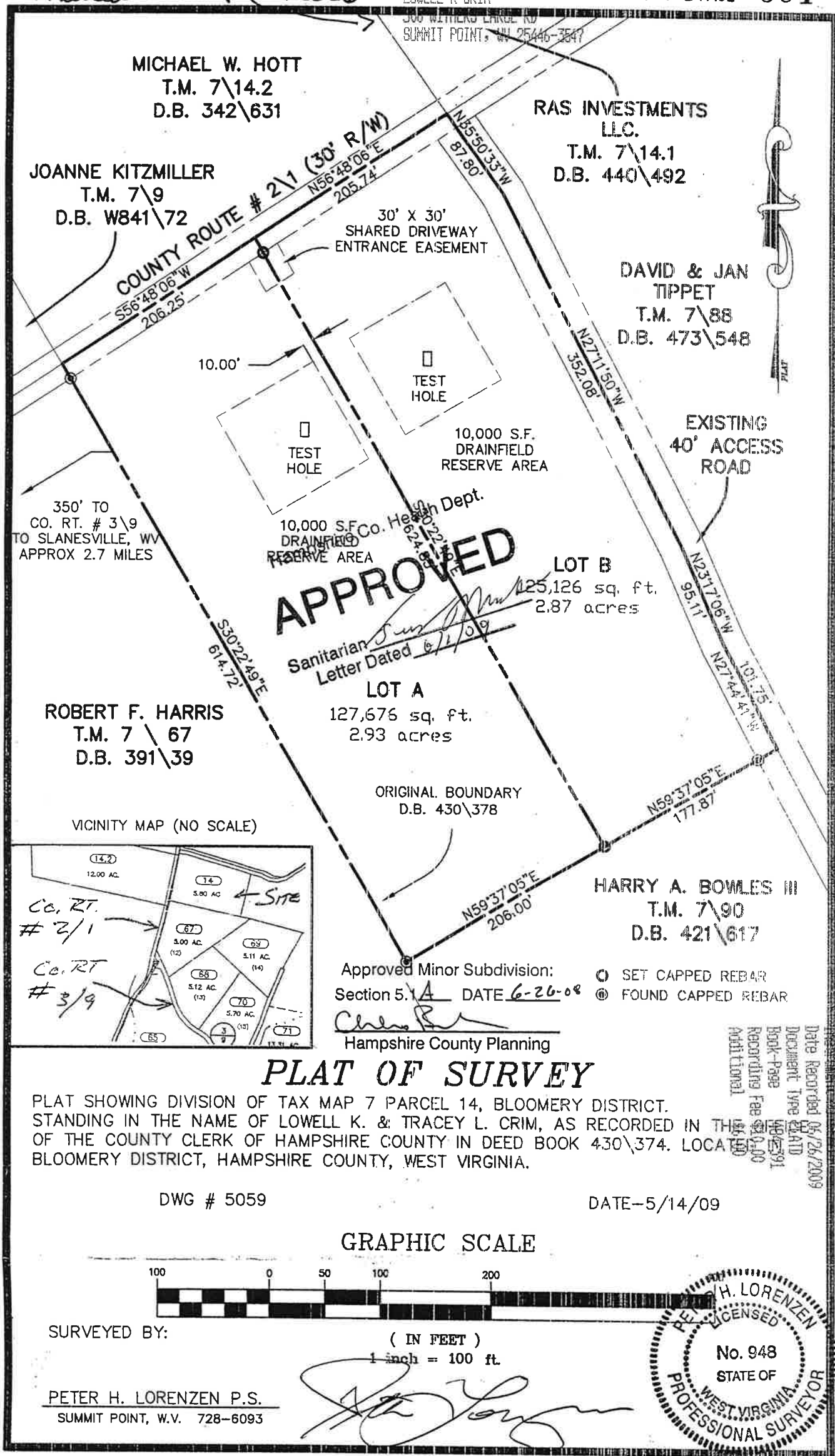
### Location (UTM 17N):

### Contacts:

### CRS Information:

### Parcel Number:





STATE OF WEST VIRGINIA, Hampshire County Commission Clerk's Office

6/26/09 9:39AM

The foregoing Instrument, together with the certificate of its acknowledgment, was this day presented in said office and admitted to record.

Teste

Sharon H. Link

Clerk.