

# John Day Valley Ranch



Wilburn Ranch Brokerage

[www.wilburnranchbrokerage.net](http://www.wilburnranchbrokerage.net)

[ranchbrokerage@yahoo.com](mailto:ranchbrokerage@yahoo.com)

541.421.5300



# John Day Valley Ranch

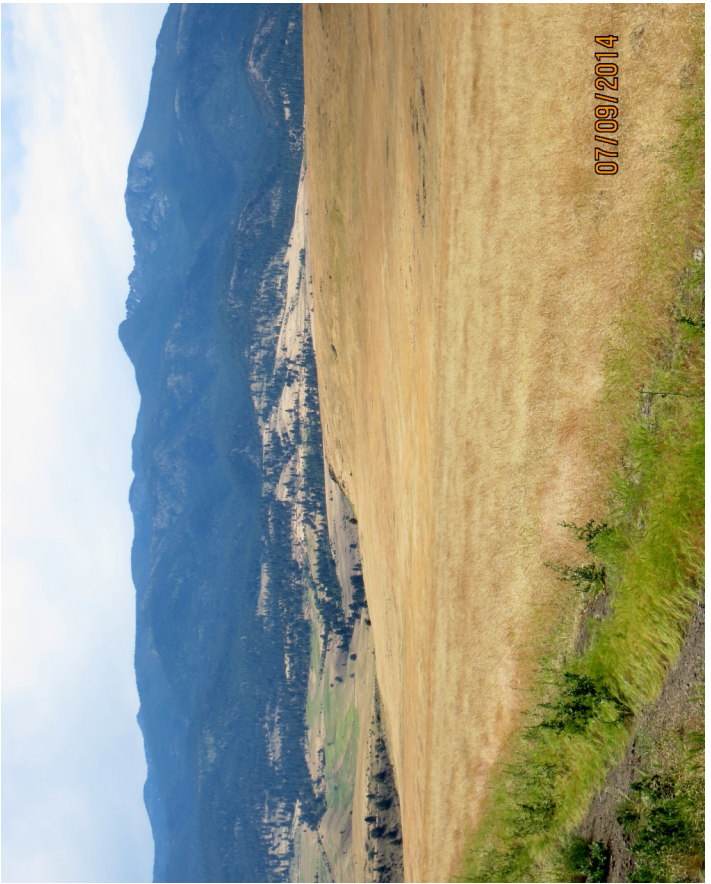
- ♦ Located in the John Day Valley of Eastern Oregon, John Day, Or.
- ♦ Approx. 4500 acres
- ♦ \$4.5m
- ♦ John Day River flows approx. 1.5 miles through it
- ♦ Early water rights, complete package available
- ♦ 605 acres flood irrigated meadows
- ♦ Owner states will run 250 pair, bulls, replacements inside, very easy to operate
- ♦ Usually puts up 1,000 tons of hay, depends on flexibility of grazing more cattle or cutting more hay--very, very flexible management
- ♦ Excellent ranch to winter stock....mild winters
- ♦ Both southern and northern exposures, early and late feed
- ♦ Mild winters, warm summers...best in Oregon!
- ♦ 3 homes, one remodeled recently and one built mid 80's
- ♦ corrals, calving barn, horse barns, shop
- ♦ 620 acres of managed timber
- ♦ Progressive juniper removal
- ♦ Good populations of elk and deer
- ♦ Easy access to John Day
- ♦ Conservative county.. Grant
- ♦ 5 Star ranch, call and I'll explain, Rich, 541-421-5300

Wilburn Ranch Brokerage

## Wilburn Ranch Brokerage

All information is deemed reliable and correct from the owners and representatives. No guarantees are made or implied. A prospective purchaser is expected to carefully investigate and verify the above information as well as all matters affecting the property.

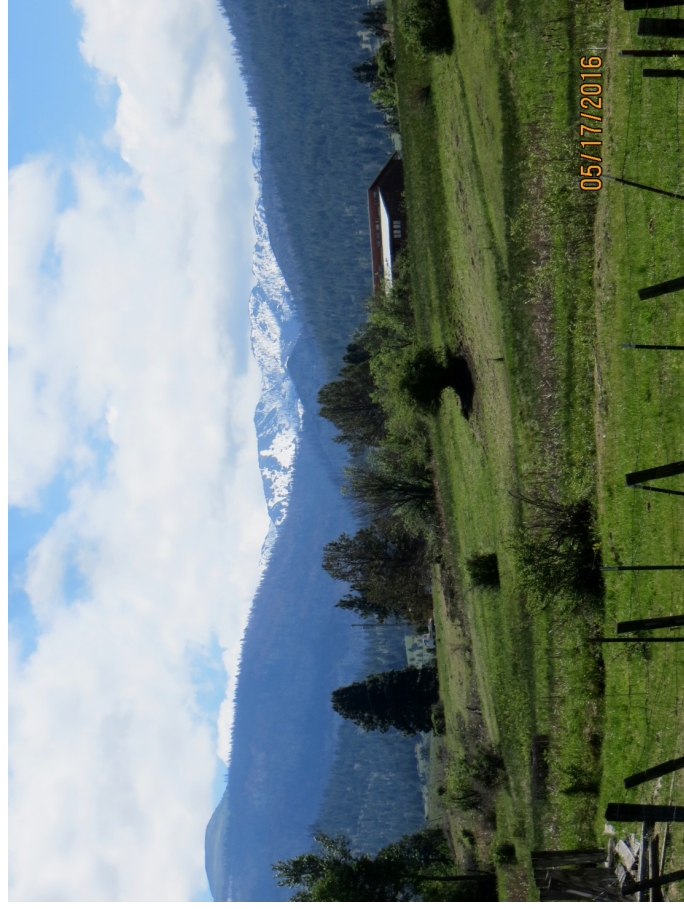




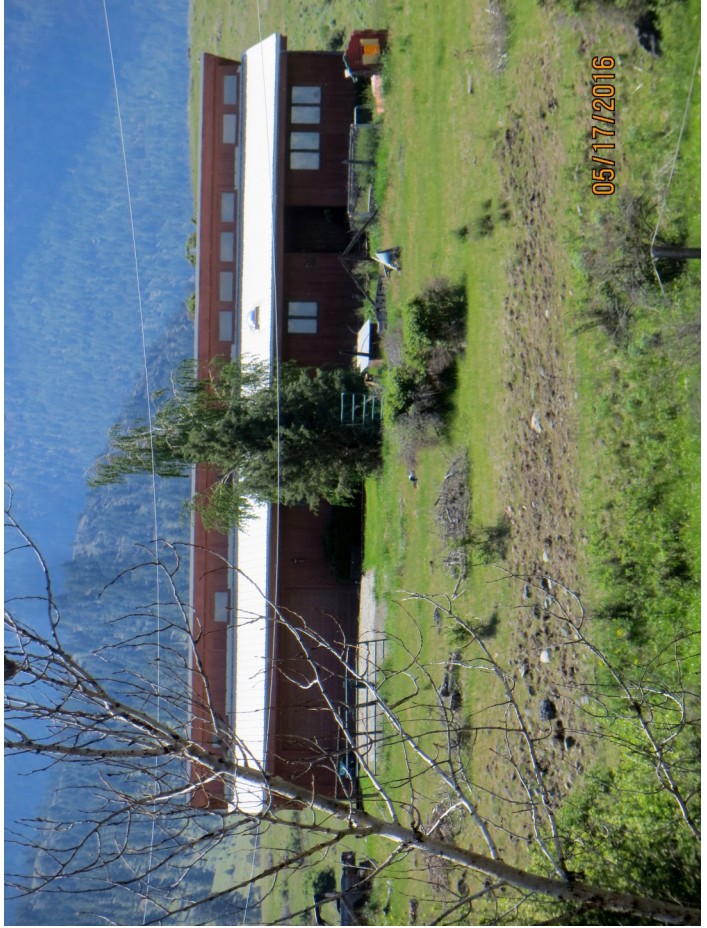








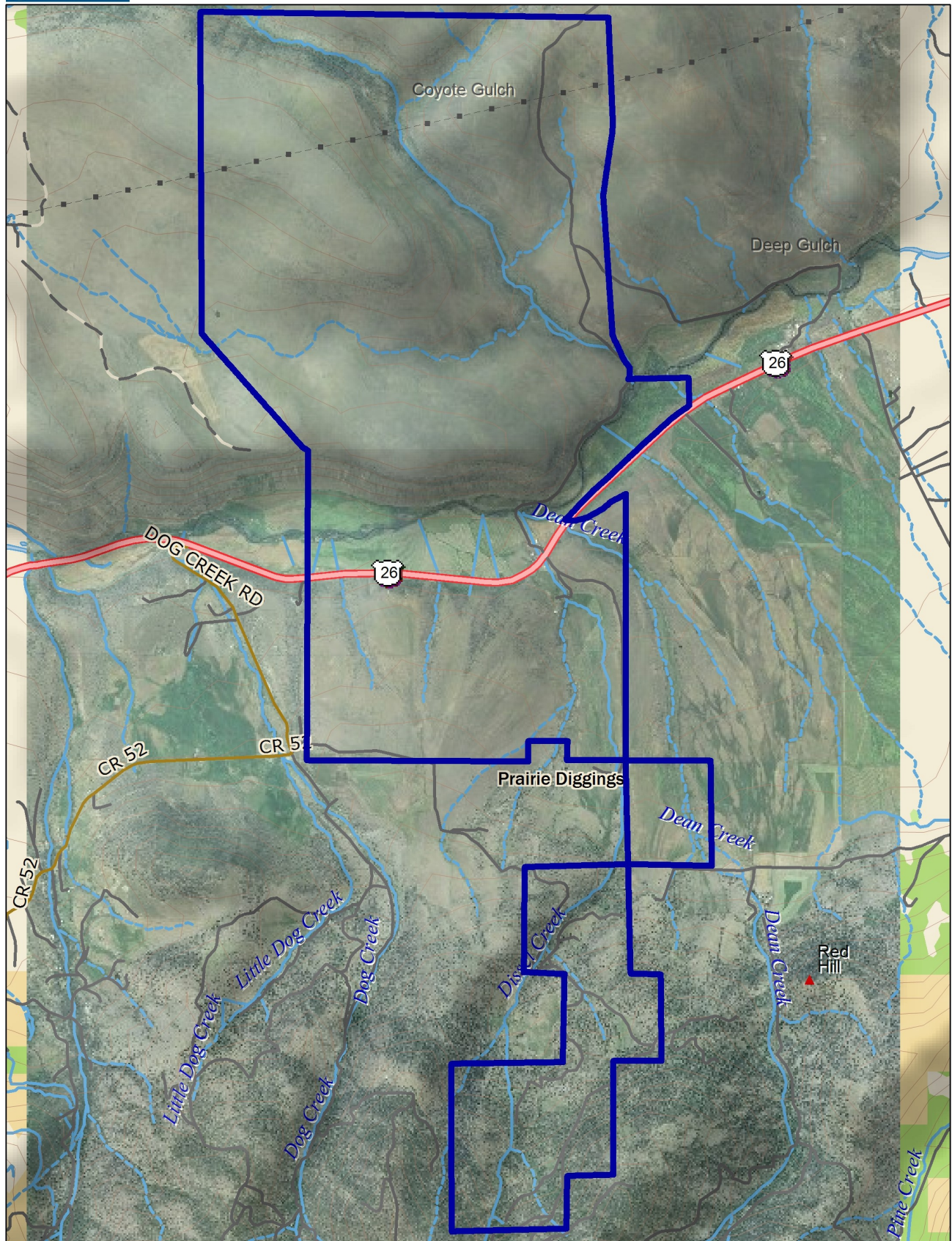








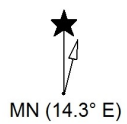




Data use subject to license.

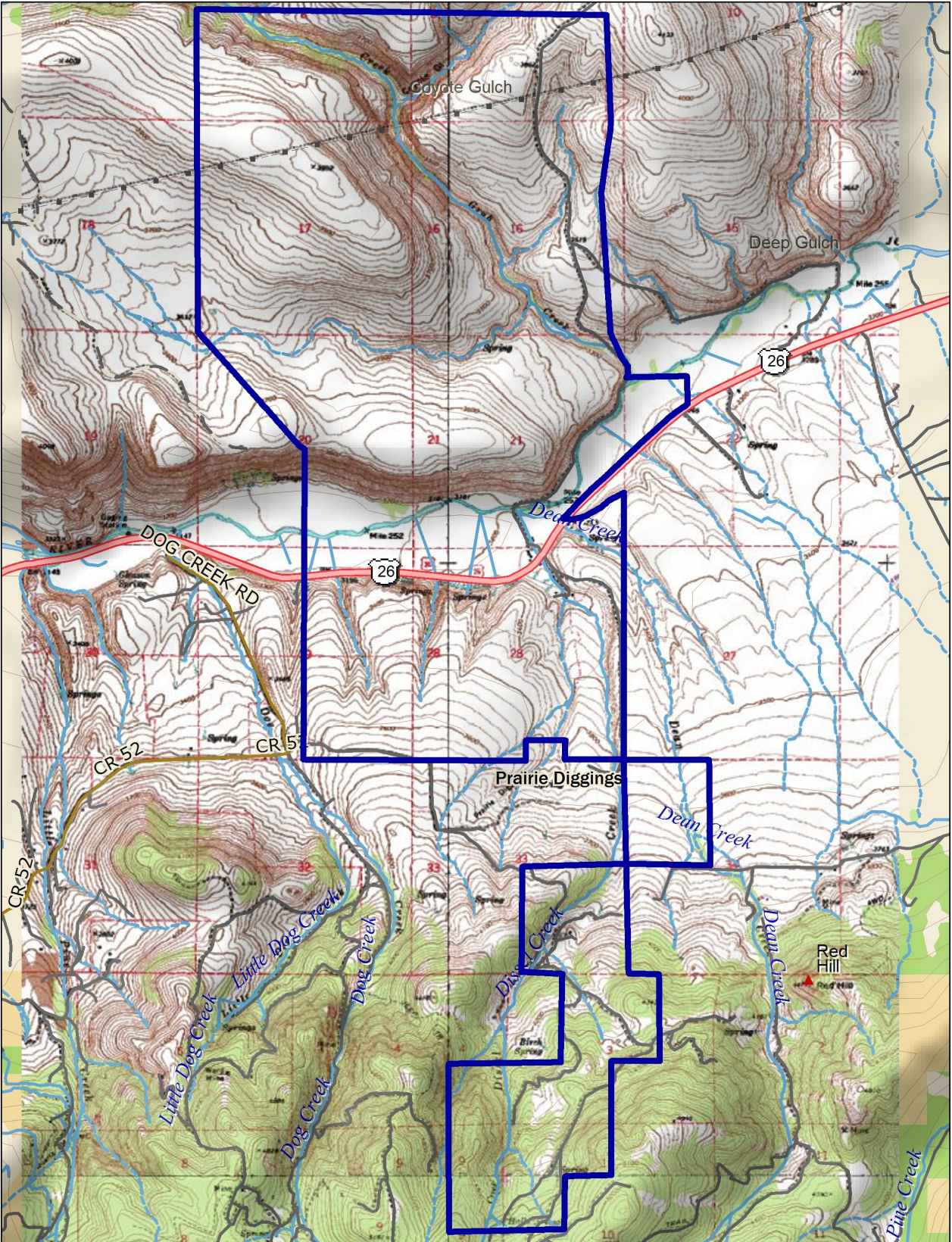
© DeLorme. Topo North America™ 10.

[www.delorme.com](http://www.delorme.com)



Data Zoom 11-6

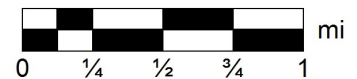
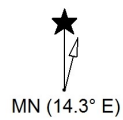




Data use subject to license.

© DeLorme. Topo North America™ 10.

[www.delorme.com](http://www.delorme.com)



Data Zoom 11-6



## John Day, Oregon

With their cattle drives down Main Street, the Timber Truckers Light Parade, and border collies and horse trailers, the small community of John Day wears its heart and heritage on its sleeve. Dramatic scenery, the beautiful, meandering John Day River and the John Day Fossil Beds National Monument all testify to the area's remarkable and often violent geologic past. Outdoor recreation is a huge draw for visitors, though historic sites are also popular. The Kam Wah Chung & Co. Museum offers a fascinating look at the lives of Chinese residents here during the late nineteenth and early twentieth centuries. John Day is located in [Eastern Oregon](#), where miles of scenic byways, alpine wilderness, working cattle ranches and basalt canyons are still the place for explorers to make their mark.

Taken from TravelOregon website.

[illegible]