



**United States
Department of
Agriculture**

Farm and Foreign
Agricultural
Services

Farm Service
Agency

Clinton County
FSA Service
Center
2343 N US 27
St. Johns, MI
48879

Tel:
989-224-3720

FAX:
855-663-1379

May 1, 2015

Andrew Barrone
10655 Hollister Road
Laingsburg, MI 48848-9248

Dear Mr. Barrone:

In our continuous effort to refine our farm records we have taken another look at the boundaries your farm. Changes have been made and we are sending you a new map for your review.

If you do not agree with the boundaries, we invite you to visit our office so we can look at the information on the computer together. If we do not hear from you we will assume that we have successfully corrected your farm maps.

Sincerely,

A handwritten signature in dark ink, reading "Valerie Prosser". The signature is written in a cursive, flowing style.

Valerie Prosser
Acting County Executive Director

Enclosures



CLINTON COUNTY FSA
2343 N US 27
ST. JOHNS MI 48879
989-224-3720

Farm: 1890
 Tract: 3448

USDA PROGRAM PURPOSES ONLY

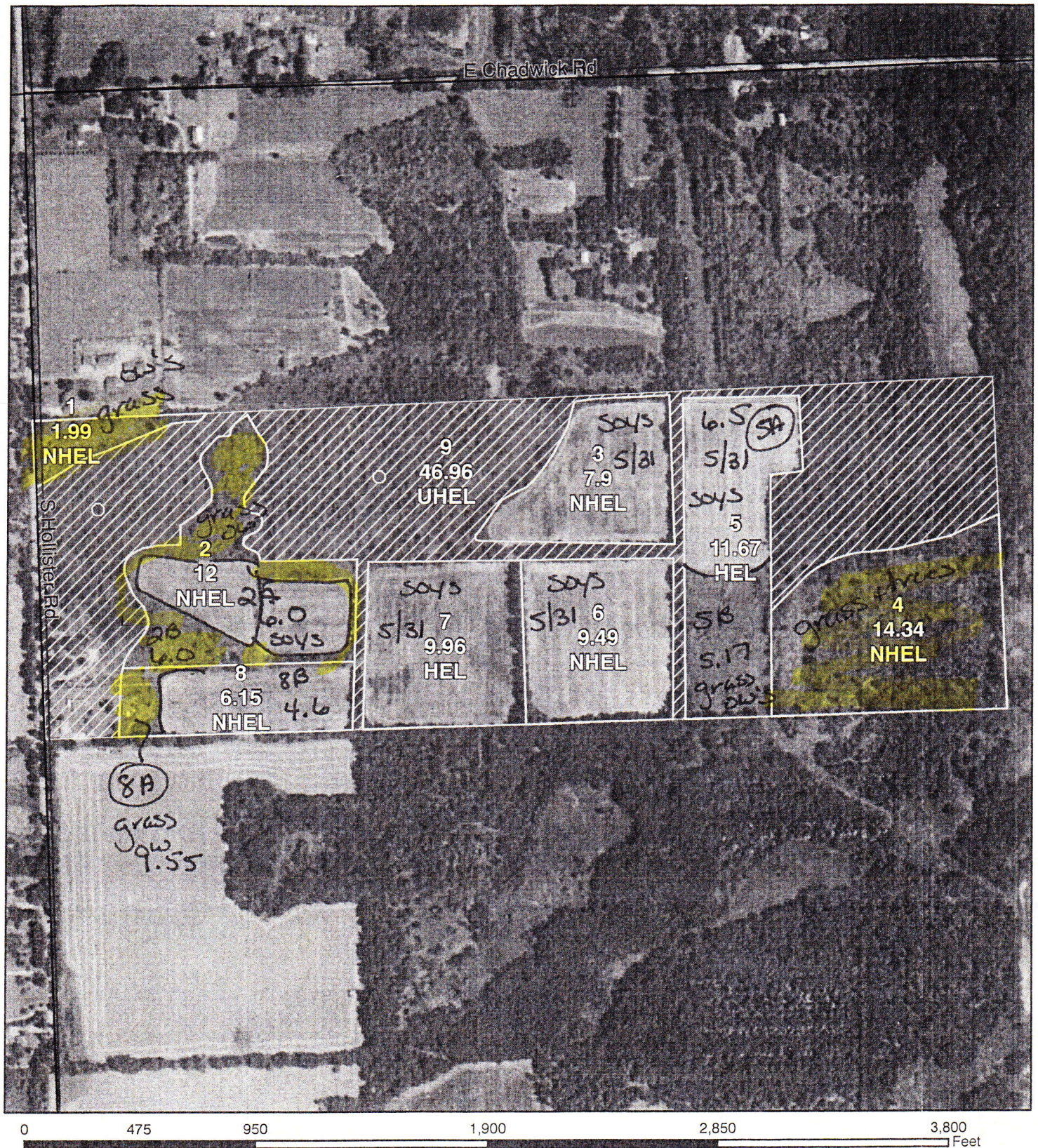
Disclaimer: Wetland identifiers do not represent the size, shape or specific determination of the area. Refer to your original determination (CPA-026 and attached maps) for exact wetland boundaries and determinations, or contact NRCS.

Crop Year 2015
Wetland Determination Identifiers *NEW*
 ● Restricted Use
 Limited Restrictions *Victor 36*
 ■ Exempt from Conservation Compliance Provisions
 HEL = Highly Erodible Land
 NHEL = Not Highly Erodible Land
 UHEL = Undetermined HEL

April 09, 2015



Ron Arthur



CLINTON COUNTY FSA
2343 N US 27
ST. JOHNS MI 48879
989-224-3720

Farm: 1890
 Tract: 3448

USDA PROGRAM PURPOSES ONLY

Disclaimer: Wetland identifiers do not represent the size, shape or specific determination of the area. Refer to your original determination (CPA-026 and attached maps) for exact wetland boundaries and determinations or contact NRCS

- Wetland Determination Identifiers**
- Cropland
 - Not Cropland
 - Restricted Use
 - Limited Restrictions
 - Exempt from Conservation Compliance Provisions
 - HEL = Highly Erodible Land
 - NHEL = Not Highly Erodible Land
 - UHEL = Undetermined HEL

OLD



June 24, 2014