

206 acre Hunting Tract Clarendon County, SC



Southeastern Land Brokerage, LLC
South Carolina - North Carolina - Georgia - Arkansas

O. Max Nelson
Phone: 803.404.8351

1224 Pickens Street, Suite 200
Columbia, SC 29205

Max@SELandBrokerage.com
www.SELandBrokerage.com



Southeastern Land Brokerage, LLC
South Carolina - North Carolina - Georgia - Arkansas



Southeastern Land Brokerage, LLC
South Carolina - North Carolina - Georgia - Arkansas



Southeastern Land Brokerage, LLC
South Carolina - North Carolina - Georgia - Arkansas



Southeastern Land Brokerage, LLC
South Carolina - North Carolina - Georgia - Arkansas

Property Details

Price: \$850/acre **\$175,100.00**

Acreage/Size: 206+/- acres

Tax Map ID#: 327-00-01-010

County: Clarendon County, SC

Address/Cross Street: Deeded Easement from Salem Road

City: New Zion, SC

Coordinates: 33.836696, -80.000143

Description:

An excellent opportunity to own a quality hunting and recreational investment located very close to the town of New Zion, SC. The 206 acres is comprised of roughly 25-30 acres of usable high ground for improvements such as added food plots, shooting lanes, roads or a potential homesite. The balance of the property is wildlife rich bottomland with Puddin Swamp running through the property. The dynamic of this property will encourage wildlife habitat and offer game opportunities in whitetail deer, ducks, turkey and much more. It is a rare opportunity to own such a large tract of land for such a minimal investment. This property truly offers the "Sportsman's Dream" at a very affordable price.

*Agent has interest in the property.

Shown by appointment only. Call John Hilton - 803.983.5546 or Max Nelson - 803.404.8351



Southeastern Land Brokerage, LLC
South Carolina - North Carolina - Georgia - Arkansas



Source: Esri, DigitalGlobe, GeoEye, Earthstar Geographics, CNES/Airbus DS, USDA, USGS, AEX, Getmapping, Aerogrid, IGN, IGP, swisstopo, and the GIS User Community

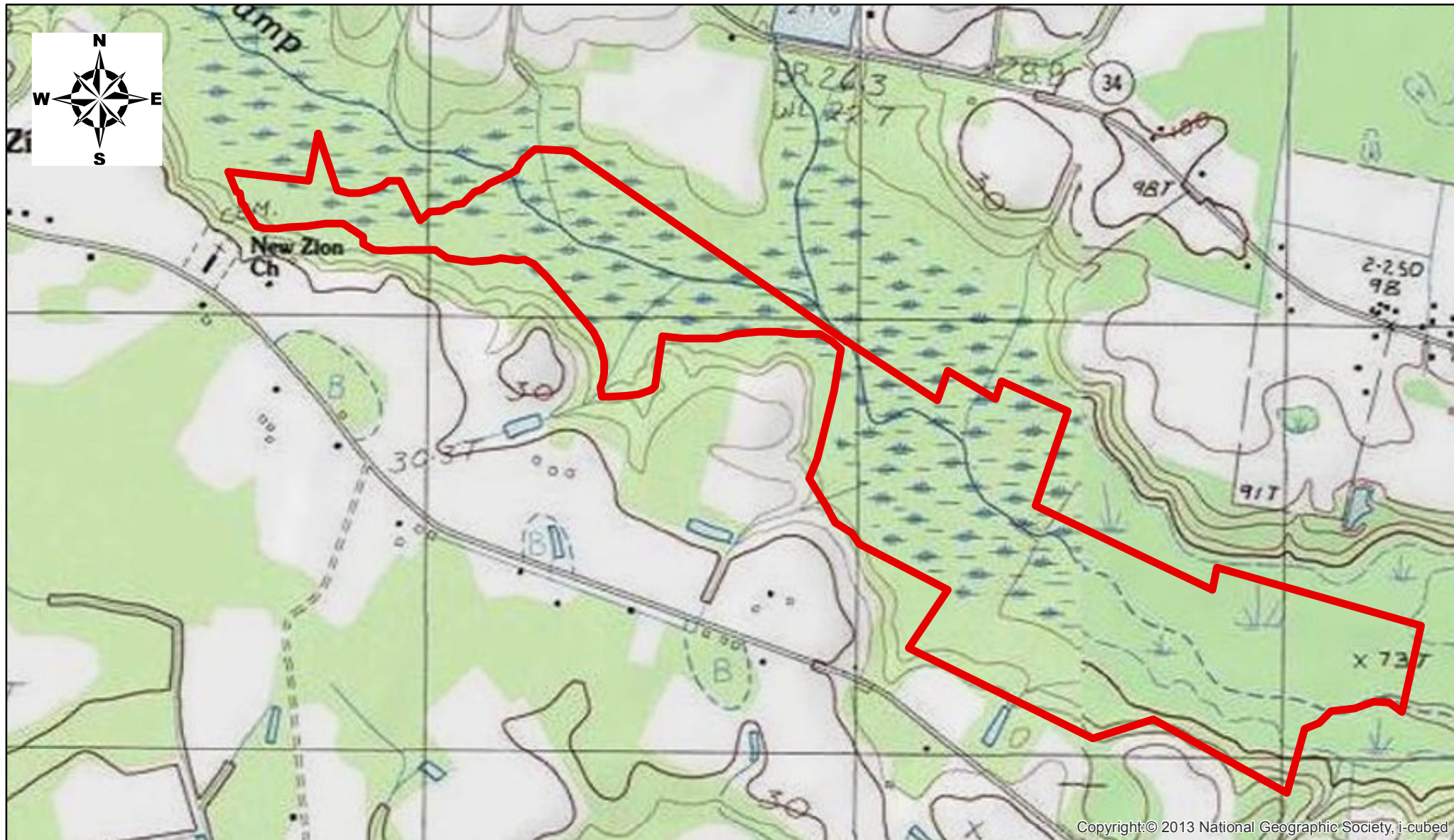


Southeastern Land Brokerage, LLC

South Carolina - North Carolina - Georgia - Arkansas

O. Max Nelson, Broker
803.404.8351

Max@selandbrokerage.com



Copyright:© 2013 National Geographic Society, i-cubed



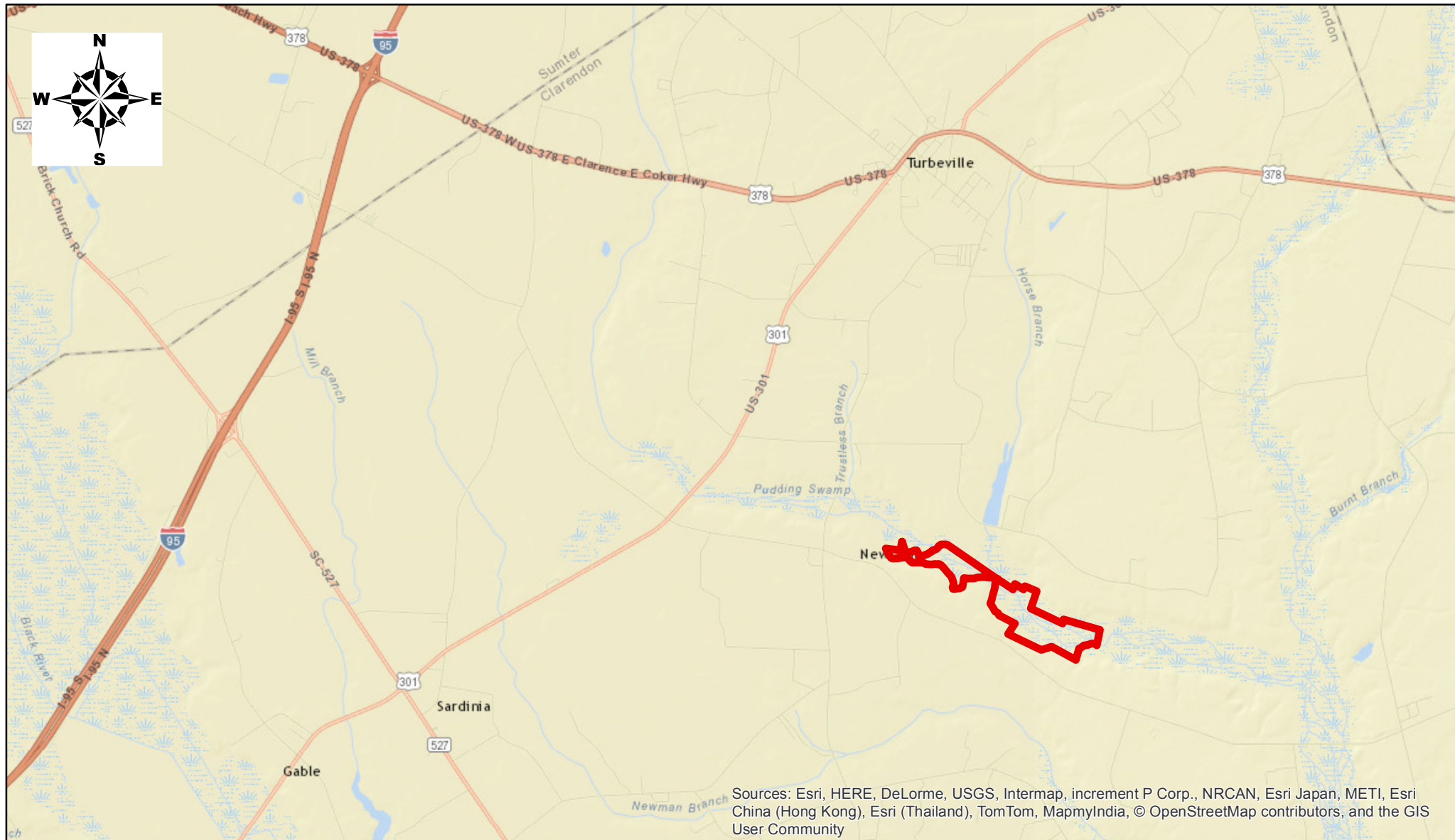
Southeastern Land Brokerage, LLC

South Carolina - North Carolina - Georgia - Arkansas

O. Max Nelson, Broker

803.404.8351

Max@selandbrokerage.com



Southeastern Land Brokerage, LLC

South Carolina - North Carolina - Georgia - Arkansas

O. Max Nelson, Broker
803.404.8351

Max@selandbrokerage.com