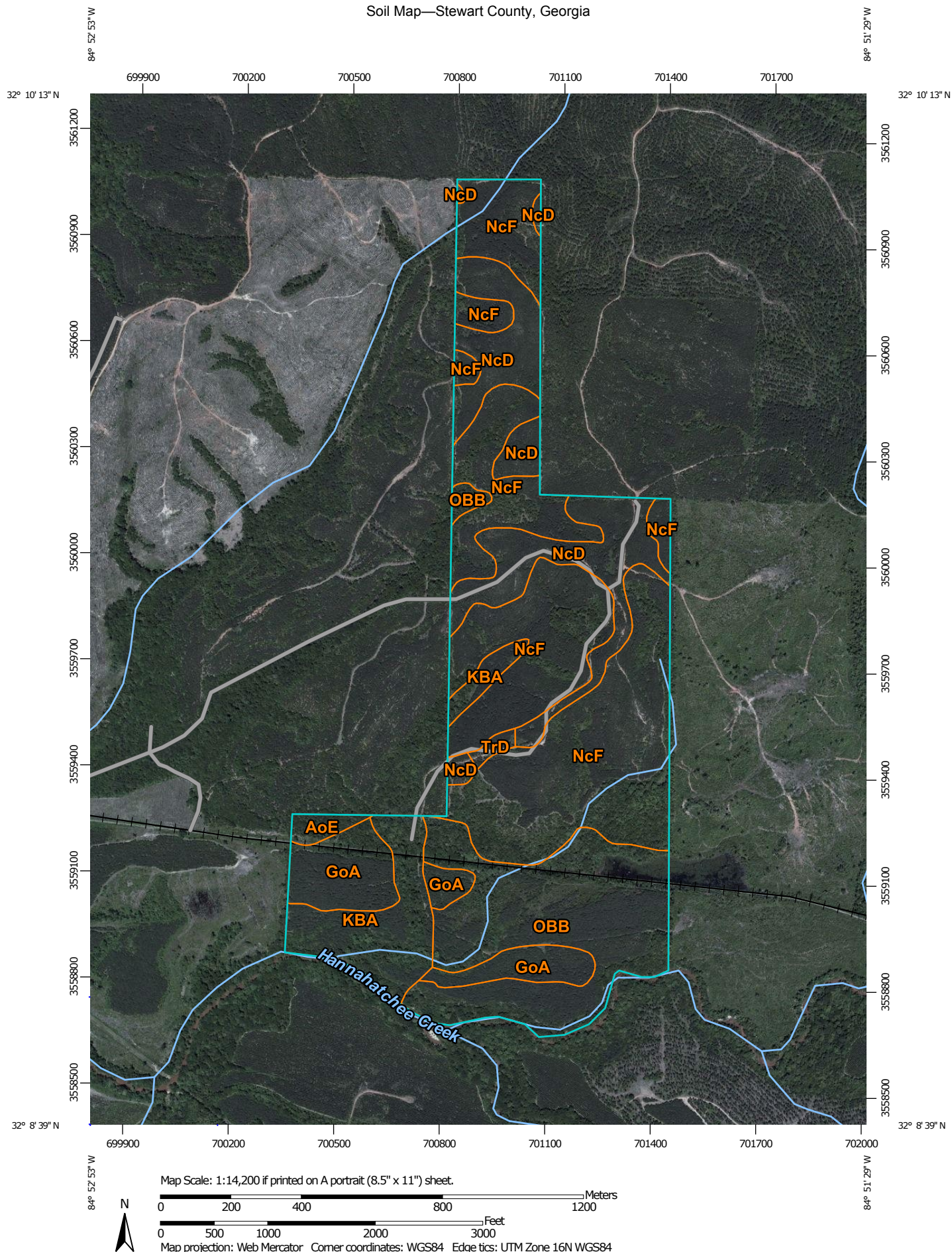


# Soil Map—Stewart County, Georgia



## Map Unit Legend

Stewart County, Georgia (GA259)			
Map Unit Symbol	Map Unit Name	Acres in AOI	Percent of AOI
AoE	Ailey-Cowarts complex, 8 to 25 percent slopes	3.2	1.0%
GoA	Goldsboro loamy sand, 0 to 2 percent slopes	27.5	8.2%
KBA	Kinston and Bibb soils, 0 to 1 percent slopes, frequently flooded	29.5	8.8%
NcD	Nankin-Cowarts complex, 5 to 15 percent slopes	52.4	15.7%
NcF	Nankin-Cowarts complex, 15 to 35 percent slopes	148.4	44.4%
OBB	Ochlockonee, Iuka, and Bibb soils, 0 to 5 percent slopes, frequently flooded	71.5	21.4%
TrD	Troup loamy sand, 5 to 15 percent slopes	1.6	0.5%
<b>Totals for Area of Interest</b>		<b>334.1</b>	<b>100.0%</b>