

Arkansas, Chicot County

1350 acres +/-



Brown Realty Co. of Rayville, Inc.
Jerry Brown, Broker



www.brownrealtyco.com
318.728.9544



DESCRIPTION

1350 acres +/- Chicot County, Arkansas

Great Arkansas hunting tract located in Chicot County. This place has it all: deer, duck, turkey, and great fishing. Food plots are already established with 10 box stands and multiple feeders. This tract is located just west of the old Greenville Mississippi River Bridge. This tract offers great hunting as well as convenience to some of the finest dining in the Delta. Doe's Eat Place is only 15 minutes away and the Cowpen is only 5. Harlow's Casino is just across the bridge. This tract comes equipped with a two-bedroom lodge that could easily be added onto if needed. The foundation is so stout that barges could tie off to the structure and never damage the lodge. The inner roads are in excellent shape and ready to hunt.

Shown by appointment only.

Brown Realty Co. of Rayville, Inc.
Jerry Brown, Broker



www.brownrealtyco.com
318.728.9544

PROPERTY LOCATION

This property is located in Chicot County, Arkansas East of Lake Village, AR
with access off of Hwy 82 and Levee Rd.



Brown Realty Co. of Rayville, Inc.
Jerry Brown, Broker



www.brownrealtyco.com
318.728.9544

WILDLIFE

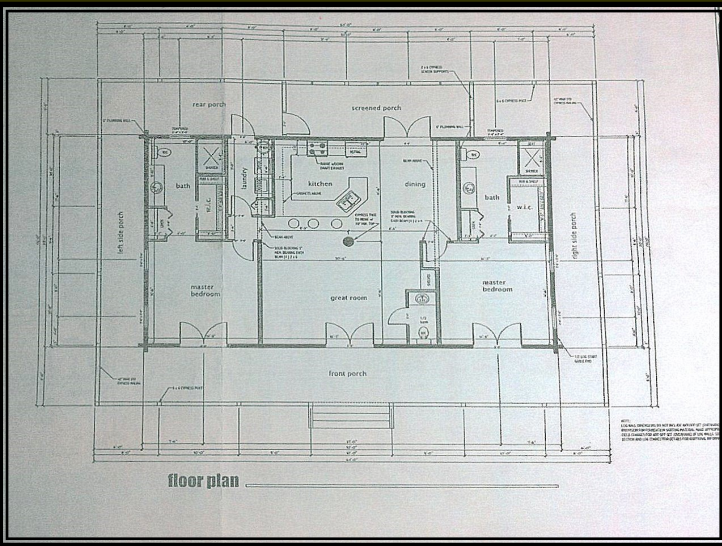
This property offers deer, duck, turkey, and small game hunting and there is also fishing available.



Brown Realty Co. of Rayville, Inc.
Jerry Brown, Broker



www.brownrealtyco.com
318.728.9544



IMPROVEMENTS

1560 sq ft lodge with 1383 sq ft porch and storage underneath. 10 box stands and feeders with numerous food plots, bow stands and four 20 ft duck blinds.

Brown Realty Co. of Rayville, Inc.
Jerry Brown, Broker



www.brownrealtyco.com
318.728.9544



PRICE

Total Price of this property is - **\$5,325,000.00**

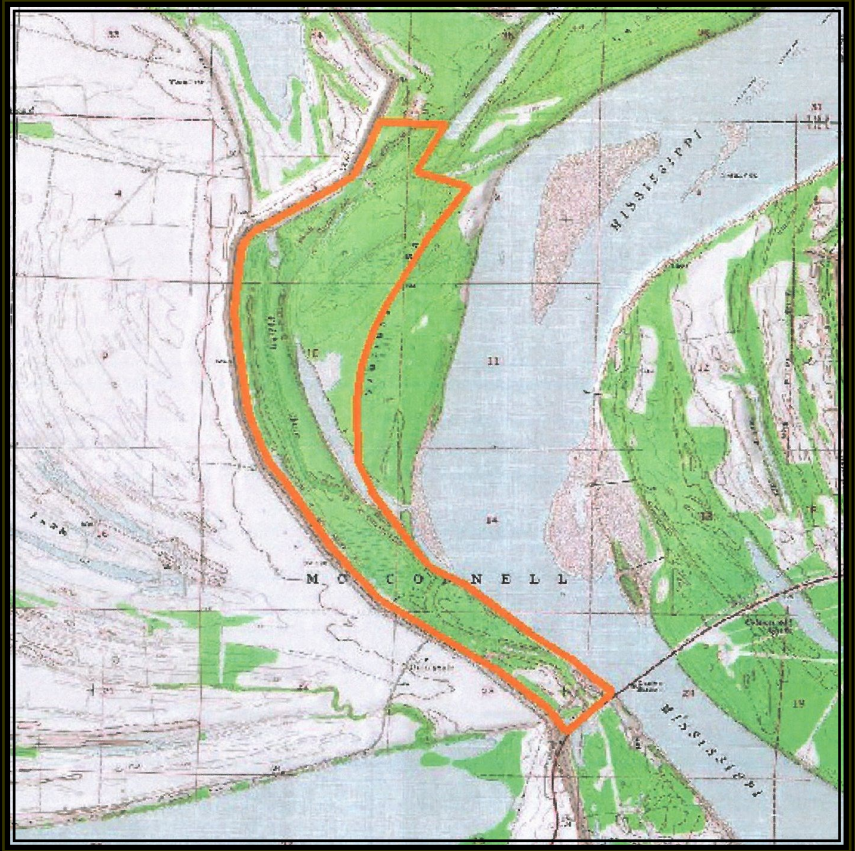
Price Per Acre of this property is - **\$3,944.00**

Brown Realty Co. of Rayville, Inc.
Jerry Brown, Broker



www.brownrealtyco.com
318.728.9544

TOPOGRAPHY MAP



AERIAL MAP

Brown Realty Co. of Rayville, Inc.
Jerry Brown, Broker



www.brownrealtyco.com
318.728.9544

Arkansas, Chicot County

1350 acres +/-



CONTACT INFORMATION

For more information on this property contact:

Jerry Brown, Broker

Office: 318.728.9544

Email: jbrown@brownrealtyco.com

Website: www.brownrealtyco.com