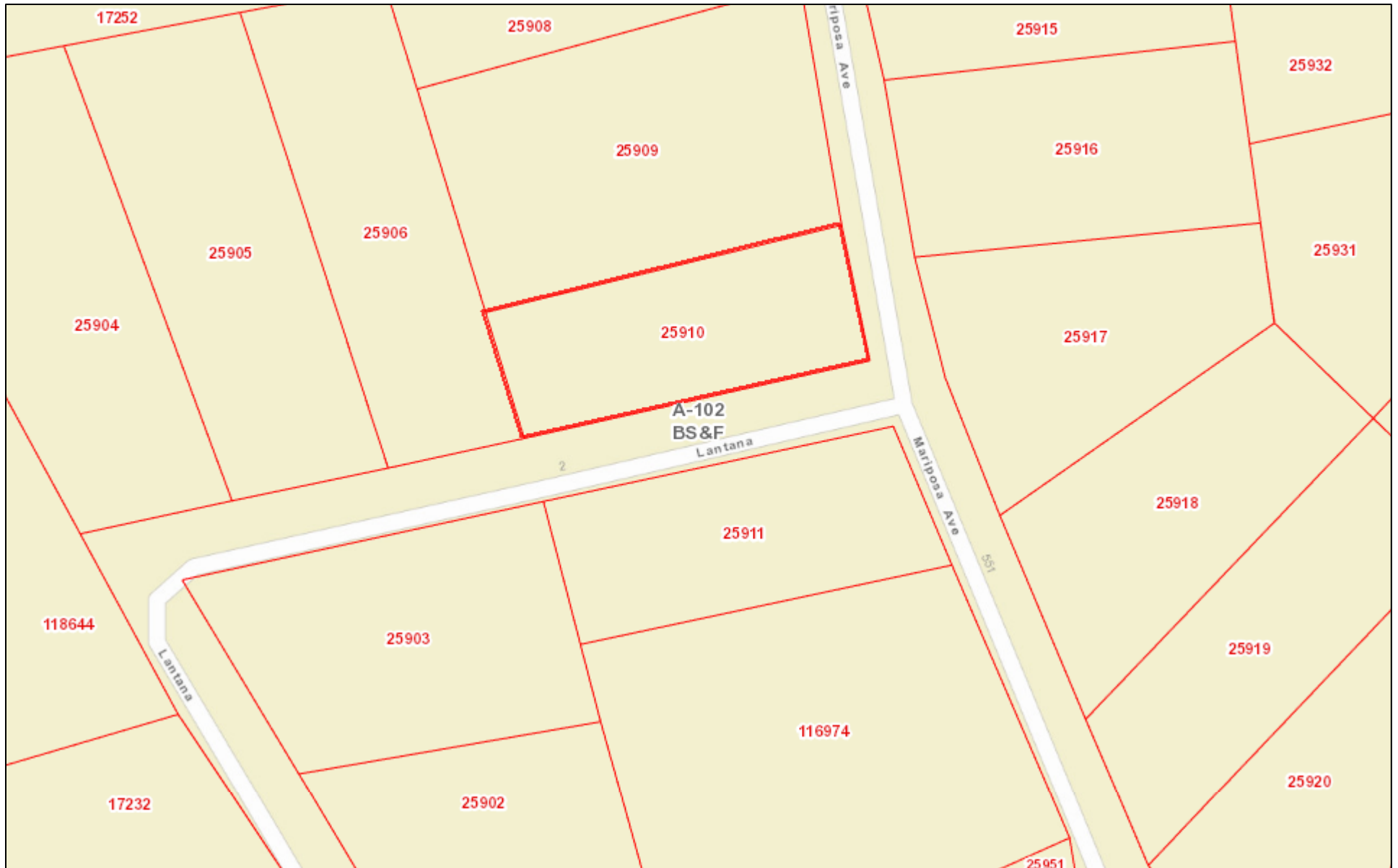




# Lot 13, Mariposa Drive

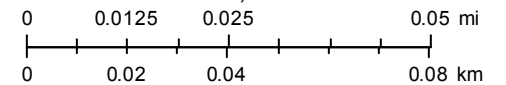


May 29, 2015

-  Parcels
-  Abstracts

Disclaimer: This product is for informational purposes only and has not been prepared for or be suitable for legal, engineering, or surveying purposes. It does not represent an on-the-ground survey and represents only the approximate relative location of boundaries

1:1,505



Sources: Esri, HERE, DeLorme, USGS, Intermap, increment P Corp., NRCAN, Esri Japan, METI, Esri China (Hong Kong), Esri (Thailand),

Uvalde County Appraisal District & BIS Consulting - [www.bisconsultants.com](http://www.bisconsultants.com)

This product and relative contents are the property of the respective governmental entity and BIS Consultants. Use is restricted for official purposes.