

# A.B. HUDSON ESTATE

*TRACT 7 | 5,440± ACRES | ELECTRA, TEXAS*

*2.2± MILES OF FM 2384 FRONTAGE*

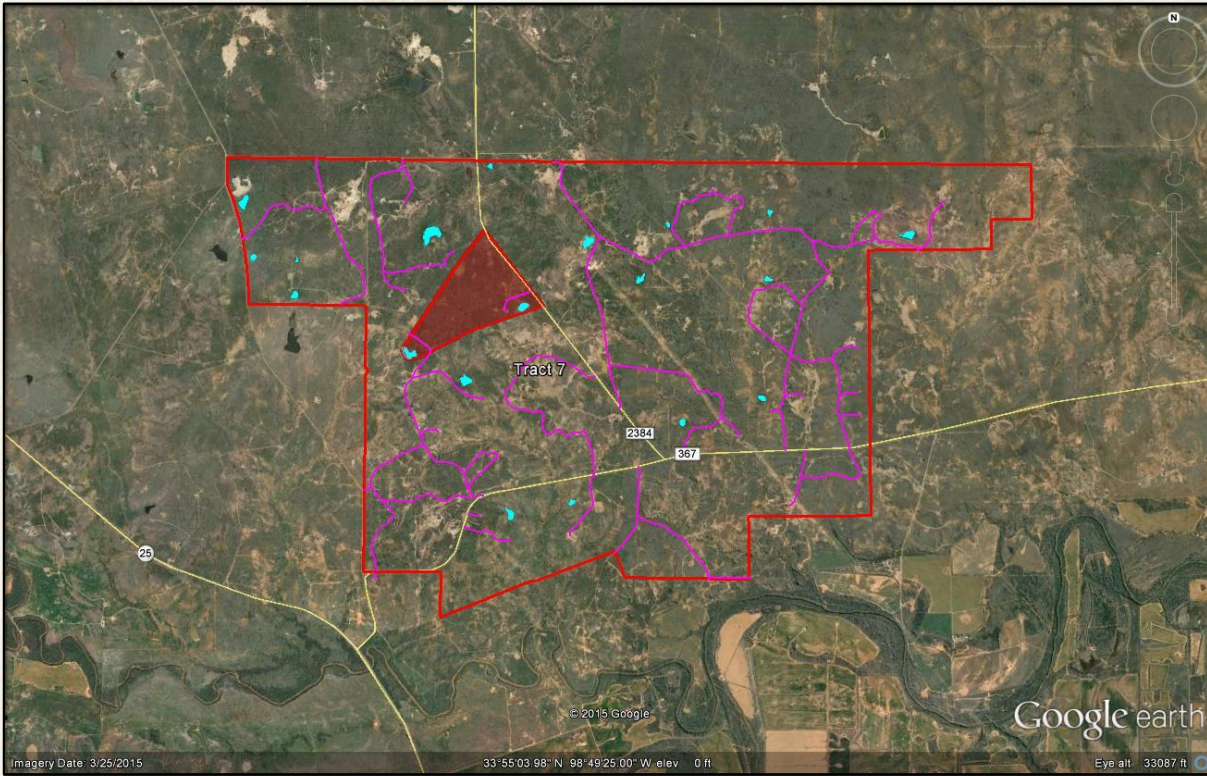


*OFFERED AT: \$4,080,000.00 (\$750/ACRE)*

Premier 32,000 +/- acre cattle/hunting ranch that can be purchased together or individually as eight individual tracts. Tract 7 is located south of Electra and is the southern most tract. 2.2 +/- miles of FM 2384 road frontage and 3.3 +/- miles of FM 367 road frontage further divide this tract into three parcels. Great fencing, lots of lease roads, and plenty of tanks and ponds exist on this tract. This probably one of the best hunting tracts on the ranch. Some Oil & Gas production exists but would not impair a row-crop conversion project in suitable locations.



## TRACT 7 | AERIAL MAP



## TRACT 7 | TOPOGRAPHICAL MAP

