



# A.B. HUDSON ESTATE

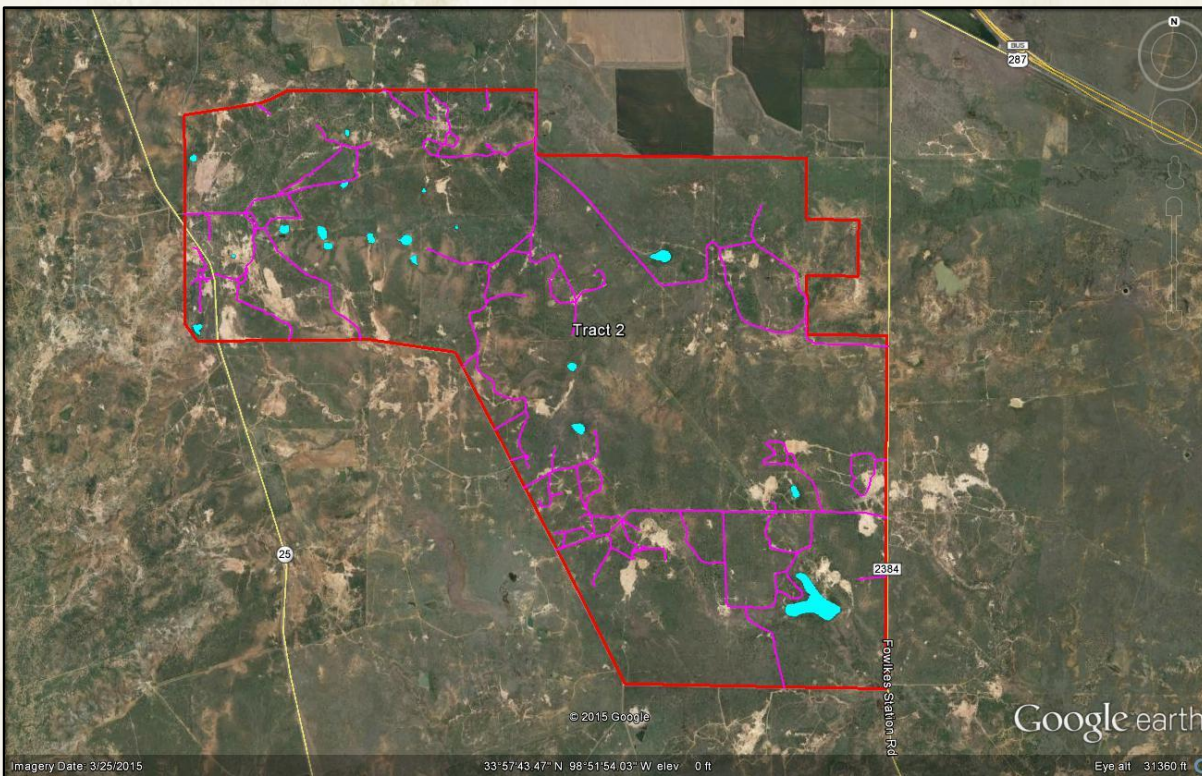
*TRACT 2 | 5,287± ACRES | ELECTRA, TEXAS*  
*3/4± MILE OF HIGHWAY 25 FRONTAGE*

*OFFERED AT: \$3,965,250.00 (\$750/ACRE)*

Premier 32,000 +/- acre cattle/hunting ranch that can be purchased together or individually as eight individual tracts. Tract 2 is located south of Electra and is bordered on the west by Highway 25 and on the east by FM 2384. This tract has potential for commercial development but is mainly the center of ranching operations. Great fencing, lots of lease roads, and plenty of tanks and ponds exist on this Tract. Some Oil & Gas production exists but would not impair a row-crop conversion project in suitable locations.



## TRACT 2 | AERIAL MAP



## TRACT 2 | TOPOGRAPHICAL MAP

