

A scenic landscape photograph of a river or lake with dense green trees on the banks. The water is calm, reflecting the surrounding foliage. A semi-transparent text box is overlaid on the upper portion of the image.

# A.B. HUDSON ESTATE

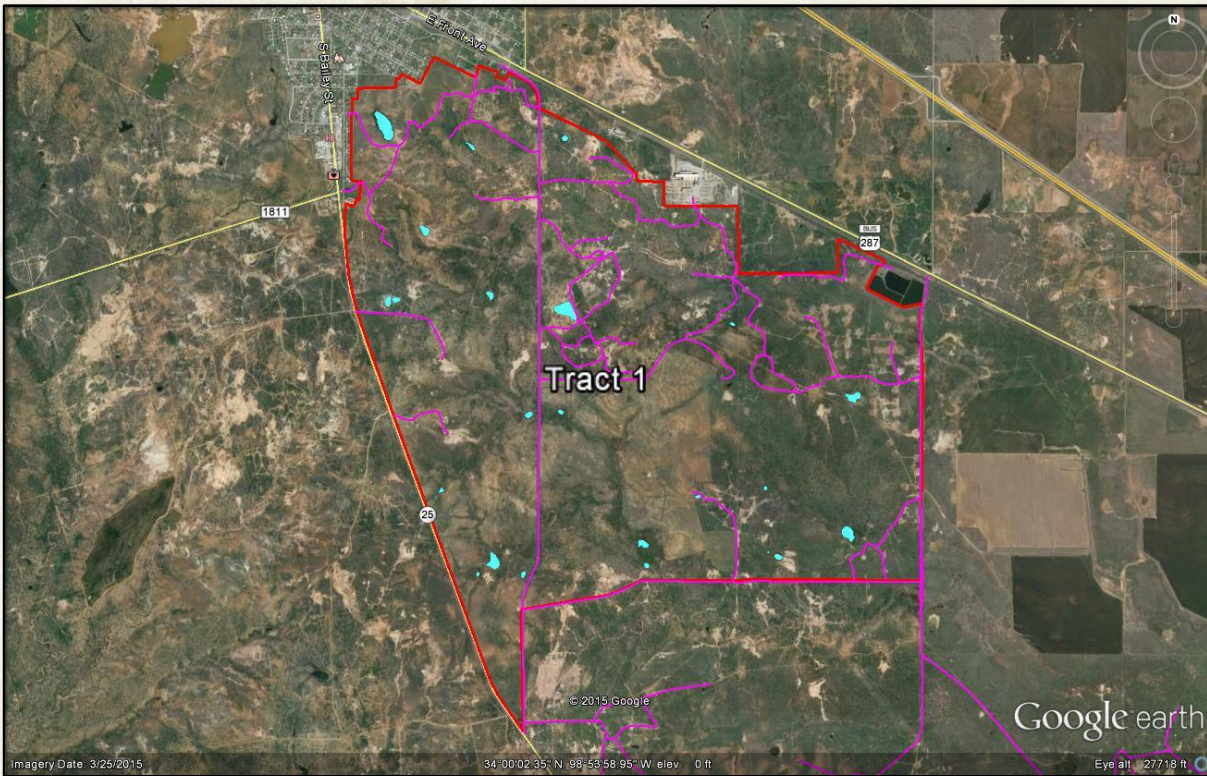
*TRACT 1 | 3,634± ACRES | ELECTRA, TEXAS*  
*2.8± MILES OF HIGHWAY 25 FRONTAGE*

*OFFERED AT: \$3,088,900.00 (\$850/ACRE)*

Premier 32,000 +/- acre cattle/hunting ranch that can be purchased together or individually as eight individual tracts. Electra borders Tract 1 on the north side of the property with Highway 25 as its western boundary and FM 2384 as its eastern boundary. This tract has the most potential for commercial development. This tract is well suited for commercial or residential expansion from Electra and/or row-crop on a sizeable portion of the acreage. Some Oil & Gas production exists but would not impair a row-crop conversion project.



## TRACT 1 | AERIAL MAP



## TRACT 1 | TOPOGRAPHICAL MAP

