

Beech Grove Lane  
**Galax, VA**  
Grayson County

# 13 Residential Building Lots

**10 Riverfront Lots with 1 mile of New River Frontage**

***Eagle View on the New River***

**SALE 1:** *These lots sell ABSOLUTE without reserve*  
5 lots (4 riverfront, 1 river access) from 6.56 to 12.96 acres

**SALE 2:** *These 6 lots sell with a reserve (minimum bid)*  
8 lots (6 riverfront, 2 river access) from 6.67 to 11.90 acres

**REAL ESTATE AUCTIONS**  
**Saturday, July 11 at 10am On-Site**

10% Buyers Premium added to high bid(s) to determine contract sales price(s). 10% deposit due on the day of the auction with the balance due at closing within 30 days. Potential buyers must perform such independent investigations with respect to property as they deem necessary to verify information provided by the auction company and/or seller. All information provided by the auction company and/or seller is deemed reliable but not warranted. All property is being sold "as is" without representations or warranties of any kind or nature. Full terms available online and displayed on day of the auction.



Realty & Auction Group

**800-780-2991**

[www.countsauction.com](http://www.countsauction.com)

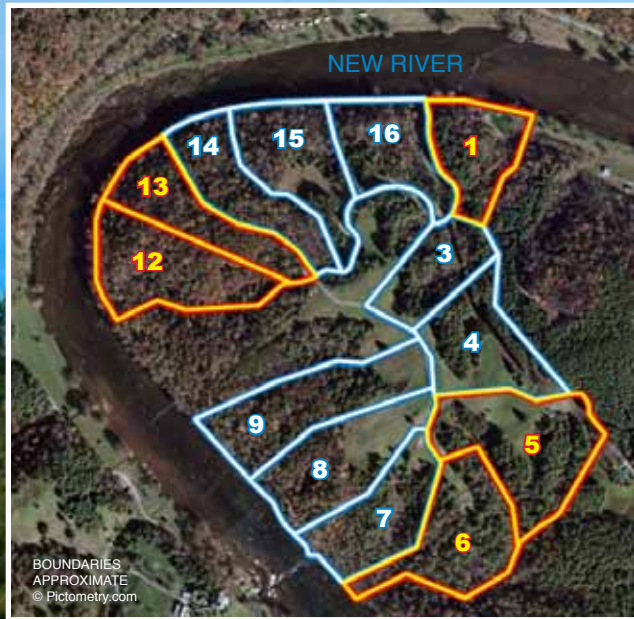
828 Main St, 15<sup>th</sup> Fl, Lynchburg, VA 24504

Offices in Lynchburg, Forest, Christiansburg,  
Appomattox, Abingdon & Marion, VA



**SCAN THIS**  
for more information on  
auction #A071114





## SALE 1

*These lots sell ABSOLUTE without reserve*

- Lot 1:** 6.56 acres with 537 feet of river frontage
- Lot 5:** 12.96 acres with river access
- Lot 6:** 10.69 acres with 153 feet of river frontage
- Lot 12:** 10.75 acres with 777 feet of river frontage
- Lot 13:** 8.31 acres with 537 feet of river frontage

## SALE 2

*These 6 lots sell with a reserve (minimum bid)*

- Lot 3:** 6.67 acres with river access
- Lot 4:** 9.30 acres with river access
- Lot 7:** 8.97 acres with 461 feet of river frontage
- Lot 8:** 10.71 acres with 442 feet of river frontage
- Lot 9:** 11.90 acres with 512 feet of river frontage
- Lot 14:** 8.78 acres with 457 feet of river frontage
- Lot 15:** 9.61 acres with 693 feet of river frontage
- Lot 16:** 8.28 acres with 600 feet of river frontage

# Eagle View on the New River

All 13 lots have great views of the New River and the surrounding mountains. There will be an easement along the New River for a walking trail. There is also a recreation area along the river for all property owners to enjoy. Underground electricity has been installed. Septic work for each lot was performed several years ago. All property owners will enjoy the use of this river frontage.

This is a beautiful property with some of the prettiest views to be found anywhere. It is very peaceful and quiet yet only 11 miles from all that Galax offers. Galax is the Bluegrass Capital of the World, near The New River Trail which offers 52 miles of hiking, biking and horseback riding along the New River. The tallest mountain in Virginia, Mount Rogers, is close by.

**Beech Grove Lane  
Galax, VA**

*Driving directions available  
on our website*



# BUILDING LOT AUCTIONS

## Saturday, July 11 at 10am On-Site

**Agent on Site** Wednesday, June 24; Saturday, June 27; Sunday, July 5 (10am-12pm)

# On Top of the Auction World

MARKETING AROUND THE CORNER & AROUND THE GLOBE

[www.countsauction.com](http://www.countsauction.com)

**800-780-2991**

**Sale Manager:**

Pete Ramsey (434) 258-6611

[pete@countsauction.com](mailto:pete@countsauction.com)