



# VIRGINIA ESTATES

VIRGINIA'S FINEST REAL ESTATE



Welcome Home to:

6235 Berry Plains Landing, King George, VA 22485



# Whimsical Waterways:

With nearly a mile of river frontage, this European flair home rests on 188 acres fronting the Rappahannock River.







# Great Expanse:

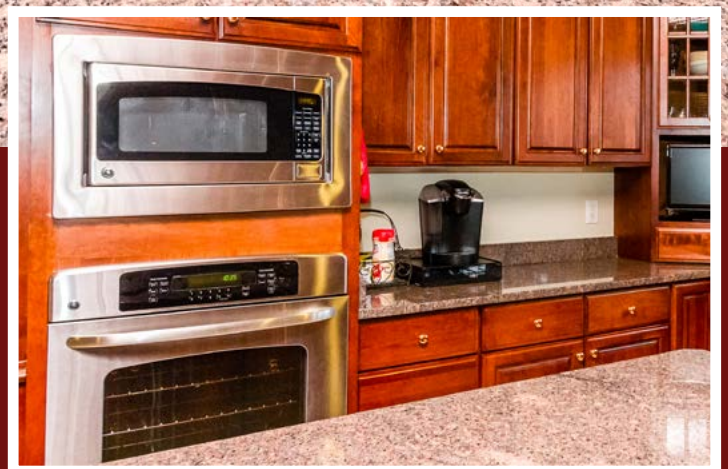
The main residence is positioned on an open 12 acre parcel which adjoins the 176 wooded nature lovers paradise.



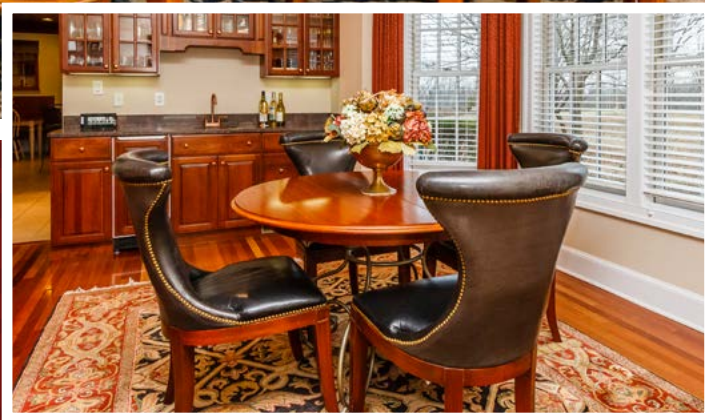




Wine & Dine







The 6200 square foot home offers high end amenities, superior craftsmanship and a design rarely available in today's market. The floor plan is crafted for large scale and intimate entertaining while providing casual family living spaces.





Relax!







A custom design, this residence boasts of 4 bedrooms one of which is a self contained suite with a kitchenette and separate entrance, along with a spacious media / family room and traditional formal rooms.





Rejuvenate:

4 Full Baths, 2 Half.





Privacy +  
Comfort

Work, study or play in the craft / den  
space and office with private access.



# Storage & Space

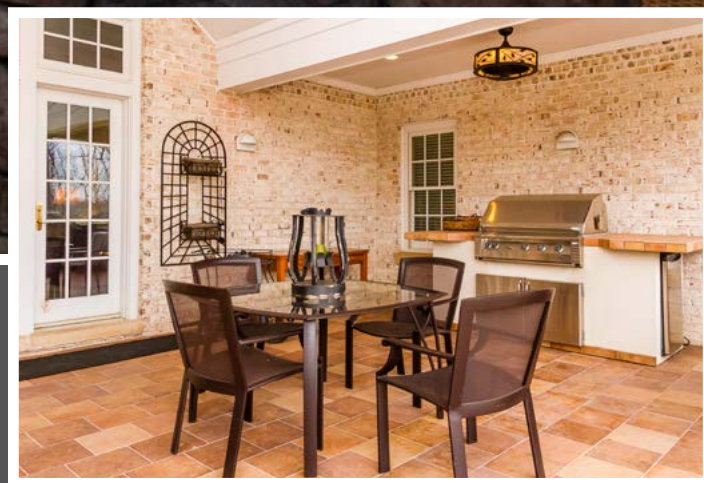


A 3200 square foot heated garage, a two bay attached garage and stamped cement parking and drive way areas.





# The Whole Package



Some of the features you will find include Brazilian cherry floors throughout, mahogany pocket and front doors, four zone geothermal heating and cooling system, putting green, covered entertaining porch with outdoor kitchen and fire pit - only to name a few! Located minutes from Fredericksburg and the VRE, say hello to your new retreat!



# Don't Lock Yourself Out of Paradise.

*Call:*

Patrick McCreery, Associate Broker  
Text & mobile: 804-512-6085

Rick Walden, Realtor & Owner  
Text & mobile: 434-981-5923



Explore and experience fine real estate on:  
[www.virginiaestates.com](http://www.virginiaestates.com)

