

Mt. Vernon Secluded Custom Home



Wilburn Ranch Brokerage

www.wilburnranchbrokerage.net

ranchbrokerage@yahoo.com

541.421.5300



Secluded Mt. Vernon Luxury Home

This very lovely quality home is located on 17.3 acres approximately 6 miles south of Mt. Vernon, Or. It is very secluded but does have one neighbor about a mile from the house that can't be seen from the home. This home was built in 2008 and everything in it speaks of quality construction and detail. It is approximately 4000 sq. ft. on two levels. An office/recreational room is over the one car garage. There are 3 bedrooms and 2.5 baths. The main bath has a jetted tub, separate shower stall, partially heated floor and a sauna. The flooring is tile as is the kitchen, laundry and additional bathrooms. Hickory flooring is used in the main living area whereas carpets are used in the bedrooms. Anderson wood windows and doors are standard throughout the house. All throughout the home, in the baths, bedrooms, kitchen, utility room, knotty hickory cabinets have been installed. The kitchen is spacious and airy as is the rest of the home. It has a long island with a gas cook top. Also there are two wall ovens and granite counter tops. The living area is wide, roomy, very light and from the large windows has beautiful views of the mountains. The owners love to sit in the living room and look at the great views as the house was situated to capture the entire great panorama. There is a large fireplace, on demand gas water heater and a canister vacuum system. DSL internet is also here as the owners do some business from their home. Heat and air conditioning are provided for by a geo-thermal heat/ac system which by use of 3500 feet of underground pipe cuts traditional heating/cooling costs. A deck runs around 3 sides of the home to capture all of the views on this mountain home. The deck is Trex so as to combat the weather aging of a traditional wooden deck.

There are two small ponds around the house with decorative fish in both of them. A lawn and small trees are on three sides with timed irrigation going to them. The water is from a 100 foot well with 40 gallons a minute. The owners raise a large garden including strawberries, raspberries, tomatoes, potatoes, corn, melons, squash and a variety of other vegetables. Fruit trees include peach, plum, apple and pear.

There is a small barn where you can keep animals or store machinery. The owners raise chickens but have no other animals at this time.

Everything about this property is quality. Nothing is out of place and everything is situated for ease of use. It is secluded yet close to town and about 20 miles to a new hospital and doctor offices. The climate is mild with some snow in the winter depending on cyclical weather. Summers will be warm with plenty of time to spend on the deck. There are turkeys, deer, and an occasional elk passing through. The hunting in the county is excellent for deer, elk, and turkeys. It is a conservative county, very friendly and waiting lines at government offices are very small or not at all. It is a pleasure to represent this property.

Price -\$695,000 Firm

Taxes-\$4200



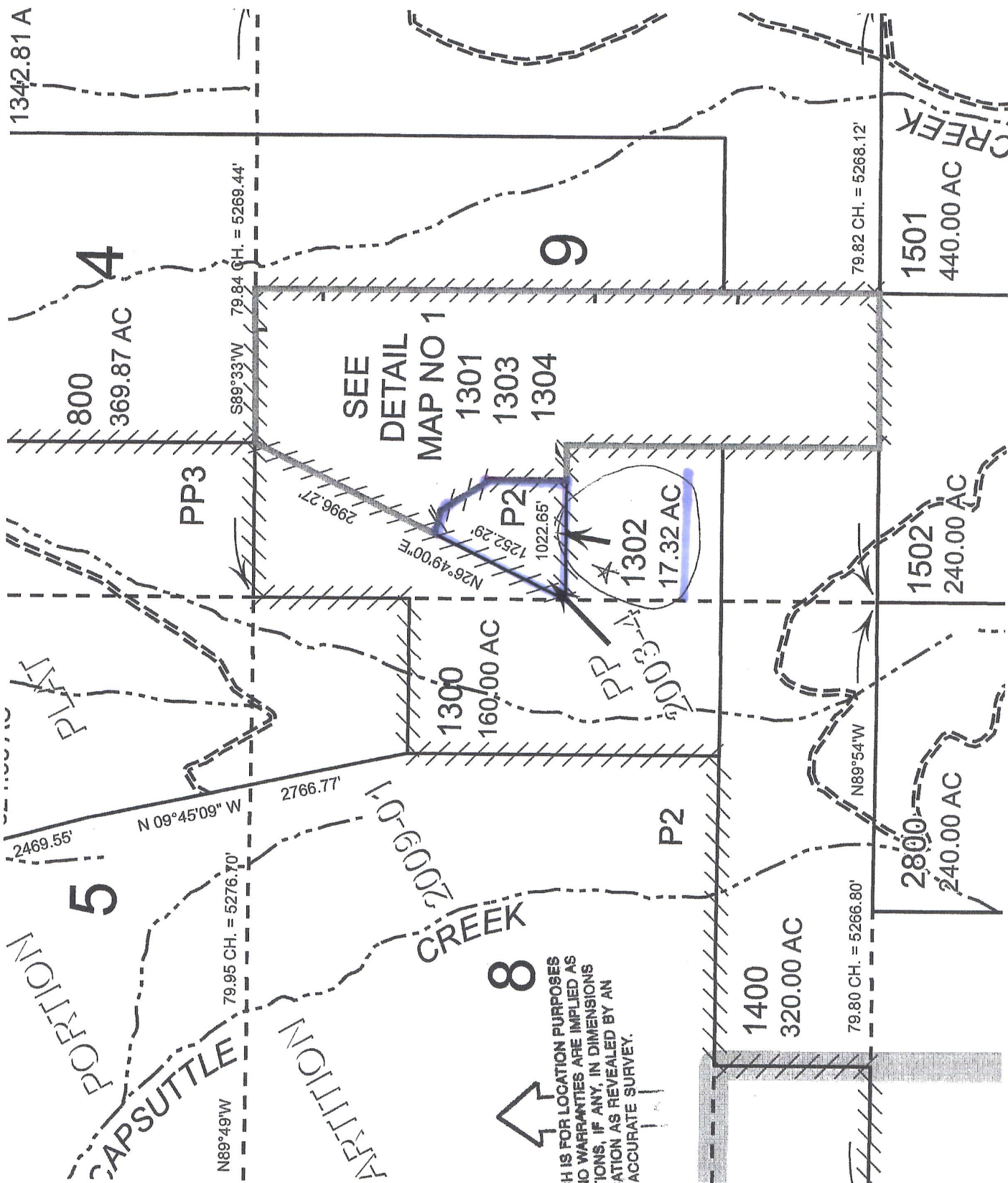
All information is deemed reliable and correct from the owners and representatives. No guarantees are made or implied. A prospective purchaser is expected to carefully investigate and verify the above information as well as all matters affecting the property.











SEE
DETAIL
MAP NO 1
1301
1303
1304

THIS SKETCH IS FOR LOCATION PURPOSES ONLY, AND NO WARRANTIES ARE IMPLIED AS TO VARIATIONS, IF ANY, IN DIMENSIONS OR LOCATION AS REVEALED BY AN ACCURATE SURVEY.

