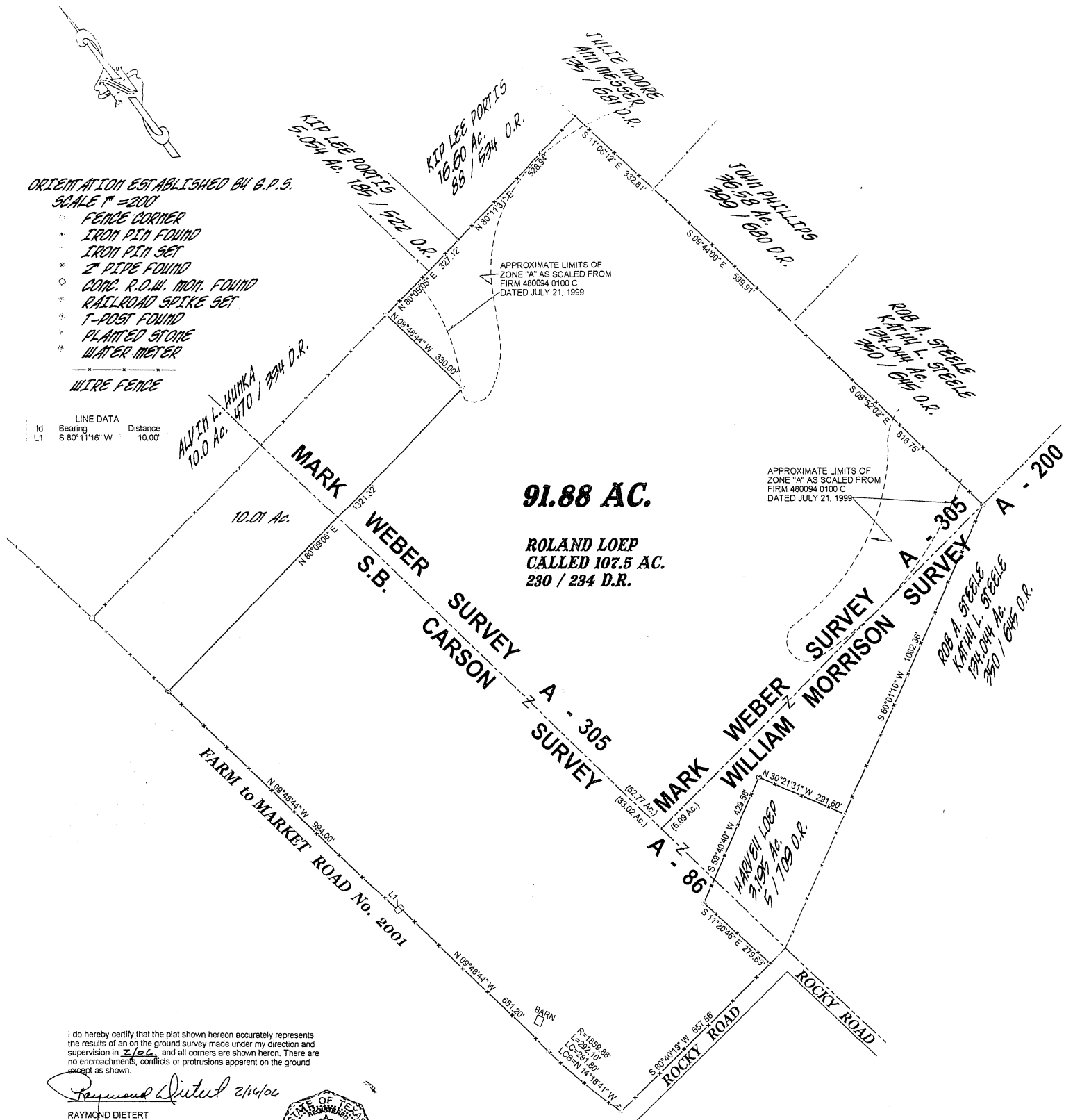


PLAT SHOWING 91.88 acres of land situated in a tract called 107.5 acres in a conveyance to Roland Loep recorded in Volume 230, Page 234, Deed Records situated in the (33.02 ac.) S.B. Carson Survey, Abstract No. 86, (52.77 ac.) Mark Weber Survey, Abstract No. 305 and (6.09 ac.) William Morrison Survey, Abstract No. 200, Caldwell County, Texas

Subject To: Right-of-Way Easement to Goforth Water Supply Corporation, Volume 331, Page 19, Caldwell County Deed Records.



I do hereby certify that the plat shown hereon accurately represents the results of an on the ground survey made under my direction and supervision in 2001, and all corners are shown hereon. There are no encroachments, conflicts or protrusions apparent on the ground except as shown.

Raymond Dietert 2/14/04

RAYMOND DIETERT
 Registered Professional Land Surveyor, No. 1868
 P.O. Box 1253
 Luling, Texas 78648
 830-875-9592 FAX 830-875-2658

