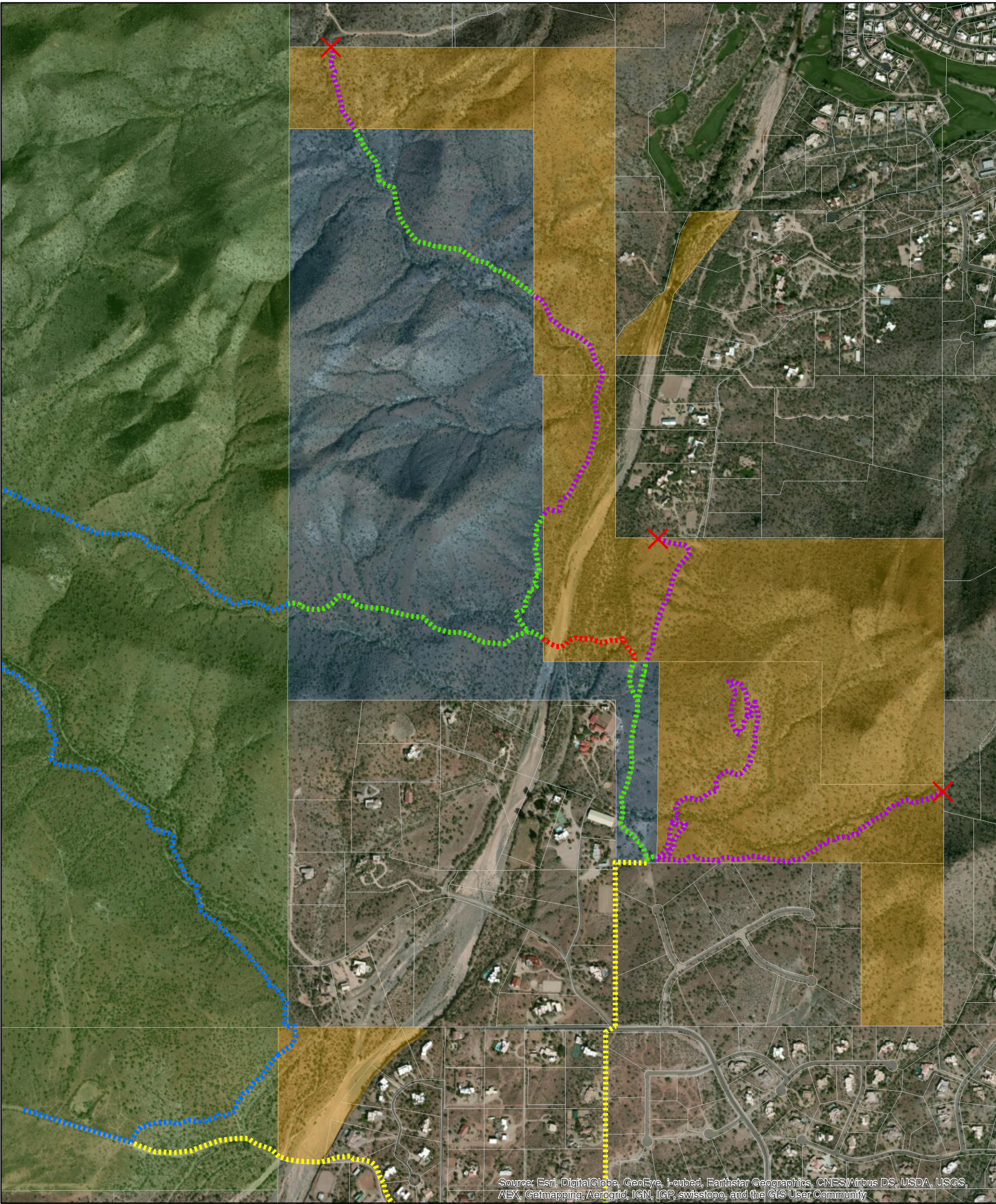




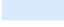






Trail Connectivity Map

P.A. Seitts Preserve at Go John Canyon



-  DFLT Preserves
-  DFLT Trail- Specified Hours
-  DFLT Trail- Dawn-Dusk
-  Trail End
-  State Trust Land
-  State Land Trails
-  Cave Creek Regional Park
-  County Park Trails
-  Town of Cave Creek Trails



The information on these maps is based on the most current information available to Desert Foothills Land Trust's Geographic Information Systems. The Desert Foothills Land Trust does not warrant its accuracy or suitability for any particular purpose. The information on these maps is not intended to replace engineering, financial or primary records research.