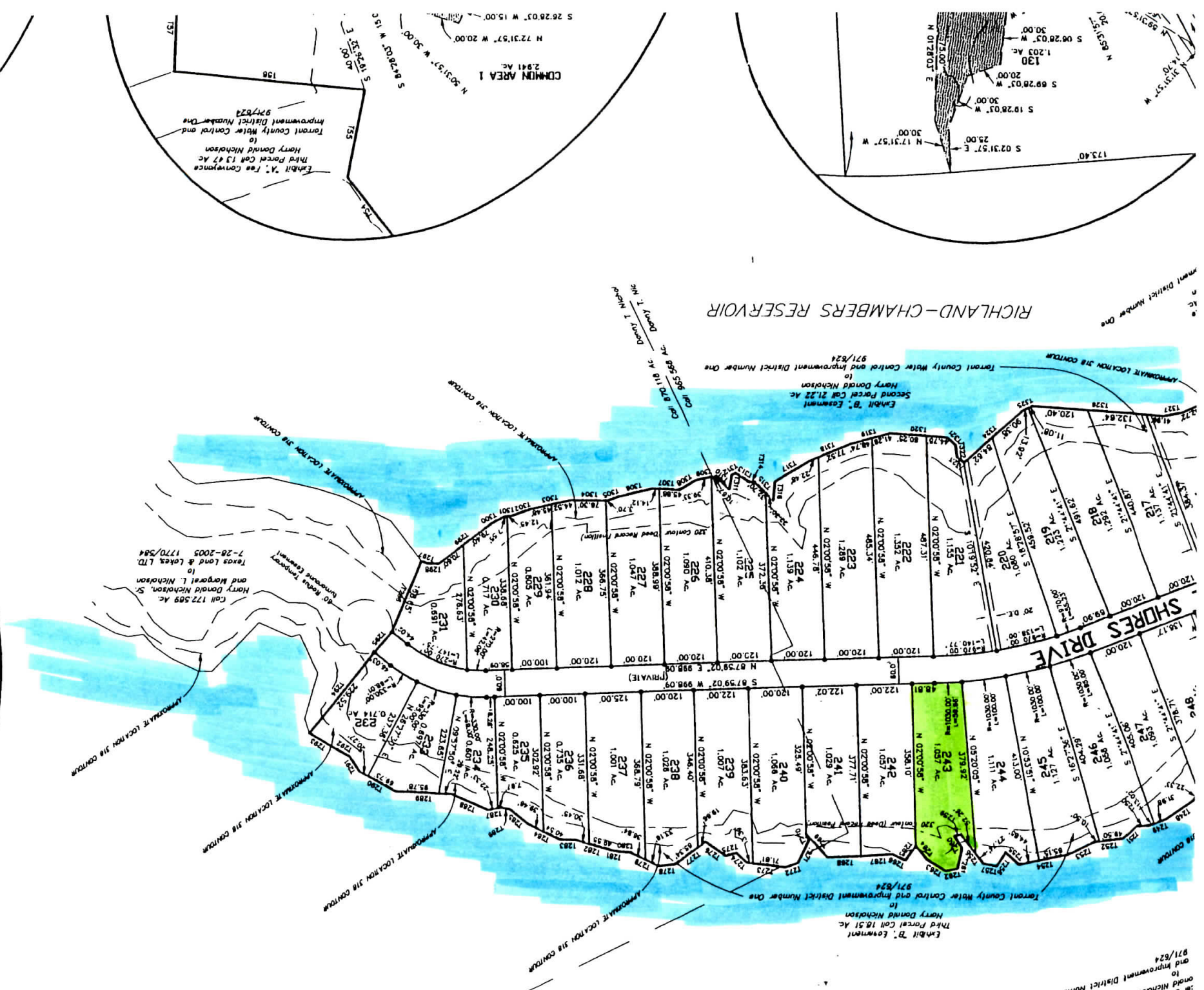


For conveyance  
of Parcel 218 AC  
to  
Harry Donald  
and Improvement  
District Number One  
971/824

RICHLAND-CHAMBERS RESERVOIR



130  
S 08°28'03" W 20.00'  
S 09°28'03" W 30.00'  
S 02°31'57" E 25.00'  
S 02°31'57" E 30.00'  
N 17°31'57" W 30.00'  
N 01°28'03" E 30.00'

130  
S 08°28'03" W 20.00'  
S 09°28'03" W 30.00'  
S 02°31'57" E 25.00'  
S 02°31'57" E 30.00'  
N 17°31'57" W 30.00'  
N 01°28'03" E 30.00'

130  
S 08°28'03" W 20.00'  
S 09°28'03" W 30.00'  
S 02°31'57" E 25.00'  
S 02°31'57" E 30.00'  
N 17°31'57" W 30.00'  
N 01°28'03" E 30.00'

130  
S 08°28'03" W 20.00'  
S 09°28'03" W 30.00'  
S 02°31'57" E 25.00'  
S 02°31'57" E 30.00'  
N 17°31'57" W 30.00'  
N 01°28'03" E 30.00'

130  
S 08°28'03" W 20.00'  
S 09°28'03" W 30.00'  
S 02°31'57" E 25.00'  
S 02°31'57" E 30.00'  
N 17°31'57" W 30.00'  
N 01°28'03" E 30.00'

130  
S 08°28'03" W 20.00'  
S 09°28'03" W 30.00'  
S 02°31'57" E 25.00'  
S 02°31'57" E 30.00'  
N 17°31'57" W 30.00'  
N 01°28'03" E 30.00'

130  
S 08°28'03" W 20.00'  
S 09°28'03" W 30.00'  
S 02°31'57" E 25.00'  
S 02°31'57" E 30.00'  
N 17°31'57" W 30.00'  
N 01°28'03" E 30.00'

130  
S 08°28'03" W 20.00'  
S 09°28'03" W 30.00'  
S 02°31'57" E 25.00'  
S 02°31'57" E 30.00'  
N 17°31'57" W 30.00'  
N 01°28'03" E 30.00'

130  
S 08°28'03" W 20.00'  
S 09°28'03" W 30.00'  
S 02°31'57" E 25.00'  
S 02°31'57" E 30.00'  
N 17°31'57" W 30.00'  
N 01°28'03" E 30.00'

COMMON AREA 1  
2.841 AC.  
N 50°31'57" W 20.00'  
S 07°28'03" W 30.00'  
S 19°36'53" E 40.00'

COMMON AREA 1  
2.841 AC.  
N 50°31'57" W 20.00'  
S 07°28'03" W 30.00'  
S 19°36'53" E 40.00'

COMMON AREA 1  
2.841 AC.  
N 50°31'57" W 20.00'  
S 07°28'03" W 30.00'  
S 19°36'53" E 40.00'

COMMON AREA 1  
2.841 AC.  
N 50°31'57" W 20.00'  
S 07°28'03" W 30.00'  
S 19°36'53" E 40.00'

COMMON AREA 1  
2.841 AC.  
N 50°31'57" W 20.00'  
S 07°28'03" W 30.00'  
S 19°36'53" E 40.00'

COMMON AREA 1  
2.841 AC.  
N 50°31'57" W 20.00'  
S 07°28'03" W 30.00'  
S 19°36'53" E 40.00'

COMMON AREA 1  
2.841 AC.  
N 50°31'57" W 20.00'  
S 07°28'03" W 30.00'  
S 19°36'53" E 40.00'

COMMON AREA 1  
2.841 AC.  
N 50°31'57" W 20.00'  
S 07°28'03" W 30.00'  
S 19°36'53" E 40.00'

COMMON AREA 1  
2.841 AC.  
N 50°31'57" W 20.00'  
S 07°28'03" W 30.00'  
S 19°36'53" E 40.00'

Exhibit A, For conveyance  
Third Parcel Cont 13.47 AC  
to  
Harry Donald Nicholson  
Tarrant County Water Control and  
Improvement District Number One  
971/824

Exhibit A, For conveyance  
Third Parcel Cont 13.47 AC  
to  
Harry Donald Nicholson  
Tarrant County Water Control and  
Improvement District Number One  
971/824

Exhibit A, For conveyance  
Third Parcel Cont 13.47 AC  
to  
Harry Donald Nicholson  
Tarrant County Water Control and  
Improvement District Number One  
971/824

Exhibit A, For conveyance  
Third Parcel Cont 13.47 AC  
to  
Harry Donald Nicholson  
Tarrant County Water Control and  
Improvement District Number One  
971/824

Exhibit A, For conveyance  
Third Parcel Cont 13.47 AC  
to  
Harry Donald Nicholson  
Tarrant County Water Control and  
Improvement District Number One  
971/824

Exhibit A, For conveyance  
Third Parcel Cont 13.47 AC  
to  
Harry Donald Nicholson  
Tarrant County Water Control and  
Improvement District Number One  
971/824

Exhibit A, For conveyance  
Third Parcel Cont 13.47 AC  
to  
Harry Donald Nicholson  
Tarrant County Water Control and  
Improvement District Number One  
971/824

Exhibit A, For conveyance  
Third Parcel Cont 13.47 AC  
to  
Harry Donald Nicholson  
Tarrant County Water Control and  
Improvement District Number One  
971/824

Exhibit A, For conveyance  
Third Parcel Cont 13.47 AC  
to  
Harry Donald Nicholson  
Tarrant County Water Control and  
Improvement District Number One  
971/824

Approximate Location 318 Contour  
S 07°58'02" E 998.08' (PRIVATE)

Approximate Location 318 Contour  
S 07°58'02" E 998.08' (PRIVATE)

Approximate Location 318 Contour  
S 07°58'02" E 998.08' (PRIVATE)

Approximate Location 318 Contour  
S 07°58'02" E 998.08' (PRIVATE)

Approximate Location 318 Contour  
S 07°58'02" E 998.08' (PRIVATE)

Approximate Location 318 Contour  
S 07°58'02" E 998.08' (PRIVATE)

Approximate Location 318 Contour  
S 07°58'02" E 998.08' (PRIVATE)

Approximate Location 318 Contour  
S 07°58'02" E 998.08' (PRIVATE)

Approximate Location 318 Contour  
S 07°58'02" E 998.08' (PRIVATE)

Approximate Location 318 Contour  
S 07°58'02" E 998.08' (PRIVATE)

Approximate Location 318 Contour  
S 07°58'02" E 998.08' (PRIVATE)

Approximate Location 318 Contour  
S 07°58'02" E 998.08' (PRIVATE)

Approximate Location 318 Contour  
S 07°58'02" E 998.08' (PRIVATE)

Approximate Location 318 Contour  
S 07°58'02" E 998.08' (PRIVATE)

Approximate Location 318 Contour  
S 07°58'02" E 998.08' (PRIVATE)

Approximate Location 318 Contour  
S 07°58'02" E 998.08' (PRIVATE)

Approximate Location 318 Contour  
S 07°58'02" E 998.08' (PRIVATE)

Approximate Location 318 Contour  
S 07°58'02" E 998.08' (PRIVATE)

Approximate Location 318 Contour  
S 07°58'02" E 998.08' (PRIVATE)

Approximate Location 318 Contour  
S 07°58'02" E 998.08' (PRIVATE)

Approximate Location 318 Contour  
S 07°58'02" E 998.08' (PRIVATE)

Approximate Location 318 Contour  
S 07°58'02" E 998.08' (PRIVATE)

Approximate Location 318 Contour  
S 07°58'02" E 998.08' (PRIVATE)

Approximate Location 318 Contour  
S 07°58'02" E 998.08' (PRIVATE)

Approximate Location 318 Contour  
S 07°58'02" E 998.08' (PRIVATE)

Approximate Location 318 Contour  
S 07°58'02" E 998.08' (PRIVATE)

Approximate Location 318 Contour  
S 07°58'02" E 998.08' (PRIVATE)

Approximate Location 318 Contour  
S 07°58'02" E 998.08' (PRIVATE)

Approximate Location 318 Contour  
S 07°58'02" E 998.08' (PRIVATE)

Approximate Location 318 Contour  
S 07°58'02" E 998.08' (PRIVATE)

Approximate Location 318 Contour  
S 07°58'02" E 998.08' (PRIVATE)

Approximate Location 318 Contour  
S 07°58'02" E 998.08' (PRIVATE)

Approximate Location 318 Contour  
S 07°58'02" E 998.08' (PRIVATE)

Approximate Location 318 Contour  
S 07°58'02" E 998.08' (PRIVATE)

Approximate Location 318 Contour  
S 07°58'02" E 998.08' (PRIVATE)

Approximate Location 318 Contour  
S 07°58'02" E 998.08' (PRIVATE)

Approximate Location 318 Contour  
S 07°58'02" E 998.08' (PRIVATE)

Approximate Location 318 Contour  
S 07°58'02" E 998.08' (PRIVATE)

Approximate Location 318 Contour  
S 07°58'02" E 998.08' (PRIVATE)

Approximate Location 318 Contour  
S 07°58'02" E 998.08' (PRIVATE)

Approximate Location 318 Contour  
S 07°58'02" E 998.08' (PRIVATE)

Approximate Location 318 Contour  
S 07°58'02" E 998.08' (PRIVATE)

Approximate Location 318 Contour  
S 07°58'02" E 998.08' (PRIVATE)

Approximate Location 318 Contour  
S 07°58'02" E 998.08' (PRIVATE)

Approximate Location 318 Contour  
S 07°58'02" E 998.08' (PRIVATE)

Approximate Location 318 Contour  
S 07°58'02" E 998.08' (PRIVATE)

Approximate Location 318 Contour  
S 07°58'02" E 998.08' (PRIVATE)

Approximate Location 318 Contour  
S 07°58'02" E 998.08' (PRIVATE)

Approximate Location 318 Contour  
S 07°58'02" E 998.08' (PRIVATE)

Approximate Location 318 Contour  
S 07°58'02" E 998.08' (PRIVATE)

Approximate Location 318 Contour  
S 07°58'02" E 998.08' (PRIVATE)

Approximate Location 318 Contour  
S 07°58'02" E 998.08' (PRIVATE)

Approximate Location 318 Contour  
S 07°58'02" E 998.08' (PRIVATE)

Approximate Location 318 Contour  
S 07°58'02" E 998.08' (PRIVATE)

Approximate Location 318 Contour  
S 07°58'02" E 998.08' (PRIVATE)

Approximate Location 318 Contour  
S 07°58'02" E 998.08' (PRIVATE)

Approximate Location 318 Contour  
S 07°58'02" E 998.08' (PRIVATE)

Approximate Location 318 Contour  
S 07°58'02" E 998.08' (PRIVATE)

Approximate Location 318 Contour  
S 07°58'02" E 998.08' (PRIVATE)

Approximate Location 318 Contour  
S 07°58'02" E 998.08' (PRIVATE)

Approximate Location 318 Contour  
S 07°58'02" E 998.08' (PRIVATE)

Approximate Location 318 Contour  
S 07°58'02" E 998.08' (PRIVATE)

Approximate Location 318 Contour  
S 07°58'02" E 998.08' (PRIVATE)