



Farm, Timber & Recreational Land Brokers

106 First Choice Dr Madison, Ms 39110

Property: Locust Land Company offers 790+/- acres located between Bovina and Vicksburg near the Big Black River, this premium property offers exceptional recreational investment in both land and timber value along with first class lodging and property improvements. The current ownership actively manages the property for trophy whitetails through protein feeding programs, annual & perennial food plots, herd management tactics and camera surveys... Their program has yielded tremendous success with bucks taken annually in the 150-160 inch class. There is also an abundant turkey population that benefits from the food plot program as well... Locust, offers rolling hill terrain with moderate elevation, flat ridgetops, wide creek bottoms and timber that consist largely of mature hardwoods with some natural pine. In summary Locust, is a premium recreational land and timber investment, offering exceptional land and lodging improvements with proven whitetail genetics....

Location: S1 / T15N / R4E & S6 / T15N / R5E Warren County, Mississippi / 8.5 miles East of the Mississippi River at Vicksburg & 2.5 Miles West of the Big Black River Bovina.

Property Breakdown:

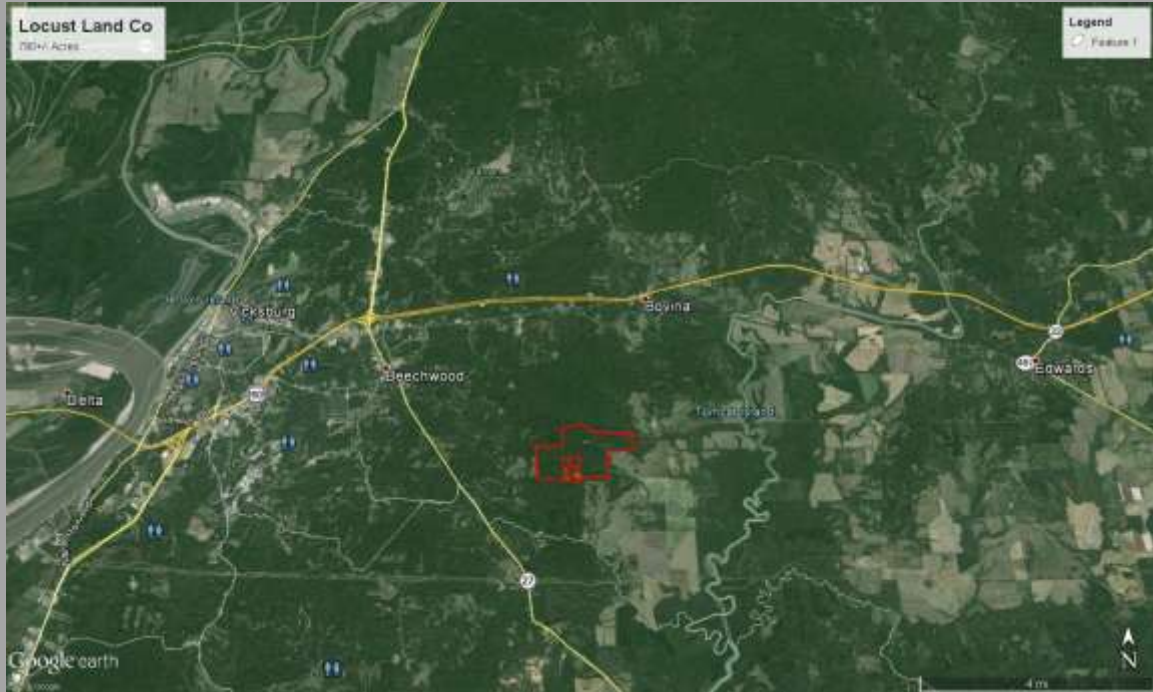
- 760+/- acres Mature Hardwood & Natural Pine
- 25+/-acres open lands
- Creek bottoms & several small ponds

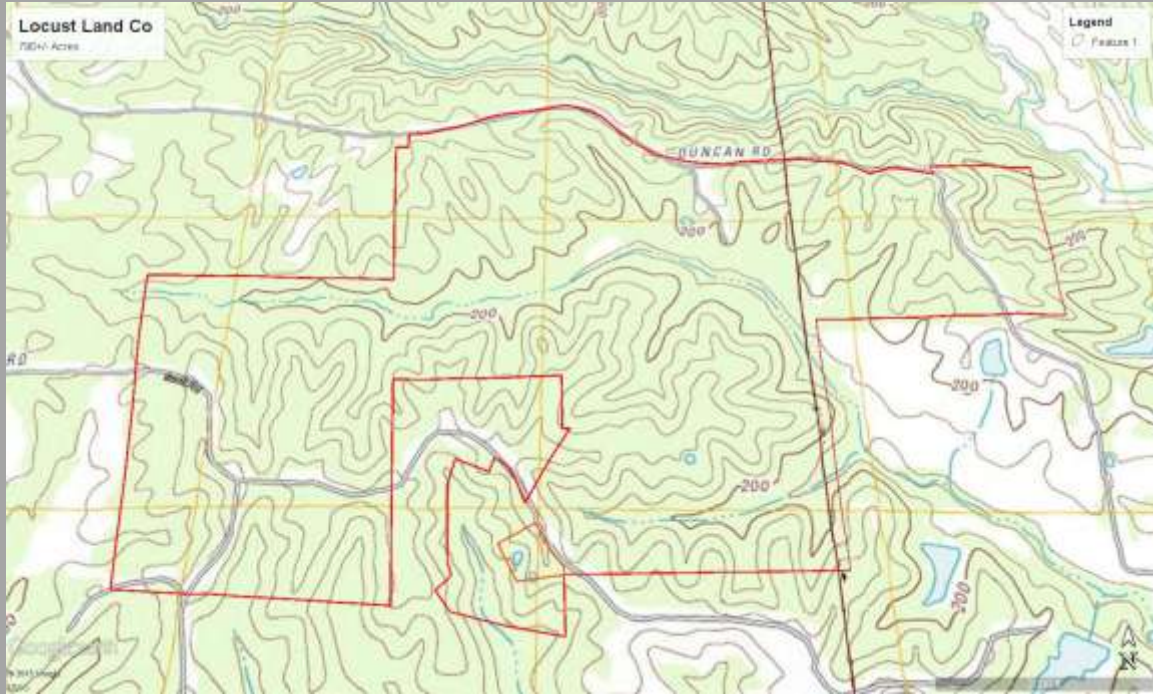
Improvements:

- Two separate custom built cabins
- Custom Shoot Houses
- +/- 22 acres of food plots
- Extensive interior road system
- Equipment Barn w/ utilities
- Gated access points w/ fenced road frontages
- Rifle Range with covered shooting area (125yrd)

Price: \$3,300,000.00

Contact: Jacob Sartain 662-836-6048 or jsartain@sartainsheritage.com



























Contact: www.SartainsHeritage.com / Jacob Sartain 662-836-6048