

LAND FOR SALE

Marsland Mini Ranch



Location:

The property is located to the north side of the town of Marsland, Nebraska, bordered on the north by River Road.

**Legal
Description:**

N1/2NW1/4, Pt. SE1/4NW1/4, Pt., NW1/4NW1/4, Lots 1-6 & 9-10 Block 5, Lots 1-15 Block 1, Lots 104 & 7-12 Block 2, Lots 1-7 Block 6, all in Section 34-T29N-R51W of the 6th P.M., Dawes County, Nebraska.

Acres:

130.66 tax assessed acres

Taxes:

2014 real estate taxes payable in 2015 - \$1,154.96

Land Use:

Primary land use is rangeland. Residence with outbuildings and metal storage building, rangeland adjacent to the home with livestock water from a pump jack. A second tract of rangeland lies east of the BN Railroad tracks with livestock water provided by a windmill.

**Improvements
& Equipment:**

Property includes a one story, 2 bedroom frame home with 900 sq.ft, and a 1,152 sq. ft 2010 Cleary building.

Price:

\$145,000

Comments:

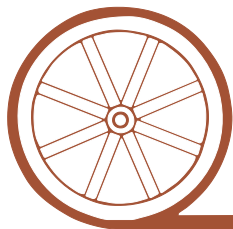
Productive rangeland with improvements. Located just 7.5 miles west of the Box Butte Reservoir which offers many recreational opportunities. Additionally, the Pine Ridge area and the Nebraska National Forest is located just 12 miles to the north of this property.

Contact:

Bruce Dodson; Co-Listing Agent 308-539-4455 or bruce@agriaffiliates.com
Dallas Dodson; Co-Listing Agent 402-389-0319 or dallas@agriaffiliates.com
Mike Polk, Tony Eggleston, Jerry Weaver, Chase Dodson, Don Walker, Roger Luehrs

Agri Affiliates—Providing Farm, Ranch Real Estate Services

Offered Exclusively By:



AGRI AFFILIATES, INC.

...Providing Farm - Ranch Real Estate Services...

NORTH PLATTE OFFICE

P.O. Box 1166

I-80 & US Hwy 83

North Platte, NE 69103

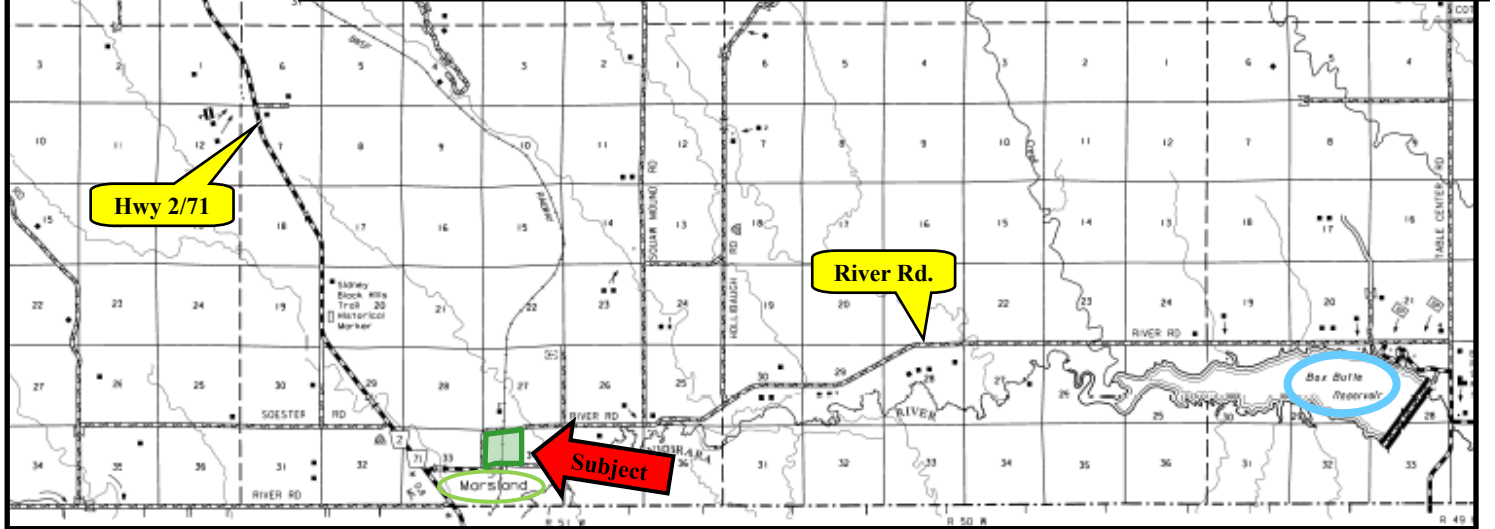
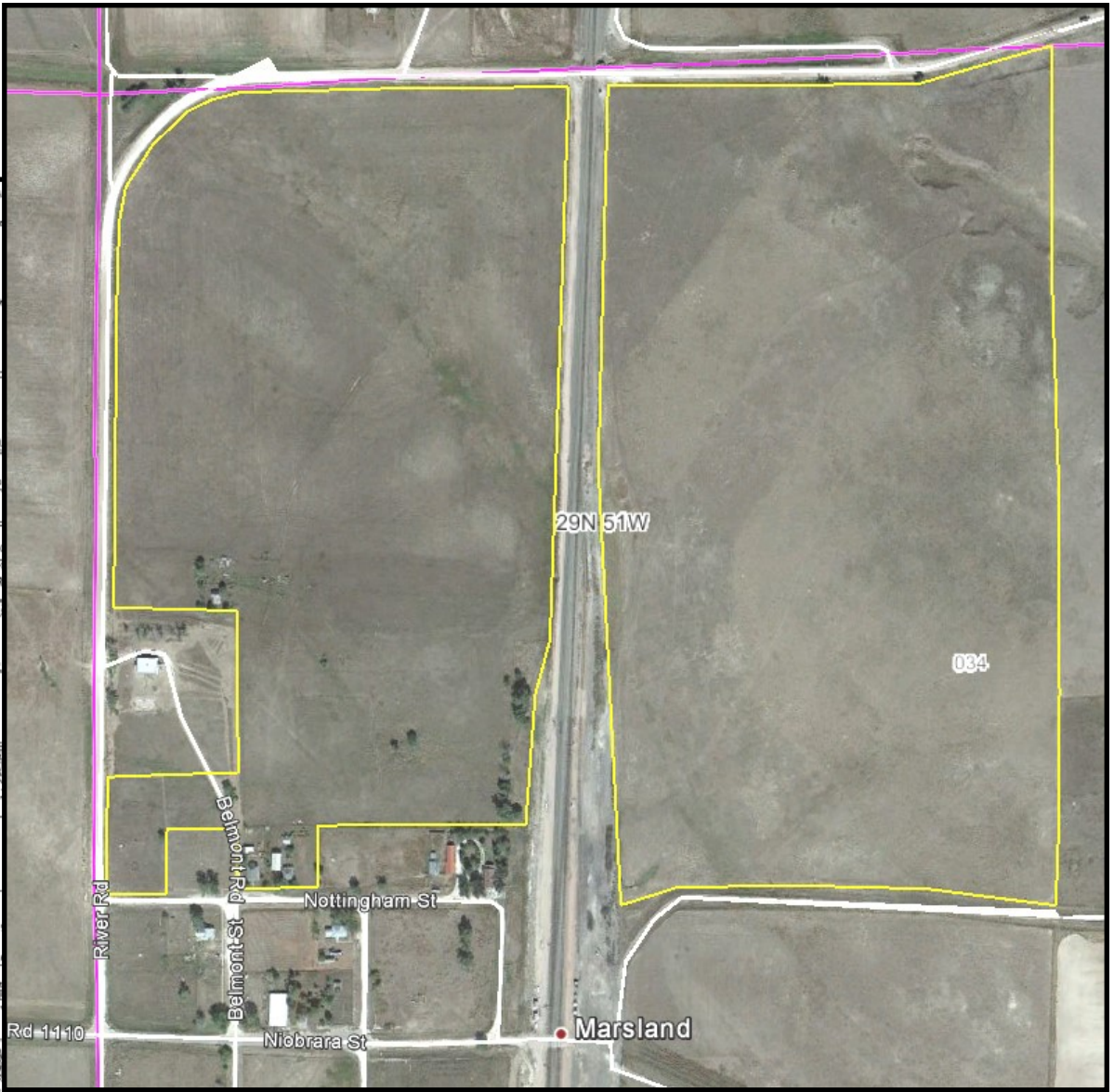
www.agriaffiliates.com

(308) 534-9240

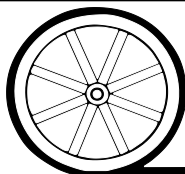
Fax (308) 534-9244

Information contained herein was obtained from sources deemed reliable. We have no reason to doubt the accuracy, but we do not guarantee it. Prospective Buyers should verify all information, including items of income and expense. All maps provided by Agri Affiliates, Inc. are approximations only, to be used as a general guideline, and not intended as survey accurate.





All maps provided by Agri Affiliates, Inc. are approximations only, to be used as a general guideline, and not intended as survey accurate.



AGRI AFFILIATES, INC.

... Providing Farm - Ranch Real Estate Services. ...