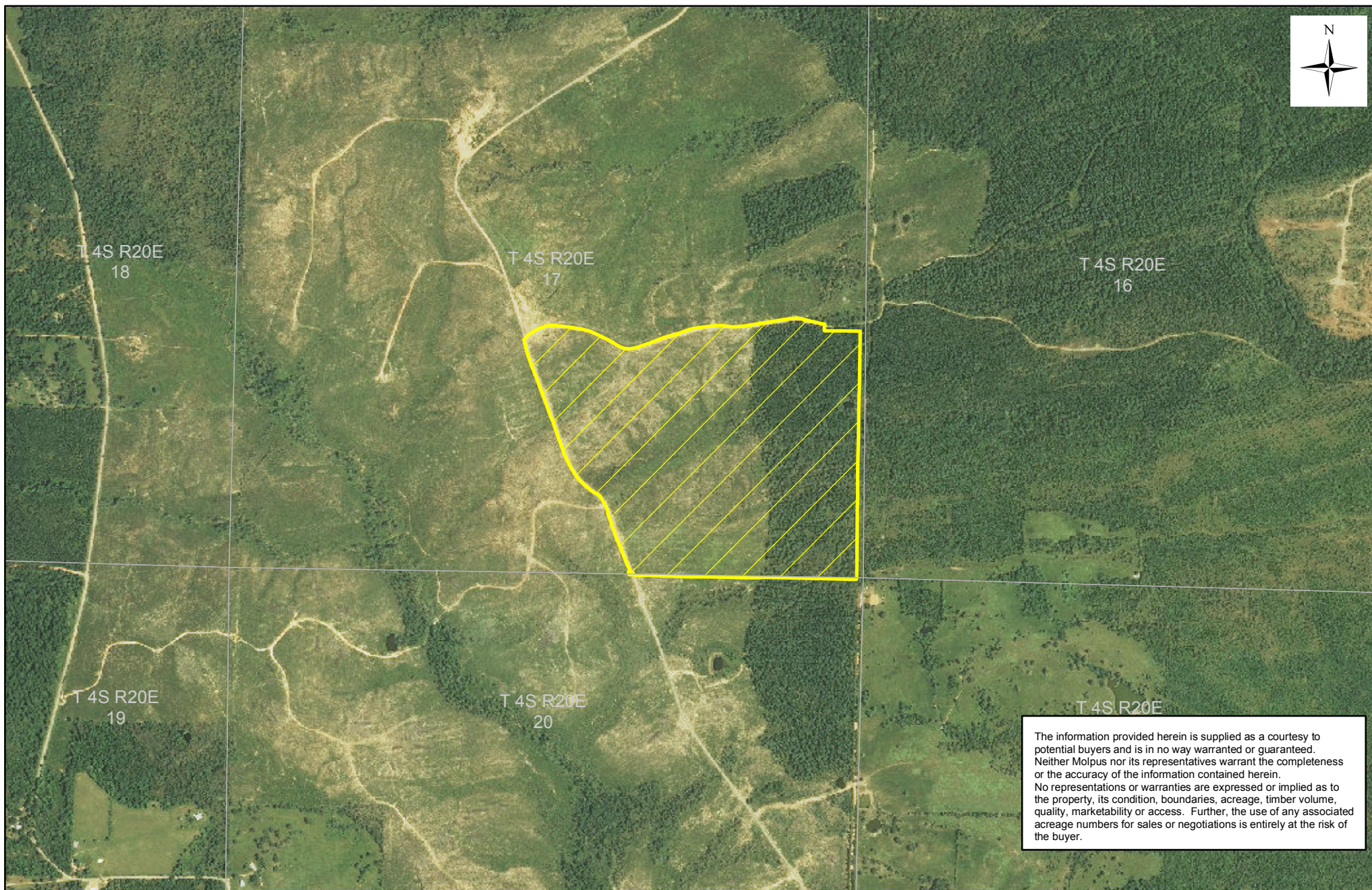


# Caney Creek Timberlands, LLC - Caney Creek Unit (0112) - Compartment 019

## Sale Area - 116 +/- Acres



Pushmataha County, OK  
PEN\_CCTLS0017

Date: 7/29/2014

0 0.125 0.25 0.375 0.5  
Miles



MOLPUS TIMBERLANDS MANAGEMENT, LLC®