

10 of 25 acres Hummingbird Rd.



January 24, 2015

☐ Parcels

Disclaimer: This product is for informational purposes only and has not been prepared for or be suitable for legal, engineering, or surveying purposes. It does not represent an on-the-ground survey and represents only the approximate relative location of boundaries

1:6,117
0 0.05 0.1 0.2 mi
0 0.075 0.15 0.3 km

Source: Esri, DigitalGlobe, GeoEye, Earthstar Geographics, CNES/Airbus DS, USDA, USGS, AEX, Geomatics, Aergrid, IGN, IGP, swisstopo, and

Washington County Appraisal District & BIS Consulting - www.bisconsultants.com
This product and relative contents are the property of the respective governmental entity and BIS Consultants. Use is restricted for official purposes.

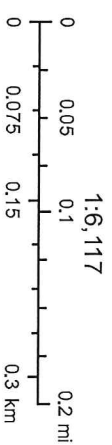
15 of 25 Acres Hummingbird Rd



January 24, 2015

☐ Parcels

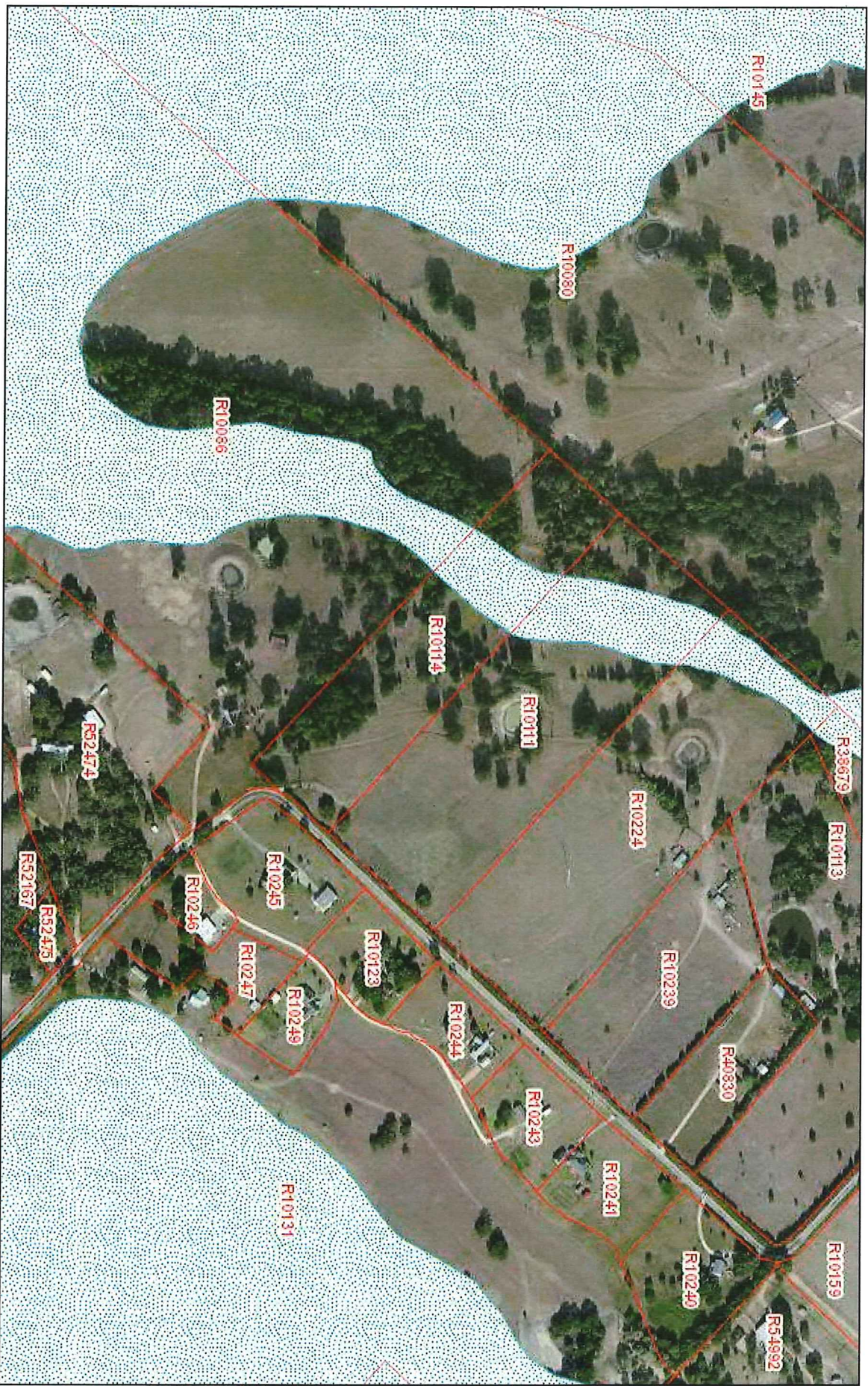
Disclaimer: This product is for informational purposes only and has not been prepared for or be suitable for legal, engineering, or surveying purposes. It does not represent an on-the-ground survey and represents only the approximate relative location of boundaries



Source: Esri, DigitalGlobe, GeoEye, Earthstar, Geographics, CNES/Airbus DS, USDA, USGS, AEX, Getmapping, Aerogrid, IGN, IGP, swisstopo, and

Washington County Appraisal District & BIS Consulting - www.bisconsultants.com
This product and relative contents are the property of the respective governmental entity and BIS Consultants. Use is restricted for official purposes.

25 acres Hummingbird Rd.

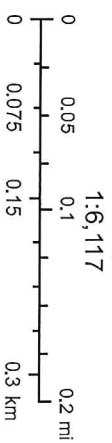


January 24, 2015

Parcels

Flood Plain

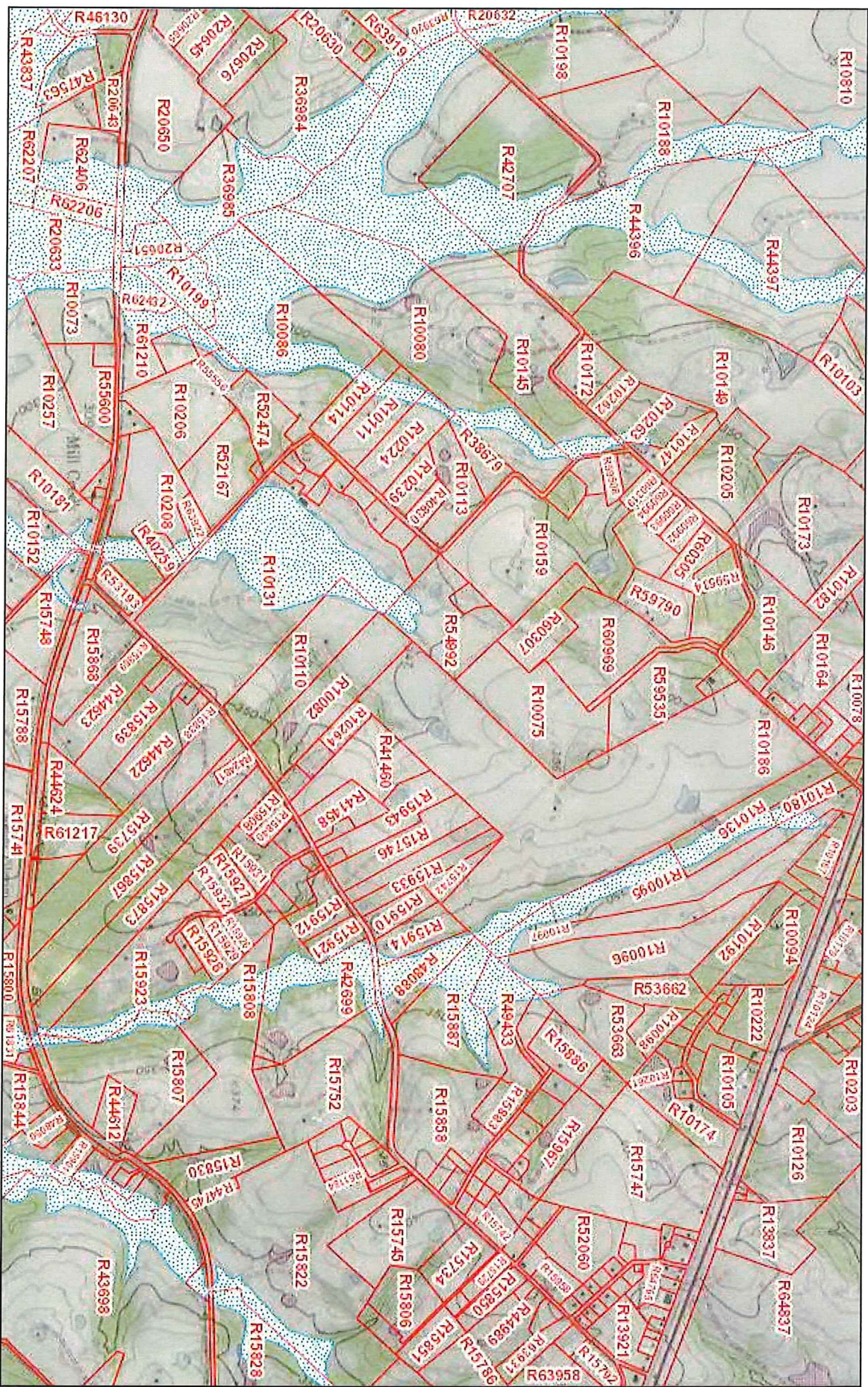
Disclaimer: This product is for informational purposes only and has not been prepared for or be suitable for legal, engineering, or surveying purposes. It does not represent an on-the-ground survey and represents only the approximate relative location of boundaries



Source: Esri, DigitalGlobe, GeoEye, Earthstar Geographics, CNES/Airbus DS, USDA, USGS, AEX, Getmapping, Aerogrid, IGN, IGP, swisstopo, and

Washington County Appraisal District & BIS Consulting - www.bisconsultants.com
This product and relative contents are the property of the respective governmental entity and BIS Consultants. Use is restricted for official purposes.

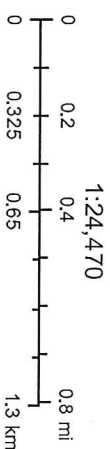
25 acres Hummingbird Rd.



January 24, 2015

- Parcels
- Flood Plain

Disclaimer: This product is for informational purposes only and has not been prepared for or be suitable for legal, engineering, or surveying purposes. It does not represent an on-the-ground survey and represents only the approximate relative location of boundaries



Source: Esri, DigitalGlobe, GeoEye, Earthstar Geographics, CNES/Airbus DS, USDA, USGS, AEX, Geomatics, Aerogrid, IGN, IGP, swisstopo, and

Washington County Appraisal District & BIS Consulting - www.bisconsultants.com
This product and relative contents are the property of the respective governmental entity and BIS Consultants. Use is restricted for official purposes.