

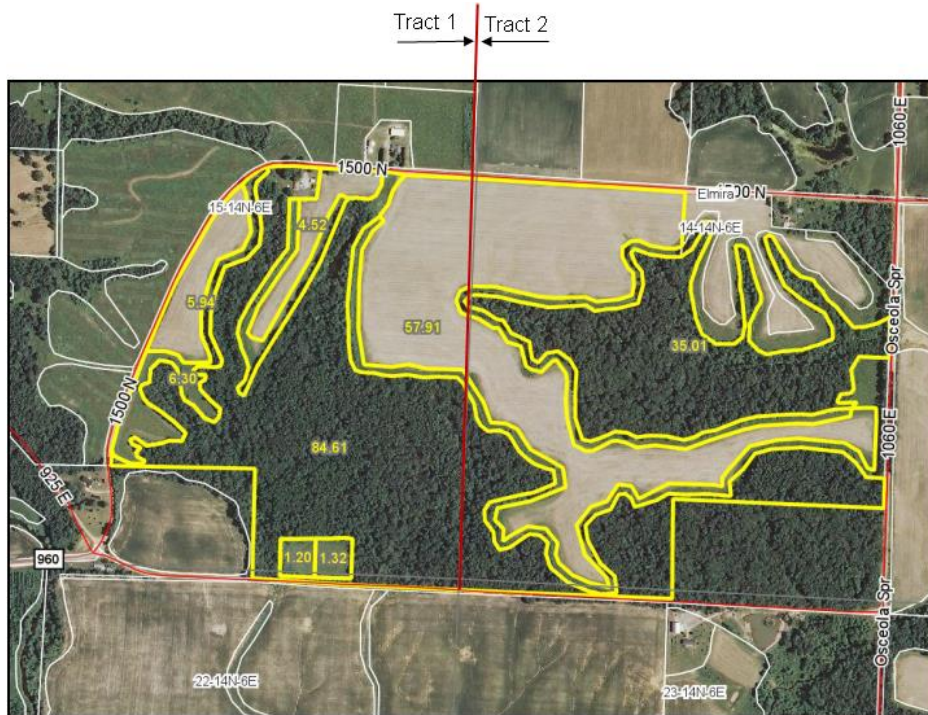
Calvano Farm
227.8 Acres
Stark County, Illinois



Located 1 mile south of Osceola, Illinois

I-80 at Exit 45: 18 miles south via Routes 40/93 & Osceola Road

Peoria IL: 34 miles north via Routes 40/93 & Osceola Road



Source: Agridata Inc.

Highlights:

Income:

78.5 FSA crop acres

38.4 CRP acres \$5,737
annual payments

Recreation/Hunting:

About 50% Timber

No buildings

Roads on 4 sides of farm

Tract 1 (west) 92 acres priced at \$391,000
Tract 2 (east) 135.8 acres priced at \$617,890

(309) 687-6010 - Call us for a complete brochure on the farm

Doug Fehr, Broker

(309) 687-6009

Norman Bjorling, Peoria Managing Broker

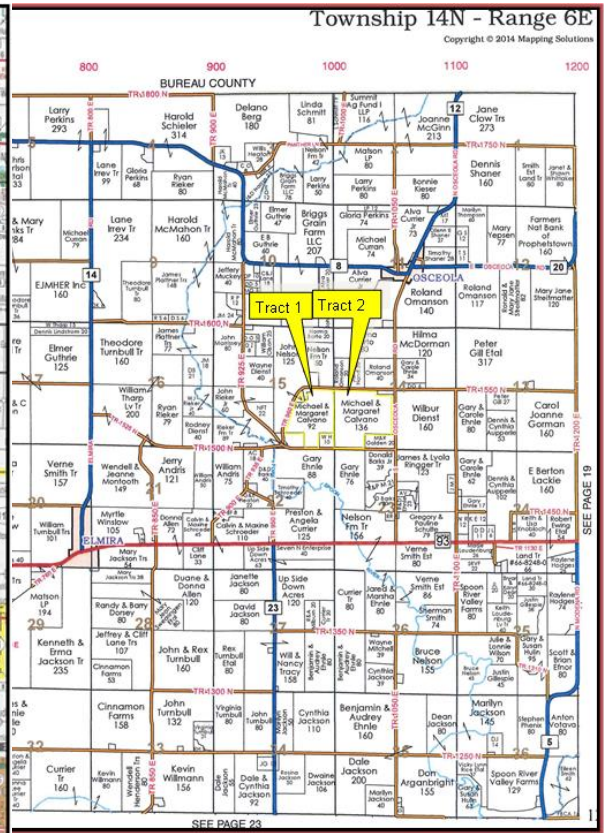
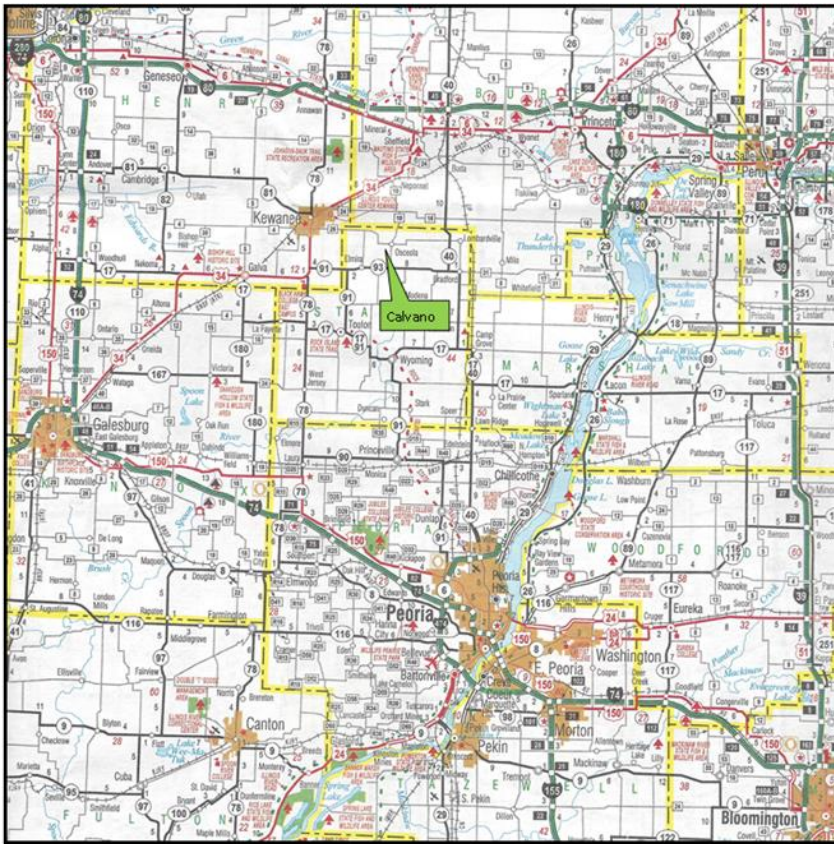
(309) 678-1019

4530 N. University, Peoria, IL 61614

DISCLAIMER:

The information provided is believed to be accurate. However, it is subject to verification and no liability for errors or omissions is assumed. There are no warranties, expressed or implied, as to the information herein contained, and it is recommended that all buyers should make an independent inspection of the property. Douglas Fehr and Norman Bjorling are designated agents with Soy Capital Ag Services and represent the Seller in this transaction.

WWW.SoyCapitalAg.com



1 mile south of Osceola, Illinois on west side of "Osceola Road." Road 1550N is the north side and there is a "fair weather" road on the south side of the farm.

On Interstate I-80 at Exit 45 take highway 40 south 11½ miles to "Osceola Road" and turn right (west) on "Osceola Road." Go west 6 miles to Road 1060E (this is Osceola). Go south 1 mile to Road 1550N and turn west which is the north side of the Calvano Farm.



Peoria, Illinois take Route 40 north to west of Bradford. Proceed west on Route 93 for 5½ miles, turn north on "Osceola Road" for 1½ miles. Turn west on Road 1550N and the Calvano Farm is on the south.