



[Home Page](#) → [Recreation](#) → Half Moon-Gum Slough

Half Moon-Gum Slough



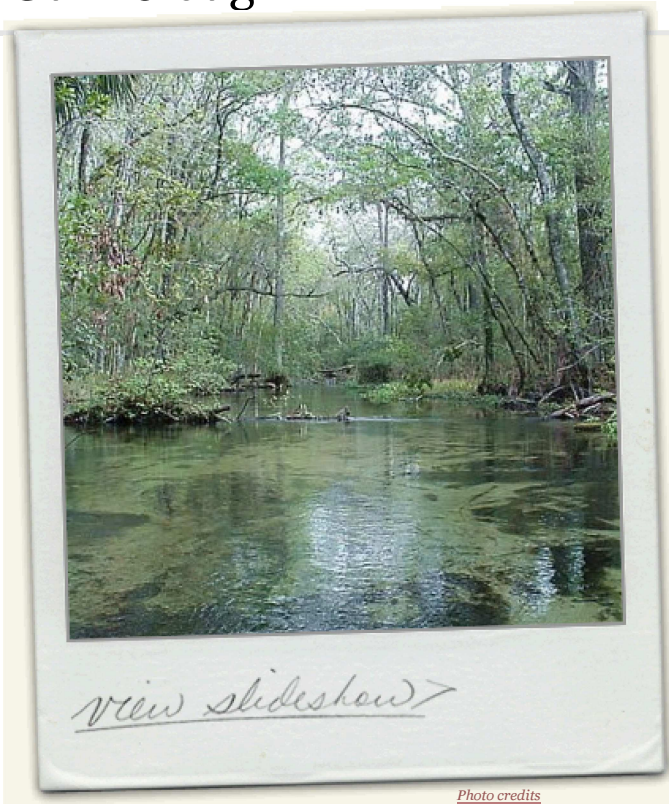
[Guidelines for Use
of District Lands](#)

[Species Field Guide](#)

[Volunteer](#)

[Why Does the
District Buy Lands?](#)

[Recreation
Evaluation 2013](#)



Visit this Property



Street Address

8864 CR 247
Lake Panasoffkee, FL 33538
[\(Google map\)](#)

Size

9,480 acres – Half Moon Wildlife
Management Area

Hours of Operation

Daily from sunrise to sunset.

[More info below...](#)

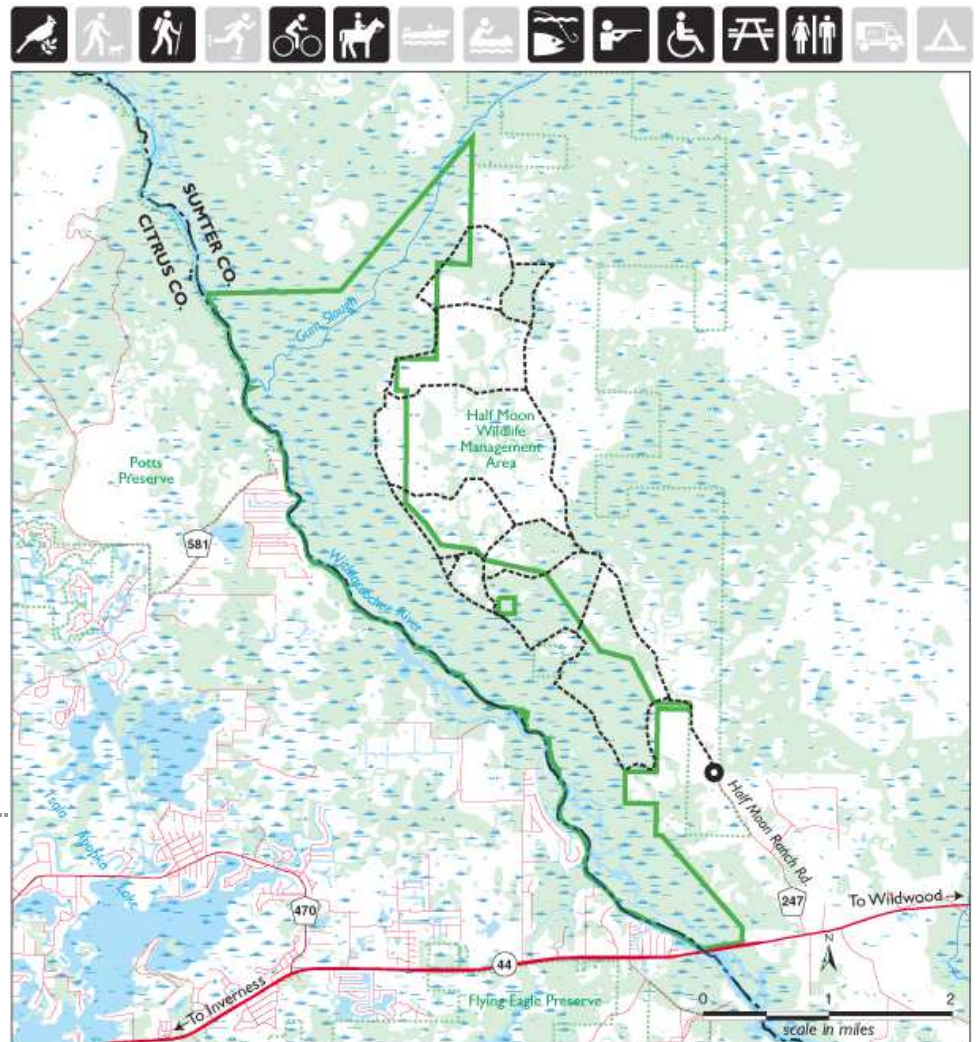
About Half Moon-Gum Slough

[Email this info to a friend »](#)

This property was acquired to protect and preserve natural water resources and the water quality of the Withlacoochee River, Gum Slough and associated tributaries. The Withlacoochee River, Gum Slough and Gum Springs Run are located adjacent to the property and were designated [Outstanding Florida Waters](#) in 1989. Gum Slough is a four-mile-long spring run that flows into the Withlacoochee River. The water in Gum Slough comes from several springs, which makes it remarkably clear and appealing. For the most part, the riverine shores along the property are still natural and undeveloped. The upland areas of the property are a mixture of natural pine flatwoods and oak hammock.

The [Florida Fish and Wildlife Conservation Commission](#) (FWC) owns the property along the eastern boundary of the District's property. These ownerships combined represent 9,480 acres of public lands known as the [Half Moon Wildlife Management Area](#), which is managed by the FWC.

Recreational Opportunities



Printable Map
PDF

Bicycling

- 24 miles of designated or marked multiuse trails.
- Use only marked trails.

- Florida law requires bicyclists under 16 to wear helmets.

Equestrian Use

- 24 miles of marked or designated multiuse trails.
- Each rider must carry proof of horse’s current negative Coggins test.
- Equestrian use not permitted during hunting seasons.
- Florida law requires equestrians under 16 to wear helmets.

Fishing

- Designated freshwater ponds open for fishing.
- Contact [FWC](#) for license requirements.

Hiking

- 24 miles of trails.
- During hunts, hikers are encouraged to wear hunter orange or other bright color above the waist.
- Wet crossings are present along tram road.

Hunting

- Contact [FWC](#) for information regarding license requirements and permits.
- FWC rules and regulations must be observed throughout the year.

Picnic Facilities

- Picnic facilities throughout property.

[Make a Reservation »](#)

Access and Parking

- Travel west on SR 44 approximately 7 miles to CR 247. Head north on CR 247 to public entrance gate.
- ADA access and facilities available.

Restrooms and Water

Restrooms and water available at check station.

Location

Northwestern Sumter County, northeast of Inverness

Nearby Recreation Lands

- [Flying Eagle Preserve](#)
- [Hálpata Tastanaki Preserve](#)
- [Lake Panasoffkee](#)
- [Potts Preserve](#)
- [Two Mile Prairie](#)
- [Withlacoochee State Forest](#)

For More Information

Florida Fish and Wildlife Conservation Commission, (352) 732-1225

