

200 Acres M/L Wayne County, Iowa



Price: \$720,000

Description: 200 acre farm located just a mile north of Clio Iowa. Nice cattle feedlot with 432 feet of fence line bunk in great condition most of it has a cement apron. Working shed is in place and can be complete by adding a tub and alley. Lots of continuous fence for a low maintenance operation. All lots are on rural water. There are 138.28 FSA tillable acres carrying a CSR of 42.1 and a CRS2 of 47.6. Property can be accessed by gravel road from three sides.

Farm Program Information:

191.2 FSA acres, 138.28 FSA tillable acres

Directions: From Lineville: Travel North on Highway 65 for 3.75 miles, then turn East on J54/Edison/South Street for 2.5 miles into Clio. Head North on 65th Street for 0.75 miles and the property will be on the West side of the road. The property is also bordered by Euclid Street and 55th Street.

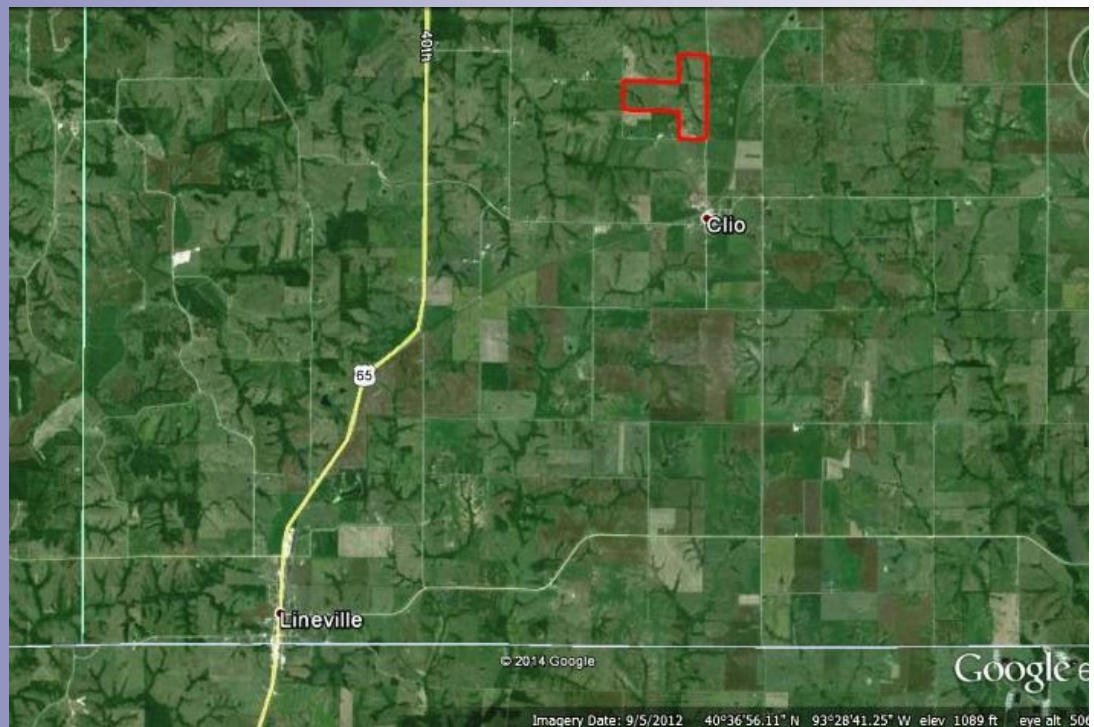
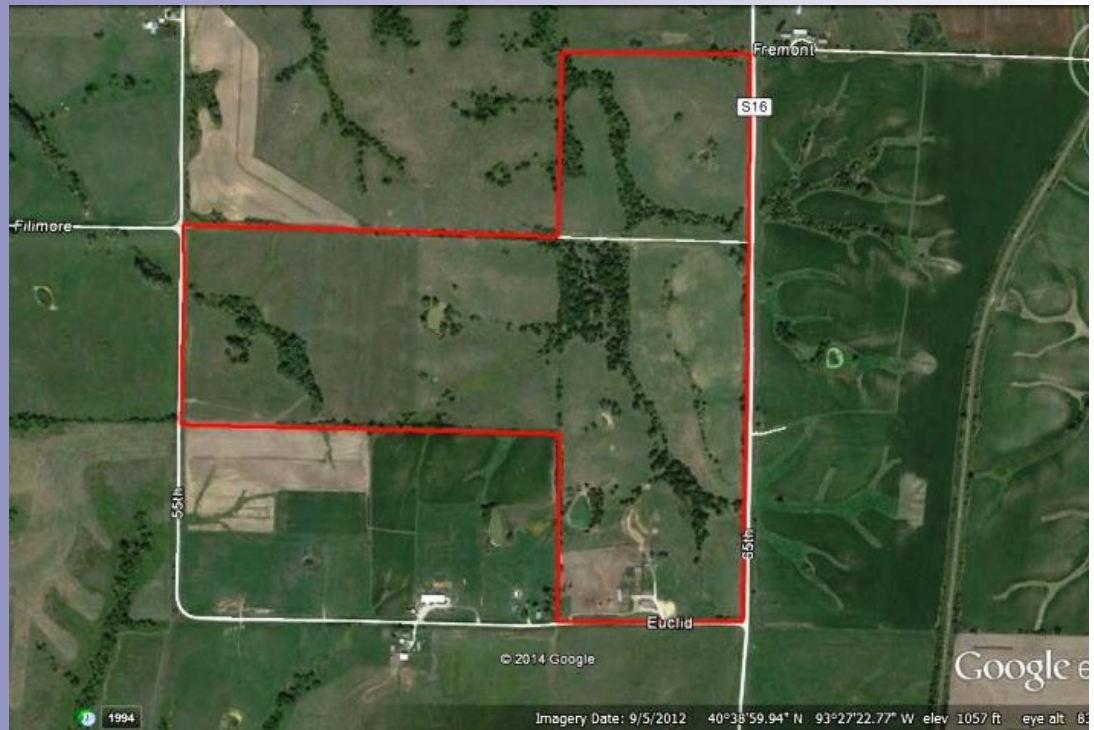
Taxes: \$1,524.00

Daran Becker

P: 515.961.0247

C: 515.979.3498

Daran@PeoplesCompany.com



Additional information can be found on our website: **LISTING # 12005**

© 2014 Peoples Company We obtained the information above from sources we believe to be reliable. However, we have not verified its accuracy and make no guarantee, warranty or representation about it. It is submitted subject to the possibility of errors, omissions, change of price, rental or other conditions, prior sale, lease or financing, or withdrawal without notice. We include projections, opinions, assumptions or estimates for example only and they may not represent current or future performance of the property. You and your tax and legal advisors should conduct your own investigation of the property and transaction.