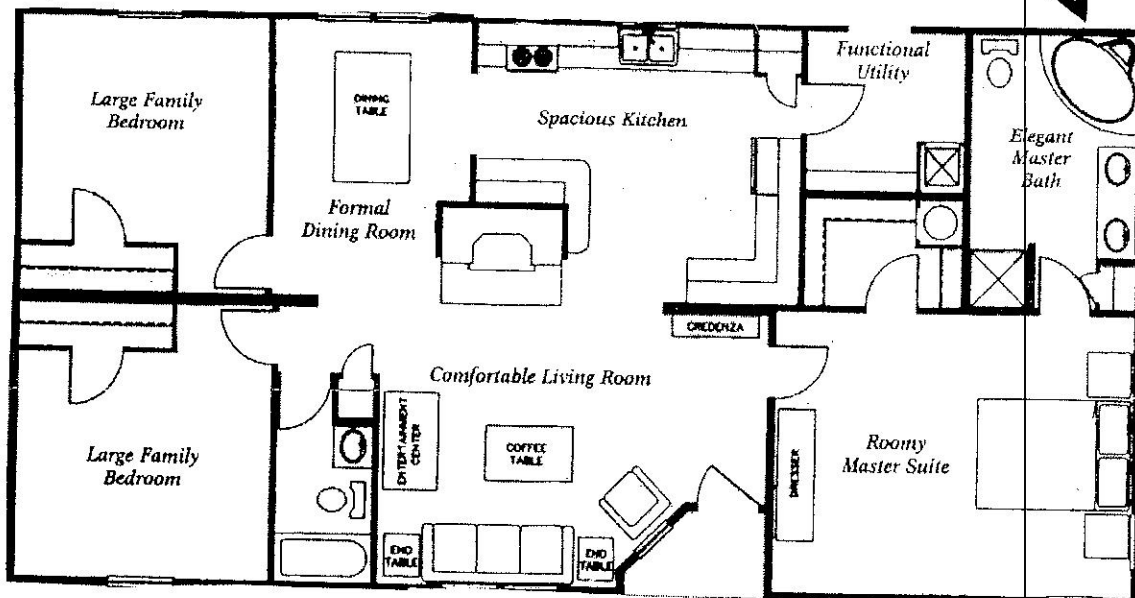


THE DREAM

by *Clayton*



Exterior

Maintenance-Free Vinyl Siding
Thermo Pane Windows
R 21-11-11 Insulation
Residential Gable with Recessed Entry
Steel Entry Door with Dead Bolt
Cottage Rear Door
GFI Receptacle on the Front and Rear

Floors

18oz Trackless Carpet with
Rebond Pad
5/8" OSB Floor Decking
P-15 Midstar Vinyl Floor Covering
in Kitchen and Guest Baths
Vinyl Entry
Mini Blinds
Fireplace with Mirror and Bullet

Baths

Glamour Bath with Separate
Shower - Master
Ceramic Tile Backsplash - Master
Decorator Vanity Light in Both Baths
Linen Storage in Both Baths
Towel and Tissue Holders in
Both Baths

Plumbing and Electrical

200 Amp Electrical Service
40 Gallon Electric Water Heater
Water Shut-Offs Throughout
Ceiling Fan with Lights in Living Room
and Master Bedroom
15 kw Furnace

Kitchen/Dining Room

General Electric Appliances:
20 Cu. Ft. SxS Refrigerator
30" Electric Range
Dishwasher
Overhead Microwave
Freezer Space
Oak Cabinet Doors
Throughout
White Acrylic Sink
with Sprayer
Fluorescent
Lighting
Adjustable Cabinet
Shelves
Fire Extinguisher
Pantry
Scratch-Resistant Counter Tops
with Ceramic Tile Backsplash
Chandelier
Phone Jack

~~1450~~

Sq Ft.

1456