

HALDERMAN REAL ESTATE SERVICES

HLS# PDB-11498 (14)

800.424.2324 | www.halderman.com

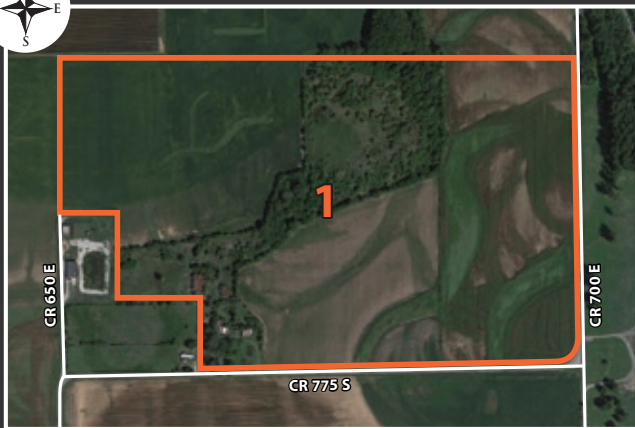
**FOR
SALE**

86.9^{+/-} ACRES

68.96^{+/-} TILLABLE • 16^{+/-} WOODED • 1^{+/-} ACRE HOMESITE

HIGH PERCENT CROPLAND

6658 E 775 S • EDINBURGH



PROPERTY INFORMATION

LOCATION: BETWEEN TAYLORSVILLE AND EDINBURGH ON CR 775 S, JUST EAST OF US HWY 31

ZONING: AGRICULTURAL

TOPOGRAPHY: LEVEL - GENTLY ROLLING

SCHOOL DISTRICT: EDINBURGH

COMMUNITY SCHOOL CORPORATION

ANNUAL TAXES: \$2,734.84

BLUE RIVER TWP • JOHNSON COUNTY



DAVE BONNELL

COLUMBUS, IN

812.343.4313

daveb@halderman.com



MICHAEL BONNELL

GREENFIELD, IN

812.343.6036

michaelb@halderman.com

HALDERMAN REAL ESTATE SERVICES

PO Box 297 • Wabash, IN 46992

"Farm & Transitional Real Estate
Specialists Since 1930"

800.424.2324

www.halderman.com

86.9+/- ACRES

68.96+/- TILLABLE • 16+/- WOODED • 1+/- ACRE HOMESITE

HIGH PERCENT CROPLAND

6658 E 775 S • EDINBURGH

**FOR
SALE**

**BLUE RIVER TWP
JOHNSON COUNTY**



SOILS



Code	Soil Description <small>Field borders provided by Farm Service Agency as of 5/21/2008. Soils data provided by USDA and NRCS.</small>	Acres	Soybeans	Corn
FoA	Fox loam, 0 to 2 percent slopes	35.60	35	100
OcA	Ockley loam, 0 to 2 percent slopes	12.49	47	135
FoB2	Fox loam, 2 to 6 percent slopes, eroded	6.76	33	95
We	Westland clay loam	6.38	46	165
MnB2	Miami silt loam, 2 to 6 percent slopes, eroded	3.93		
MnC2	Miami silt loam, 6 to 12 percent slopes, eroded	2.28		
FxC2	Fox complex, 6 to 12 percent slopes, eroded	1.34	29	83
HeF	Hennepin loam, 25 to 50 percent slopes	0.18		
Weighted Average			34.6	102.3



NEW!

Halderman Real Estate App
Available on Android & Apple iOS

