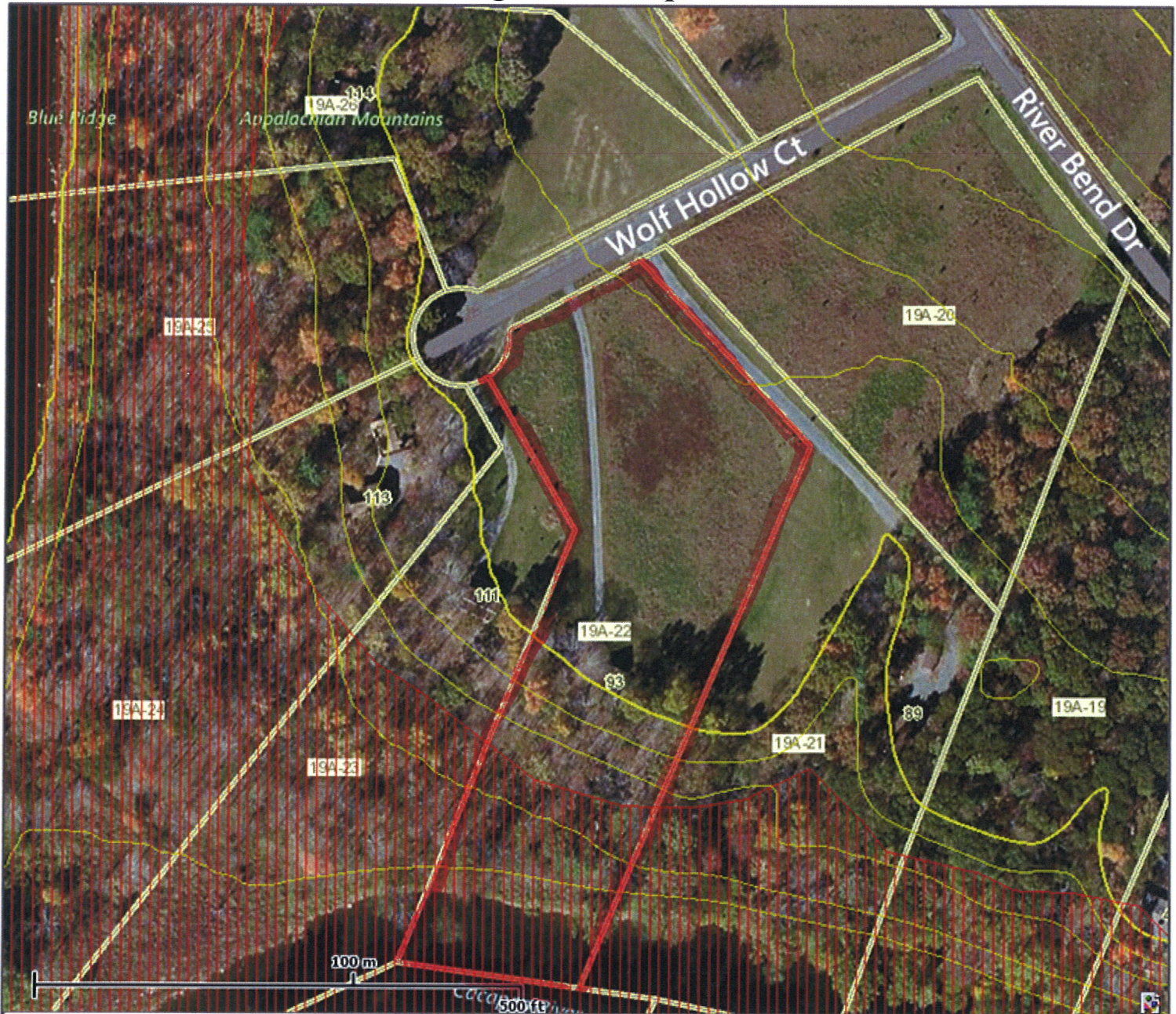
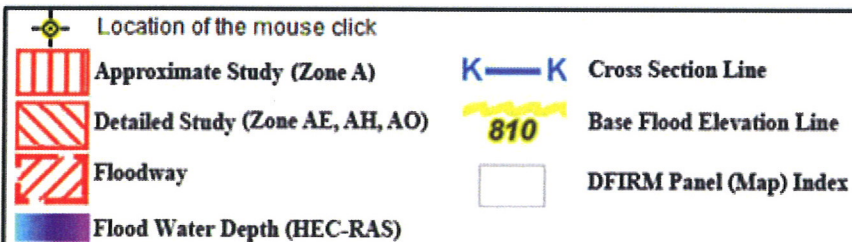


# higinbotham plat



This map is not the official regulatory FIRM or DFIRM. Its purpose is to assist with determining potential flood risk for the selected location.

Map Created on 9/8/2014



User Notes:

## Disclaimer:

The online map is for use in administering the National Flood Insurance Program. It does not necessarily identify all areas subject to flooding, particularly from local drainage sources of small size. To obtain more detailed information in areas where Base Flood Elevations have been determined, users are encouraged to consult the latest Flood Profile data contained in the official flood insurance study. These studies are available online at [www.msc.fema.gov](http://www.msc.fema.gov).

WV Flood Tool is supported by FEMA, WV NFIP Office, and WV GIS Technical Center  
(<http://www.MapWV.gov/flood>)

## Flood Hazard Area:

Advisory Flood Height: N/A

Water Depth: N/A

Elevation: N/A

Location (long, lat):

Location (UTM 17N):

FEMA Issued Flood Map:

Contacts:

CRS Information:

Flood Profile: No Profile

HEC-RAS Model: No Model

Parcel Number:



WTCORSE CORPORATION  
 REMAINDER OF  
 1818.234 ACRES  
 D.B. 218, PG. 312  
 (SEE PLAT NO. 060-018)

