

173 bluffs



Map Created on 8/12/2014



Location of the mouse click



Flood Hazard Zone
(1% annual chance floodplain)

User Notes:

Disclaimer:

The online map is for use in administering the National Flood Insurance Program. It does not necessarily identify all areas subject to flooding, particularly from local drainage sources of small size. To obtain more detailed information in areas where Base Flood Elevations have been determined, users are encouraged to consult the latest Flood Profile data contained in the official flood insurance study. These studies are available online at www.msc.fema.gov.

WV Flood Tool is supported by FEMA, WV NFIP Office, and WV GIS Technical Center
(<http://www.MapWV.gov/flood>)

Flood Hazard Area:

Elevation: About 1528 feet

Location (long, lat): 78.797121 W, 39.397780 N

Location (UTM 17N): (689688, 4363235)

FEMA Issued Flood Map: 54027C0093C

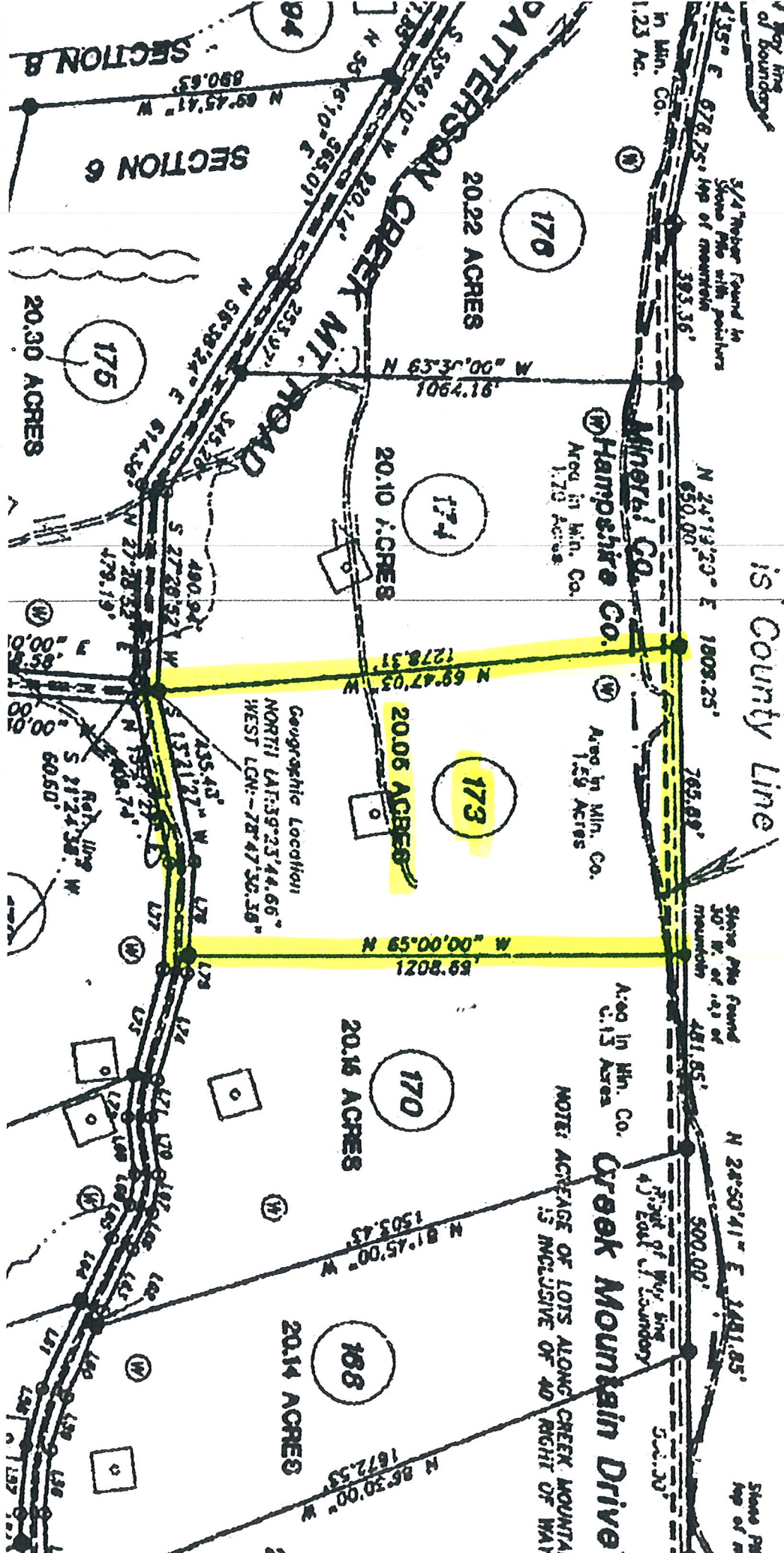
Contacts: Hampshire County

CRS Information: Hampshire County

Parcel Number:

Stocum Family Trust
DB 312 PG 182
TM 16 Parcel 05

Top of Patterson Creek Mountain
is County Line



Mc