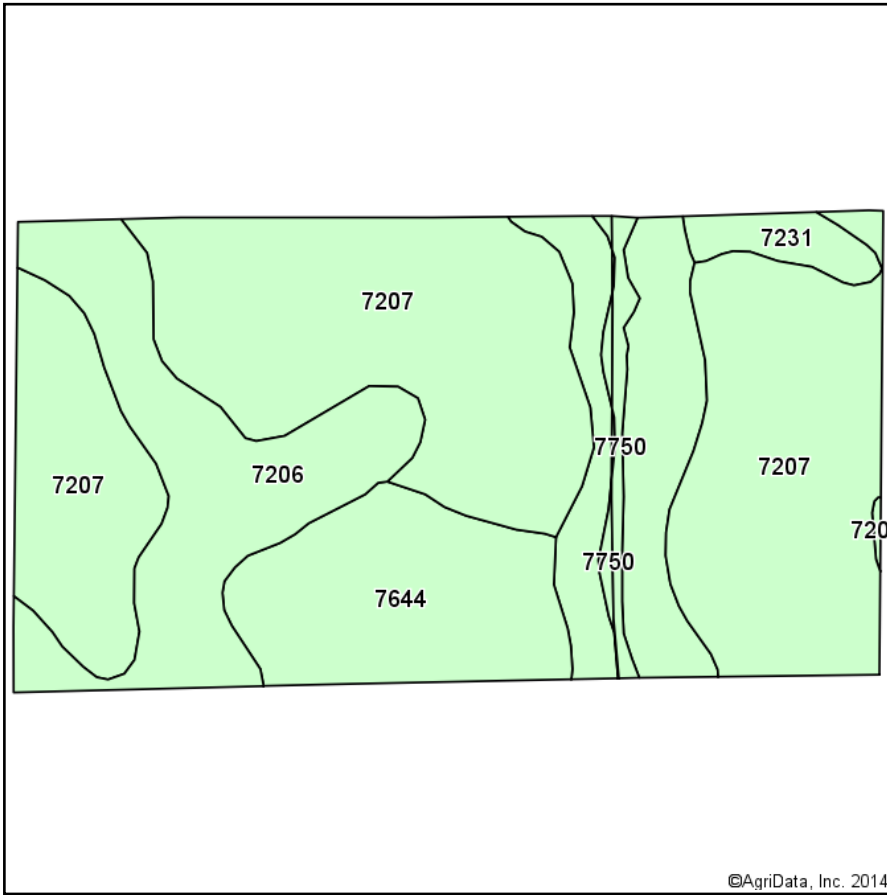
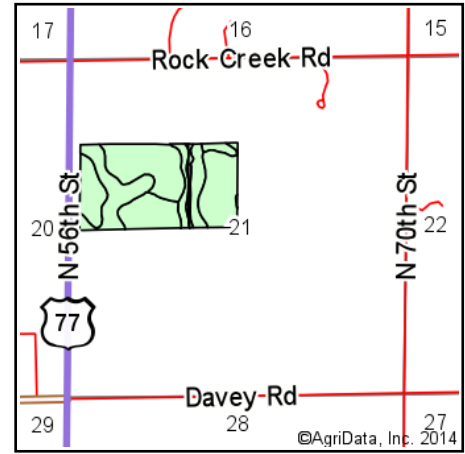


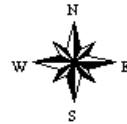
# Soil Map



Soils data provided by USDA and NRCS.



State: **Nebraska**  
 County: **Lancaster**  
 Location: **21-12N-7E**  
 Township: **Rock Creek**  
 Acres: **74.35**  
 Date: **9/7/2014**



Maps Provided By:  
  
 CUSTOMIZED ONLINE MAPPING  
 © AgriData, Inc. 2014 www.AgriDataInc.com

## Area Symbol: NE109. Soil Area Version: 18

Code	Soil Description	Acres	Percent of field	Non-Irr Class	Irr Class	SRPG	Alfalfa hay	Alfalfa hay Irrigated	Bromegrass alfalfa	Bromegrass alfalfa Irrigated	Corn	Corn Irrigated	Grain sorghum	Grain sorghum Irrigated	Soybeans	Soybeans Irrigated
7207	Aksarben silty clay loam, 6 to 11 percent slopes	40.33	54.2%	IIIe	IVe	68										
7206	Aksarben silty clay loam, 2 to 6 percent slopes	12.32	16.6%	Ile	IIIe	72										
7644	Yutan silty clay loam, 6 to 11 percent slopes, eroded	9.86	13.3%	IIIe	IVe	67	3.5	5.5	4.2	10	77	116	79	100	28	
7750	Nodaway silt loam, occasionally flooded	6.89	9.3%	IIw	IIw	74	5	6.5	5	13	94	142	90	120	38	
7231	Judson silt loam, 2 to 6 percent slopes	4.95	6.7%	Ile	IIIe	74	4.8	6.8	5	13	105	137	93	115	40	
<b>Weighted Average</b>						<b>69.5</b>	<b>1.2</b>	<b>1.8</b>	<b>1.4</b>	<b>3.4</b>	<b>25.9</b>	<b>37.7</b>	<b>25</b>	<b>32</b>	<b>9.9</b>	

Area Symbol: NE109, Soil Area Version: 18

Field borders provided by Farm Service Agency as of 5/21/2008. Aerial photography provided by Aerial Photography Field Office.